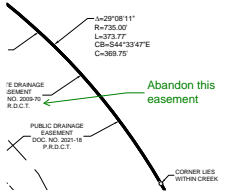


Arthur's Lane - 1st FP

DRussell (8)

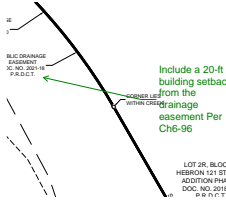
Author: DRussell

Abandon this easement



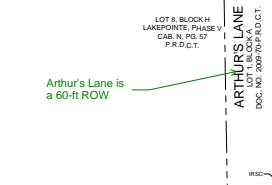
Author: DRussell

Include a 20-ft building setback from the drainage easement Per Ch6-96



Author: DRussell

Arthur's Lane is a 60-ft ROW



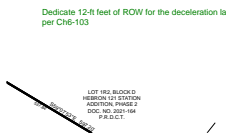
Author: DRussell

Extend mutual access and utility easements throughout Lots 1, 2, and 3

Extend mutual access and utility easements throughout Lots 1, 2, and 3

Author: DRussell

Dedicate 12-ft feet of ROW for the deceleration lane per Ch6-103



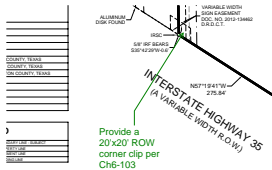
Author: DRussell

Lightly hatch the floodway

Lightly hatch the floodway

Author: DRussell

Provide a 20'x20' ROW corner clip per Ch6-103



Author: DRussell

Consider a separate page with one abandoning and the other establishing easements/lot lines

Consider a separate page with one abandoning and the other establishing easements/lot lines

jbeckham (1)

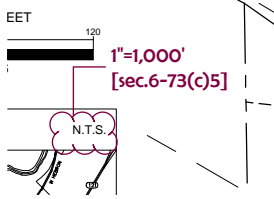
NOTARY PUBLIC in and for the STATE OF _____

Author: jbeckham

All lien holders must sign the plat [Sec.6-27]

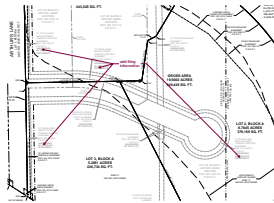
All lien holders must sign the plat [Sec.6-27]

Jon Beckham (4)



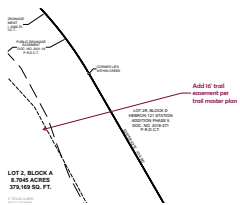
Author: Jon Beckham

1"=1,000' [sec.6-73(c)5]



Author: Jon Beckham

add filing information



Author: Jon Beckham

Add 16' trail easement per trail master plan

NOTARY PUBLIC in and for the STATE OF _____

Author: Jon Beckham

Julie Worster

Richard Luedke, City Secretary
City of Lewisville, Texas

Julie Worster