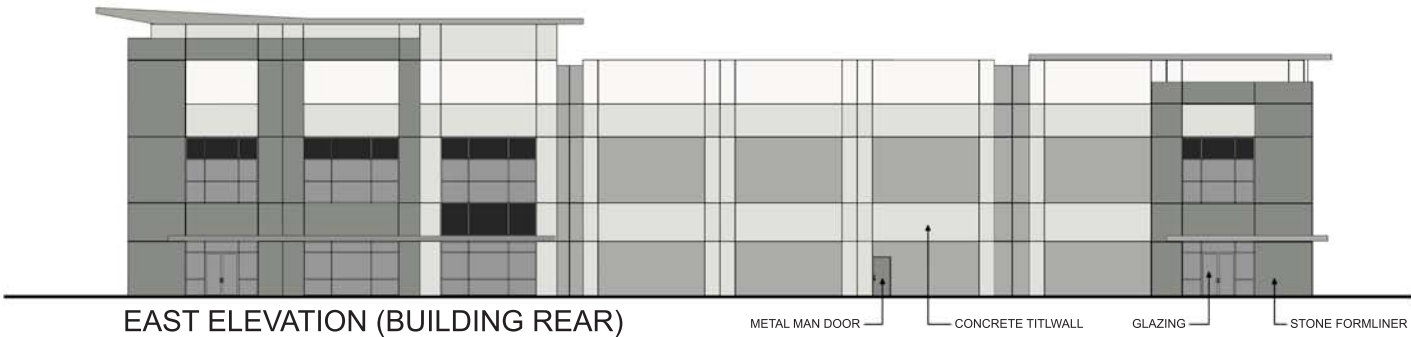
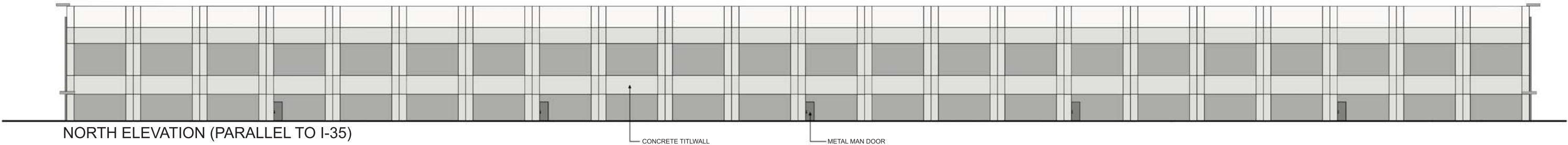
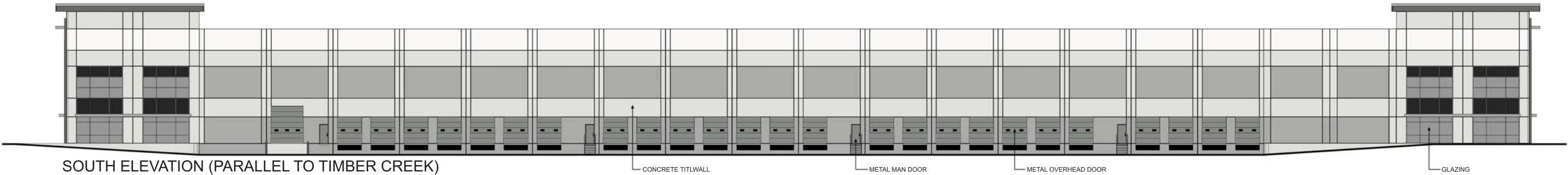
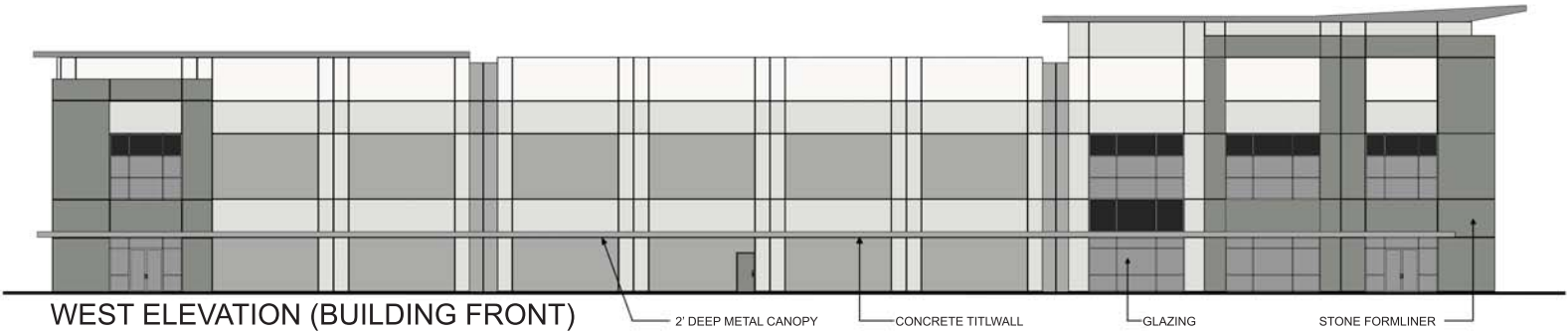


Alternative Standard Requested:
f) to allow 20% brick or stone on the front and rear elevations in lieu of the required 80% of each exterior wall to be brick or stone.
Alternative Standard Approved:
g) to allow 4 colors in lieu of the maximum of 3 colors per elevation.



WEST ELEVATION GLAZING - 1,551 SF STONE FORMLINER - 2,679 SF METAL DOORS - 24 SF PAINTED CONCRETE - 7,599 SF TOTAL - 11,853 SF	NORTH ELEVATION GLAZING - 0 SF STONE FORMLINER - 0 SF METAL DOORS - 119 SF PAINTED CONCRETE - 23,561 SF TOTAL - 23,680 SF	TOTAL ELEVATIONS GLAZING - 5,050 SF STONE FORMLINER - 5,358 SF METAL DOORS - 2,657 SF PAINTED CONCRETE - 58,162 SF TOTAL - 71,227 SF
SOUTH ELEVATION GLAZING - 1,948 SF STONE FORMLINER - 0 SF METAL DOORS - 2,490 SF PAINTED CONCRETE - 21,497 SF TOTAL - 25,935 SF	EAST ELEVATION GLAZING - 1,551 SF STONE FORMLINER - 2,679 SF METAL DOORS - 24 SF PAINTED CONCRETE - 5,505 SF TOTAL - 9,759 SF	HEIGHTS CLEAR HEIGHT - 28' - 0" PARAPET HEIGHT - 43' - 0"

1/16" 0' 5' 10' 20' 40'	
SW 7004 Snowbound Interior / Exterior Locator Number: 256-C2	SW 7067 Cityscape Interior / Exterior Locator Number: 236-C5
SW 7668 March Wind Interior / Exterior Locator Number: 292-C3	SW 7068 Grizzle Gray Interior / Exterior Locator Number: 236-C6