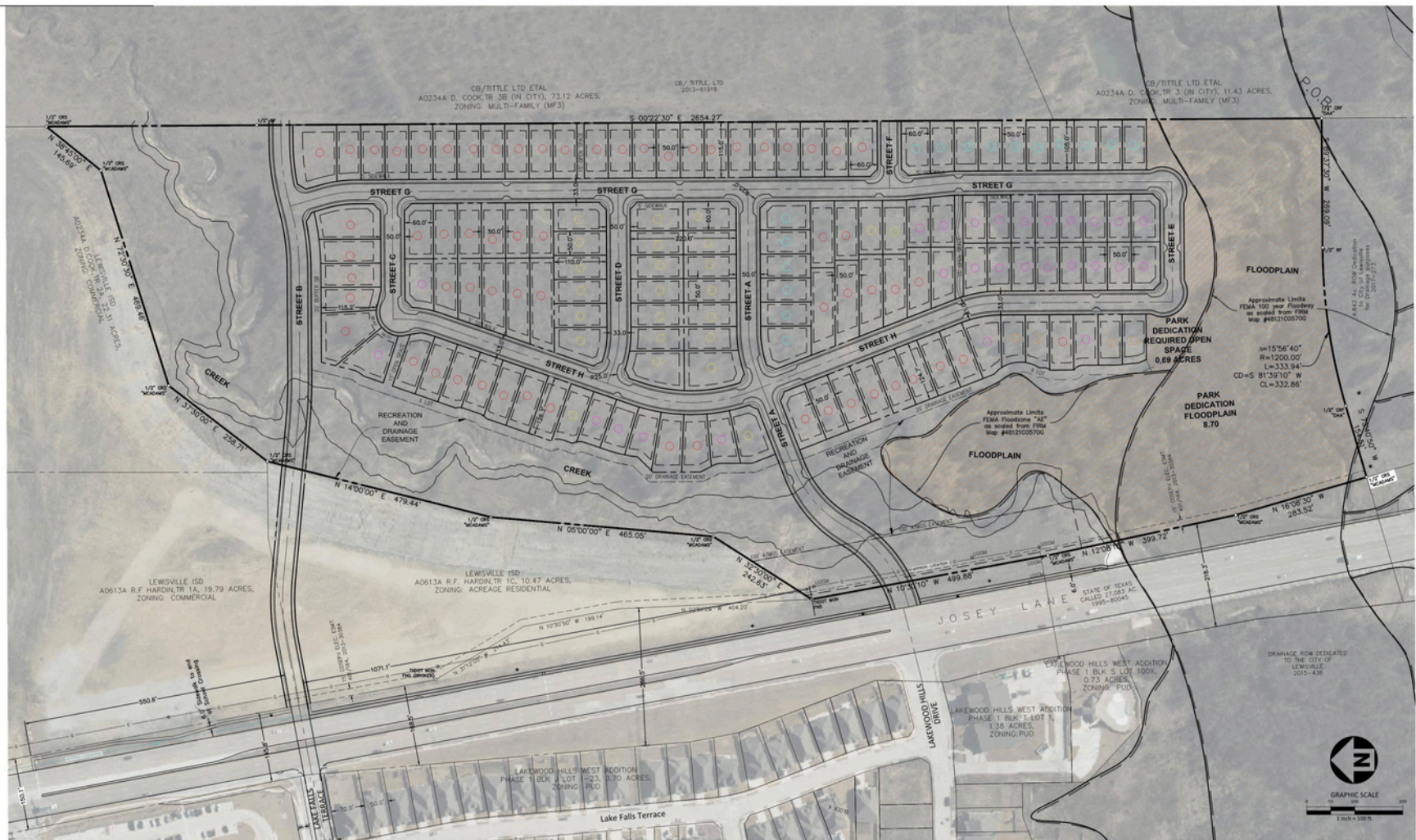


Exhibit B - Park Dedication and Concept



VICINITY MAP SCALE 1"=1000'



Parkland Dedication and Development Calculations:

- 136 Units = 4.08 acres
- 0.69 acres (Shown as Park Dedication Required Open Space) +
- 2.04 acres (of the floodplain to satisfy up to one-half (1/2) of the parkland dedication requirement which is 4.08 acres.)
- Total Parkland Dedication accepted to fulfill Sect. X.1.4: 2.73 acres
- Cash in Lieu for 1.35 acres accepted after Parkland Dedication: \$101,311
- Park Development Fee Requirement Due: \$149,600
- Remaining 6.6 acres in the floodplain will be accepted as additional parkland



Required Dedication	Proposed Dedication	Portion of Dedication Fulfilling Section X.1.4
4.08 Acres	9.39 Acres	2.73 Acres*

*Per Section X.1.4. - Jurisdictional wetlands and property in established floodplains may be used to satisfy up to one-half (1/2) of the parkland dedication requirement.



McADAMS

The John R. McAdams Company, Inc.
4400 State Highway 121, Suite 800
Lewisville, Texas 75056
phone 972.436.9712
fax 972.436.9715
TBPE: 19762 TBPLS: 10194440
www.mcadamsco.com

CLIENT

LYFE Residential
2140 Hall Johnson Road, Suite 102-106
Grapevine, Texas 76051
EMAIL: alex.dryer@lyferesidential.com
PHONE: (325)260-4873

PLANNER

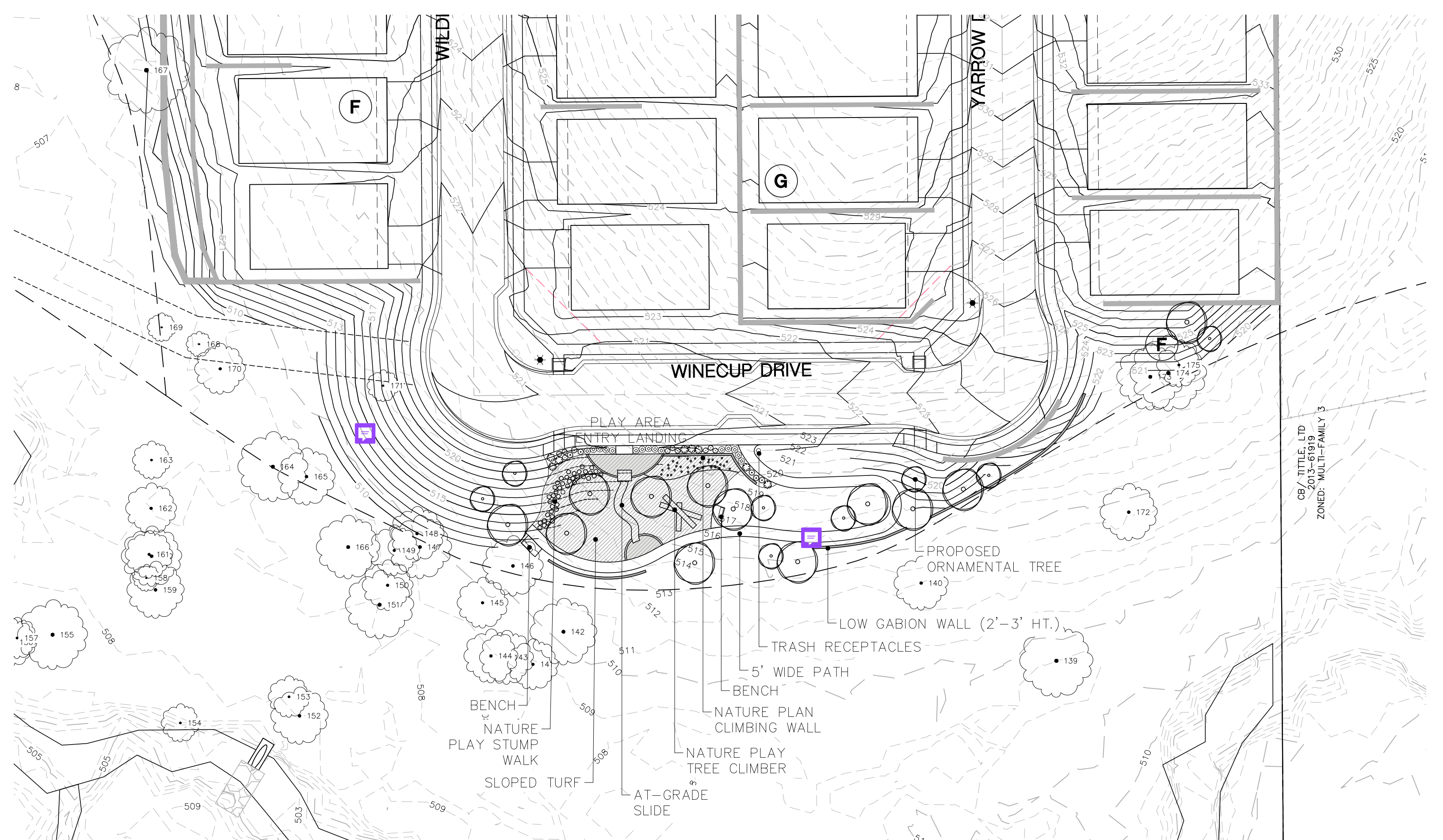
PATRICIA FANT, LAND PLANNER
4400 State Highway 121, Suite 800
Lewisville, TX 75056
EMAIL: pfant@mcadamsco.com

PARK DEDICATION PLAN JOSEY LAKE RESIDENTIAL 47,641 ACRES

R. P. HARDIN SURVEY, ABSTRACT NO. 613
E. A. COOK SURVEY, ABSTRACT NO. 234
A. A. COOK SURVEY, ABSTRACT NO. 235
B. SCHROEDER SURVEY, ABSTRACT NO. 1209
CITY OF LEWISVILLE, DENTON COUNTY, TEXAS

PROJECT INFORMATION

PROJECT NO. LYF 23002
FILENAME LYF 23002 46.7 AC. ZONING BASE
CHECKED BY PF
DRAWN BY AB
SCALE 1"=100'
DATE 12.11.2023



CB/TITTLE, LTD
 2013-61919
 ZONED: MULTI-FAMILY 3