

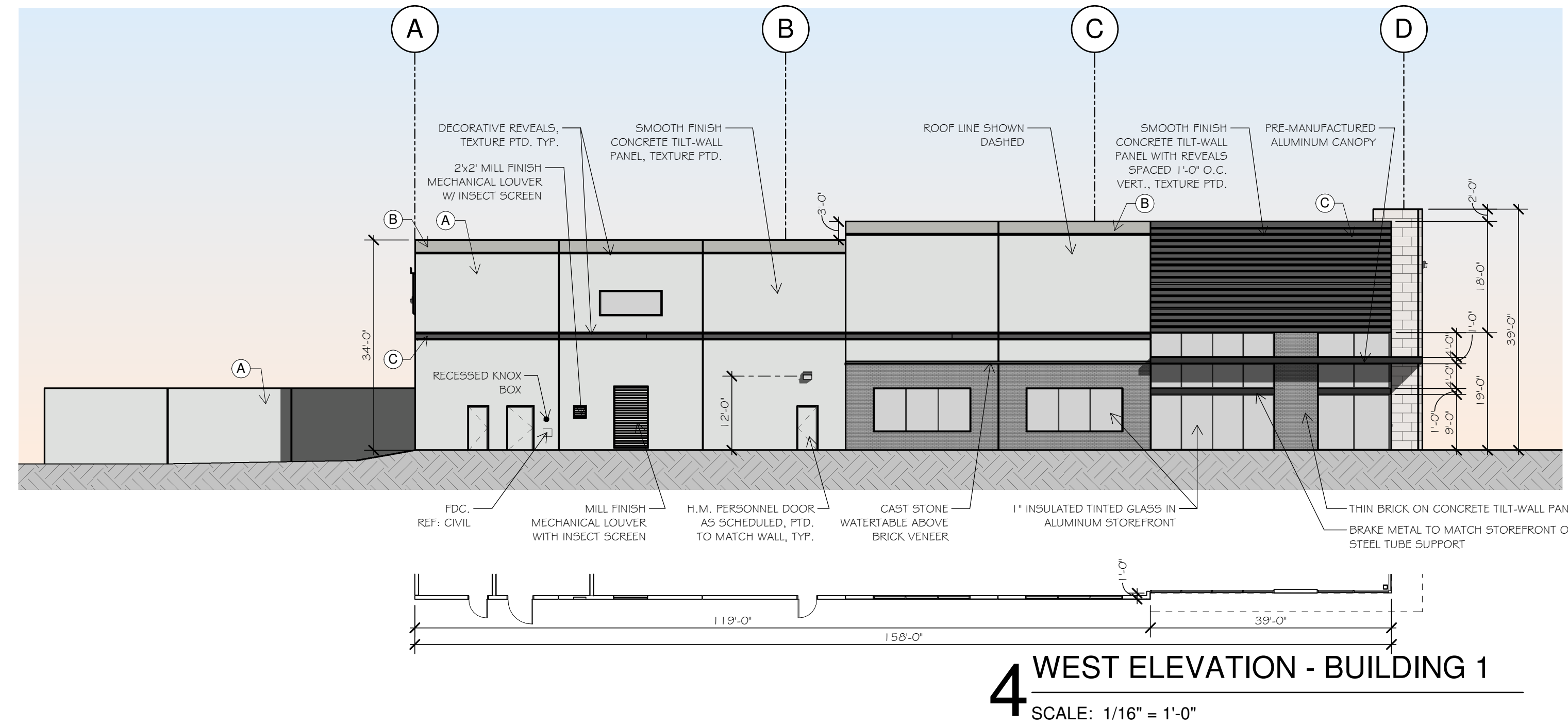
Requested Alternative Standard: To reduce the required minimum brick or stone facade requirements between the two buildings, representing an aggregate 22,033 square feet, to an aggregate 8,152 square feet, a 63% reduction.

BUILDING 1 | FACADE MATERIAL CALCULATIONS

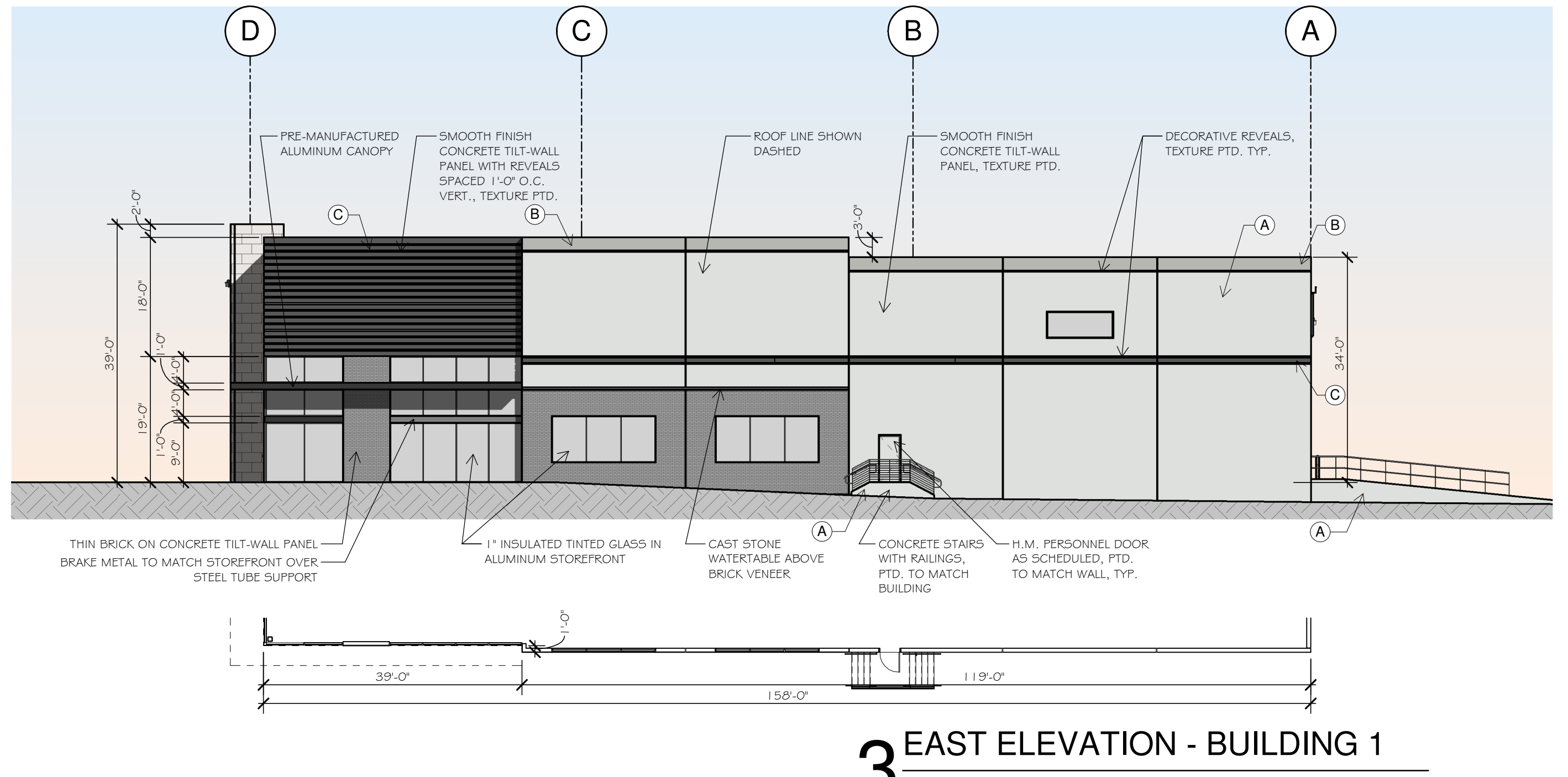
NORTH ELEVATION			SOUTH ELEVATION			EAST ELEVATION			WEST ELEVATION		
MATERIAL	AREA (SF)	% OF NET FACADE AREA	MATERIAL	AREA (SF)	% OF NET FACADE AREA	MATERIAL	AREA (SF)	% OF NET FACADE AREA	MATERIAL	AREA (SF)	% OF NET FACADE AREA
GROSS FACADE AREA	14,382 SF		GROSS FACADE AREA	15,633 SF		GROSS FACADE AREA	5,838 SF		GROSS FACADE AREA	5,838 SF	
DOORS, WINDOWS, & MECHANICAL	2,989 SF		DOORS, WINDOWS, & MECHANICAL	4,006 SF		DOORS, WINDOWS, & MECHANICAL	858 SF		DOORS, WINDOWS, & MECHANICAL	972 SF	
NET FACADE AREA	11,393 SF		NET FACADE AREA	11,627 SF		NET FACADE AREA	4,980 SF		NET FACADE AREA	4,866 SF	
BRICK/STONE PROVIDED	0 SF	0%	BRICK/STONE PROVIDED	3,287 SF	28.1%	BRICK/STONE PROVIDED	794 SF	15.9%	BRICK/STONE PROVIDED	794 SF	16.3%
BRICK/STONE REQUIRED	1,139 SF	10%	BRICK/STONE REQUIRED	1,744 SF	15%	BRICK/STONE REQUIRED	498 SF	10%	BRICK/STONE REQUIRED	487 SF	10%
CONCRETE - TEXTURE PAINTED	11,393 SF	100%	CONCRETE - TEXTURE PAINTED	4,259 SF	36.6%	CONCRETE - TEXTURE PAINTED	3,440 SF	69.1%	CONCRETE - TEXTURE PAINTED	3,326 SF	68.4%
CONCRETE - WITH REVEALS	0 SF	0%	CONCRETE - WITH REVEALS	3,898 SF	33.6%	CONCRETE - WITH REVEALS	702 SF	14.1%	CONCRETE - WITH REVEALS	702 SF	14.4%
METAL	0 SF	0%	METAL	203 SF	1.7%	METAL	44 SF	0.9%	METAL	44 SF	0.9%
CANOPY LENGTH - 203'-4" (TOTAL) FACADE LENGTH - 428'-0" RATIO - 47.5%			CANOPY LENGTH - 203'-4" (TOTAL) FACADE LENGTH - 428'-0" RATIO - 47.5%			CANOPY LENGTH - 44'-0" (TOTAL) FACADE LENGTH - 158'-0" RATIO - 27.8%			CANOPY LENGTH - 44'-0" (TOTAL) FACADE LENGTH - 158'-0" RATIO - 27.8%		

PAINT SCHEDULE

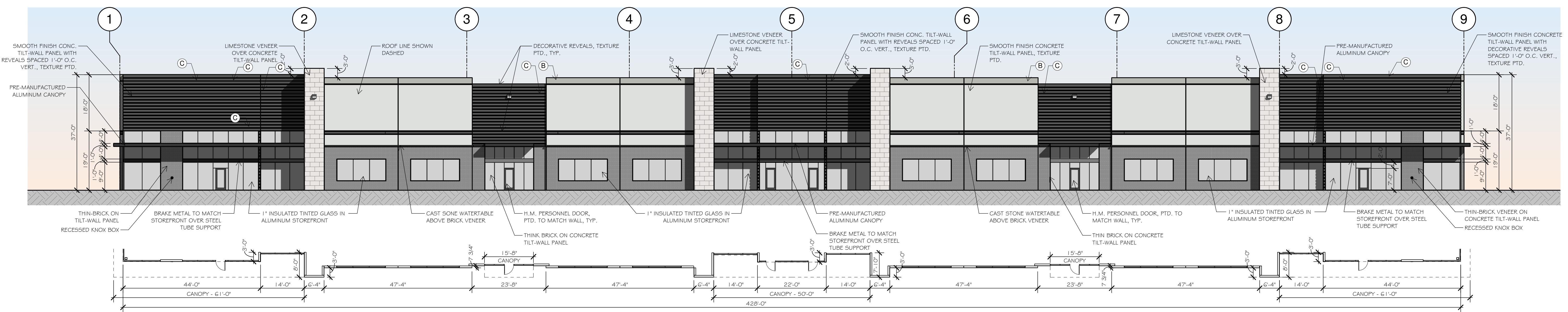
(A)	BASE PAINT COLOR - SW 7656 RHINESTONE
(B)	ACCENT PAINT COLOR - SW 7658 GRAY CLOUDS
(C)	ACCENT PAINT COLOR - SW 7674 PEPPER CORN



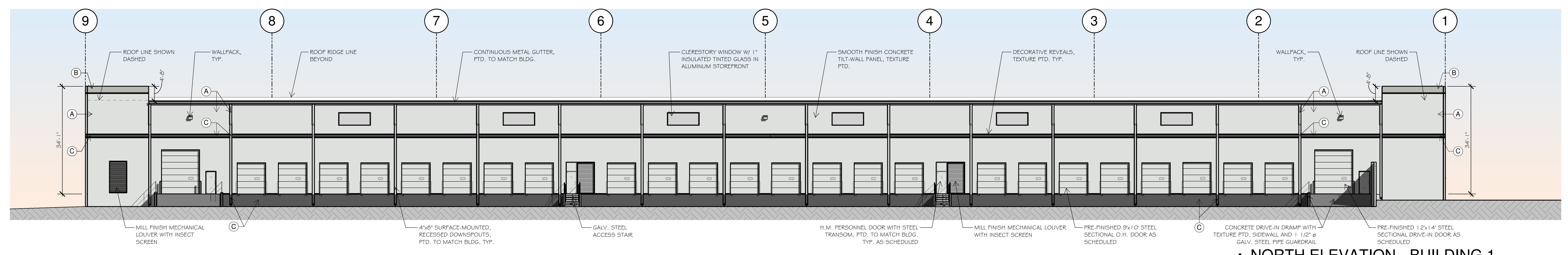
4 WEST ELEVATION - BUILDING 1
SCALE: 1/16" = 1'-0"



3 EAST ELEVATION - BUILDING 1
SCALE: 1/16" = 1'-0"



2 SOUTH ELEVATION - BUILDING 1
SCALE: 1/16" = 1'-0"



1 NORTH ELEVATION - BUILDING 1
SCALE: 1/16" = 1'-0"

11/13/2024 10:48:21 AM C:\Users\pdgs\Documents\PDG LOCAL PROJECT FILES\2422_ARCH CENTRAL_BLDG 1_R23_PDG-SF\1111.rvt © 2024 THIS DOCUMENT AND THE DESIGNS CONTAINED THEREIN REMAINS THE PROPERTY OF PROSS DESIGN GROUP, INC. AS AN INSTRUMENT OF PROFESSIONAL SERVICE. IT IS NOT TO BE USED IN WHOLE OR IN PART FOR ANY OTHER PURPOSE WITHOUT THE WRITTEN PERMISSION OF PROSS DESIGN GROUP.

drawn: SF checked: ROBERT PROSS date: 11/18/2024

DATE

#

DESCRIPTION

ARCHITECT

PROSS DESIGN GROUP, INC.

11/18/2024

CH REALTY X-GAP
DFW, OAKBEND, L.P.

pross design group, incorporated
25310 Harvest Hill Road, Suite 100, Dallas, Texas 75250, 972/756-1400

OAKBEND INDUSTRIAL
420 OAKBEND DR
LEWISVILLE, TEXAS

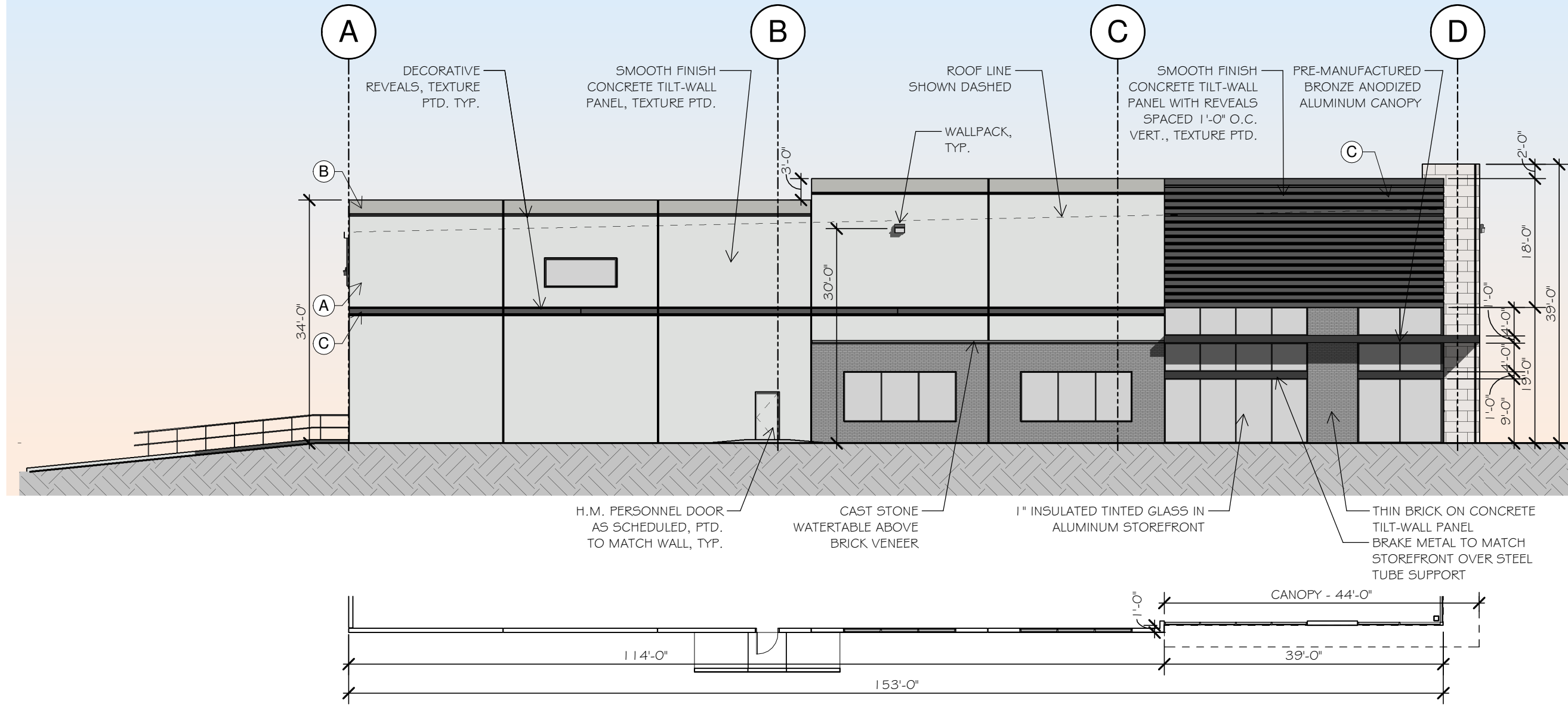
job no 2422
sheet A3.0

BUILDING 2 | FACADE MATERIAL CALCULATIONS

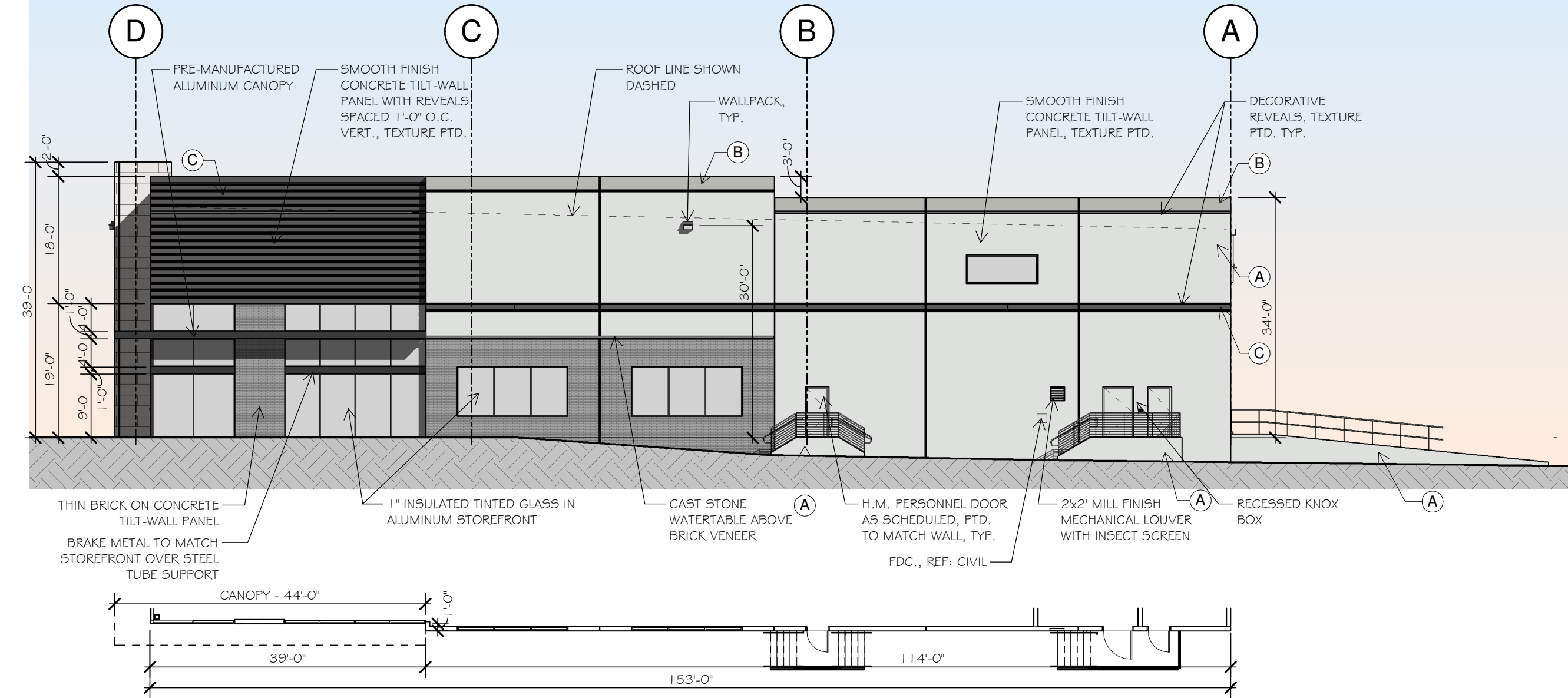
NORTH ELEVATION			SOUTH ELEVATION			EAST ELEVATION			WEST ELEVATION		
MATERIAL	AREA (SF)	% OF NET FACADE AREA	MATERIAL	AREA (SF)	% OF NET FACADE AREA	MATERIAL	AREA (SF)	% OF NET FACADE AREA	MATERIAL	AREA (SF)	% OF NET FACADE AREA
GROSS FACADE AREA	8,282 SF		GROSS FACADE AREA	9,005 SF		GROSS FACADE AREA	5,669 SF		GROSS FACADE AREA	5,668 SF	
DOORS, WINDOWS, & MECHANICAL	1,669 SF		DOORS, WINDOWS, & MECHANICAL	2,471 SF		DOORS, WINDOWS, & MECHANICAL	917 SF		DOORS, WINDOWS, & MECHANICAL	858 SF	
NET FACADE AREA	6,613 SF		NET FACADE AREA	6,534 SF		NET FACADE AREA	4,751 SF		NET FACADE AREA	4,810 SF	
BRICK/STONE PROVIDED	0 SF	0%	BRICK/STONE PROVIDED	1,743 SF	26.7%	BRICK/STONE PROVIDED	794 SF	16.7%	BRICK/STONE PROVIDED	793 SF	16.5%
BRICK/STONE REQUIRED	5,290 SF	80%	BRICK/STONE REQUIRED	5,227 SF	80%	BRICK/STONE REQUIRED	3,800 SF	80%	BRICK/STONE REQUIRED	3,848 SF	80%
CONCRETE - TEXTURE PAINTED	6,613 SF	100%	CONCRETE - TEXTURE PAINTED	2,117 SF	32.4%	CONCRETE - TEXTURE PAINTED	3,211 SF	67.6%	CONCRETE - TEXTURE PAINTED	3,271 SF	68%
CONCRETE - WITH REVEALS	0 SF	0%	CONCRETE - WITH REVEALS	2,536 SF	38.8%	CONCRETE - WITH REVEALS	702 SF	14.8%	CONCRETE - WITH REVEALS	702 SF	14.6%
METAL	0 SF	0%	METAL	138 SF	2.1%	METAL	44 SF	.9%	METAL	44 SF	.9%
CANOPY LENGTH - 137'-9" (TOTAL) FACADE LENGTH - 245'-0" RATIO - 56.2%			CANOPY LENGTH - 137'-9" (TOTAL) FACADE LENGTH - 245'-0" RATIO - 56.2%			CANOPY LENGTH - 44'-0" (TOTAL) FACADE LENGTH - 153'-0" RATIO - 28.8%			CANOPY LENGTH - 44'-0" (TOTAL) FACADE LENGTH - 153'-0" RATIO - 28.8%		

PAINT SCHEDULE

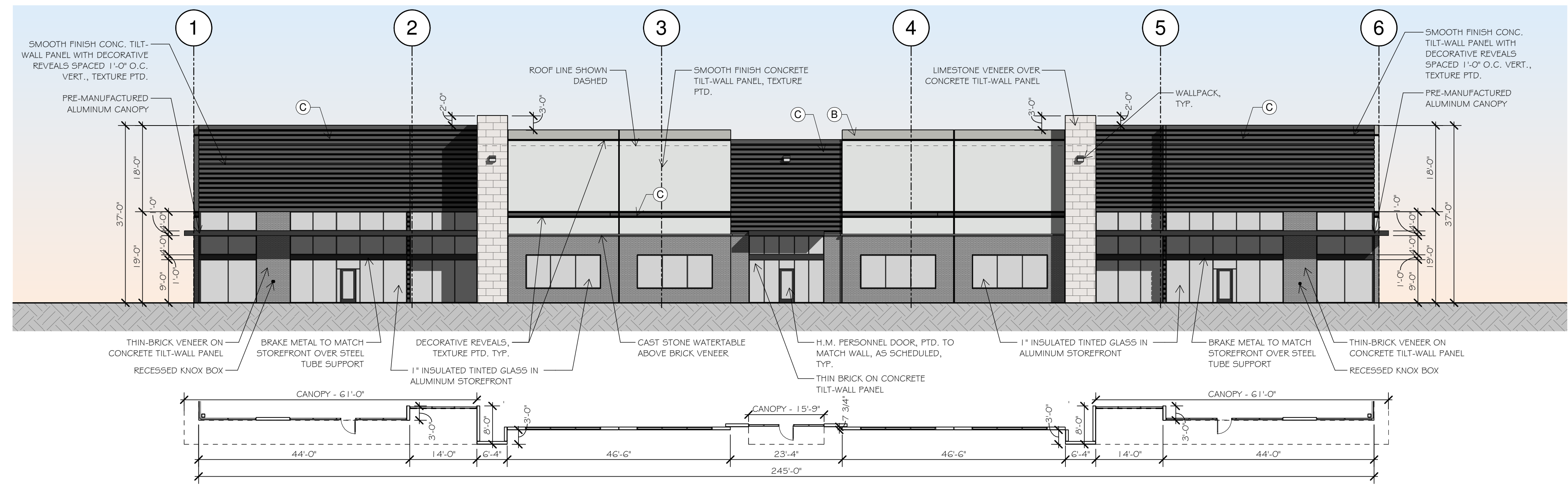
(A)	BASE PAINT COLOR - SW 7656 RHINESTONE
(B)	ACCENT PAINT COLOR - SW 7658 GRAY CLOUDS
(C)	ACCENT PAINT COLOR - SW 7674 PEPPERCORN



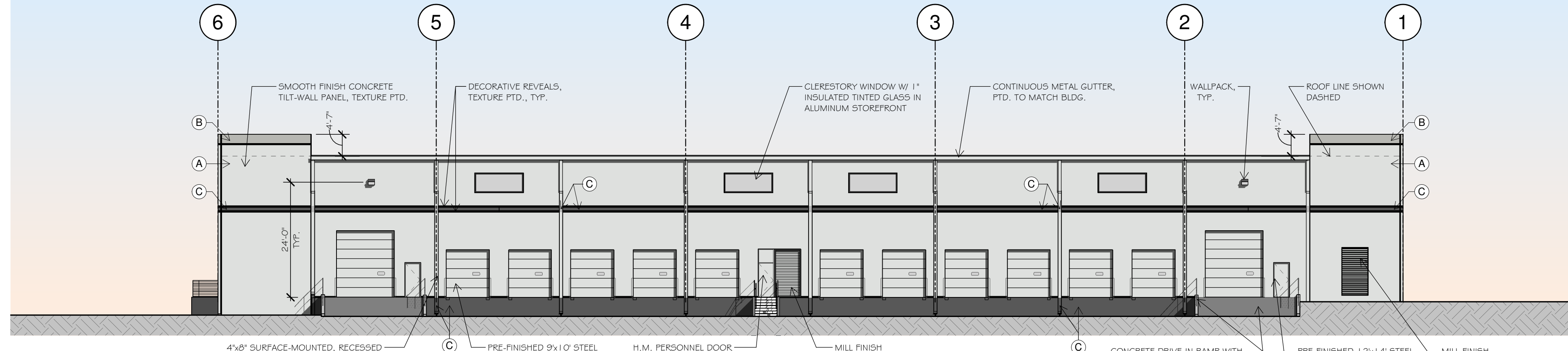
4 WEST ELEVATION - BUILDING 2
SCALE: 1/16" = 1'-0"



3 EAST ELEVATION - BUILDING 2
SCALE: 1/16" = 1'-0"



2 SOUTH ELEVATION - BUILDING 2
SCALE: 1/16" = 1'-0"



1 NORTH ELEVATION - BUILDING 2
SCALE: 1/16" = 1'-0"

11/13/2024 10:50:31 AM C:\Users\pdgs\Documents\PDG LOCAL PROJECT FILES\2422_ARCH CENTRAL_BLDG 1_R23_PDG-SFrizzell.rvt © 2024 THIS DOCUMENT AND THE DESIGNS CONTAINED THEREIN REMAINS THE PROPERTY OF PROSS DESIGN GROUP, INC. AS AN INSTRUMENT OF PROFESSIONAL SERVICE. IT IS NOT TO BE USED IN WHOLE OR IN PART FOR ANY OTHER PURPOSE WITHOUT THE WRITTEN PERMISSION OF PROSS DESIGN GROUP.

drawn: SF
checked: ROBERT PROSS
date: 11/18/2024

DESCRIPTION

#

DATE

11/18/2024

CH REALTY X-GAP
DFW, OAKBEND, L.P.

pross design group, incorporated
25310 Harvest Hill Road, Suite 100, Dallas, Texas 75250, 972/758-1400

OAKBEND INDUSTRIAL
420 OAKBEND DR
LEWISVILLE, TEXAS

job no 2422
sheet A3.1