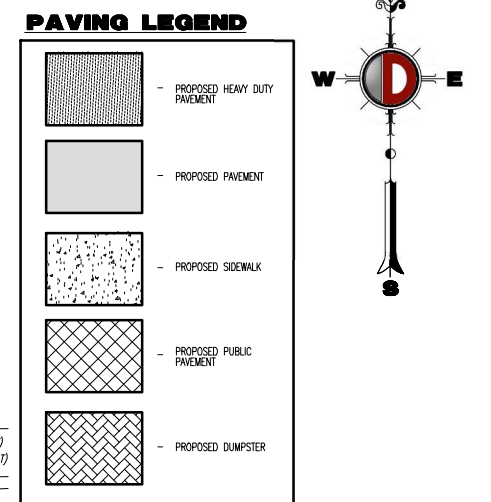




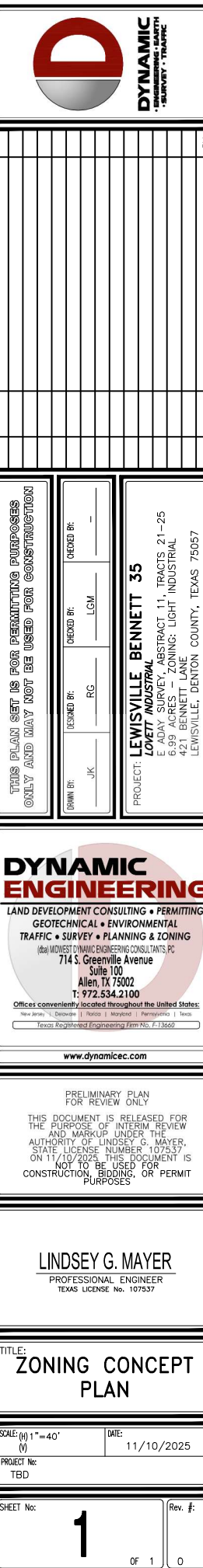
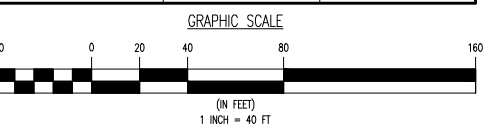
NOTE:
1. THE NORTHERN WEST BOUND LANE ALONG BENNETT WILL BE STRIPED TO A RIGHT TURN LANE ONLY DURING THE ENGINEERING SITE PLAN PROCESS.

CIVIL ENGINEER
DYNAMIC ENGINEERING CONSULTANTS, PC
LINDSEY G. MAYER, PE
714 S. GREENVILLE AVENUE, SUITE 100
ALLEN, TX 75002
T: 972-534-2100
EMAIL: [REDACTED]

DEVELOPER
JAMES YU
LOVETT INDUSTRIAL
3811 TURTLE CREEK BOULEVARD, SUITE 1050
DALLAS, TEXAS 75219
EMAIL: [REDACTED]



SITE DATA TABLE		
ZONING	REQUIRED	PROVIDED
ZONING:	AGRICULTURAL, OPEN SPACE / LIGHT INDUSTRIAL	
D ZONING:	LIGHT INDUSTRIAL	
D USE:	WAREHOUSE, DISTRIBUTION OR MANUFACTURING	
GENERAL	REQUIRED	PROVIDED
EASE:	-	8,235 ACRES
AREA:	-	29,636 SF
HEIGHT:	69 FT (MAX.)	40 FT
PERACE:	N/A	2,976 ACRES (36.14%)
AREA RATIO:	-	0.360
(1) STALLS PER 2,000 SF:	65	132 STALLS
MINIMUM SPACES:	5	6
AREA OF PARKING LOT:	-	25,562 SF
LOADING AREA:	-	-
LANDSCAPE	REQUIRED	PROVIDED
BUFFER (BENNETT LN):	50 FT	50 FT
BUFFER (YATES ST):	50 FT	50 FT
SEPER:	NONE	16 FT
AGE AREA:	7,935 SF	20,187 SF
LANDSCAPED AREA:	3,126 SF	74,983 SF (1,721 AC.)
PAVED AREA (EXCLUDING BUFFERS)	3,126 SF	21,885 SF (0.502 AC.)
BUILDING SETBACK	REQUIRED	PROVIDED
BENNETT LN:	25 FT	25 FT
YATES ST:	15 FT	25 FT
	NONE	NONE



A201

11/4/2025 3:29:35 PM Autodesk Docs/25.010 Louisville Bennett 30/25.010_DDS_Louisville Bennett 35_Pkg_Building 2.rvt

INTERIOR ELEVATION MATERIALS LEGEND

PAINT

P-1 - WHITE
P-2 - LIGHT GRAY
P-3 - MEDIUM GRAY
P-4 - DARK GRAY

FORMLINER

FL-1 - STACKED WOOD
FORMLINER (PAINT P-3)

STONE VENEER

SV-1 - STACKED TEXAS
STONE VENEER (LIGHT &
MEDIUM GRAY)
ALT. CONCRETE STONE
FORMLINER

STUCCO PARAPET CAP

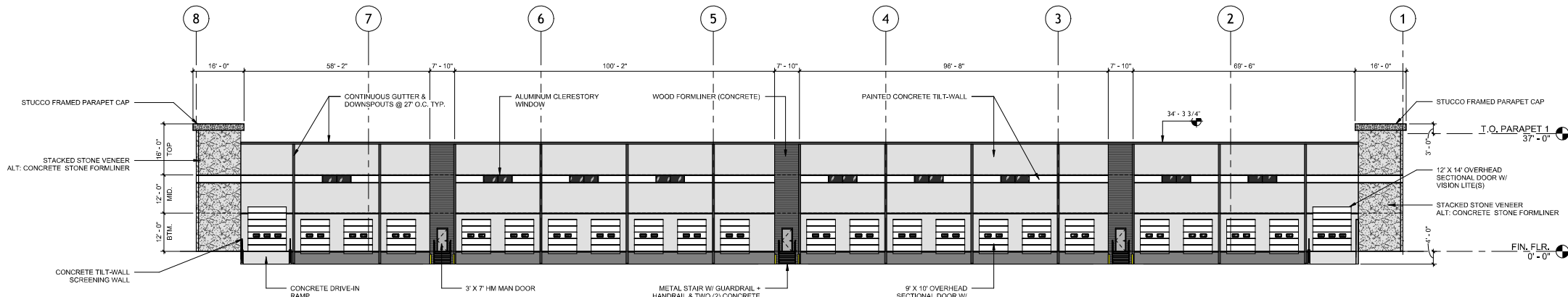
ST-1 - FRAMED STUCCO
PARAPET CAP (PAINT P-4)

CURTAINWALL / STOREFRONT

SF-1 - ANODIZED FINISH -
MATTE BLACK

EXTERIOR GLAZING

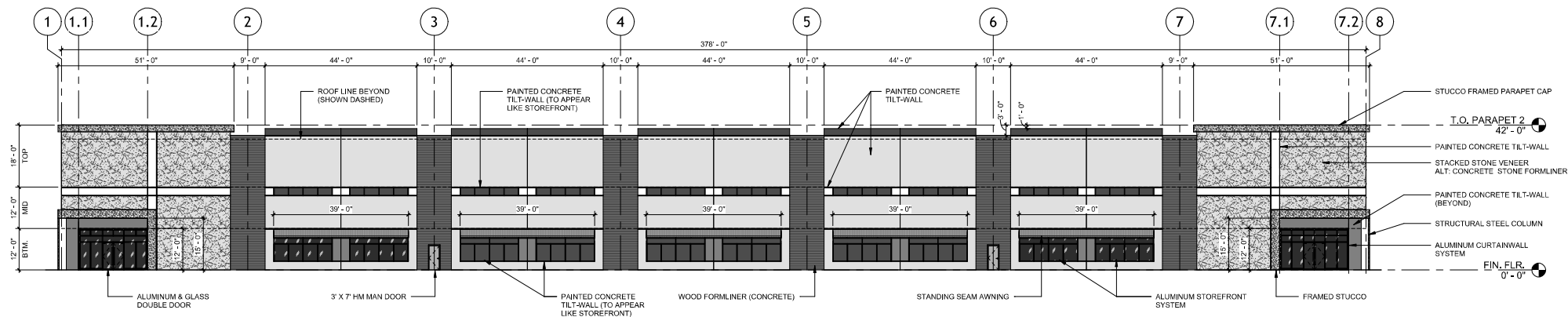
GL-1 - EXTERIOR VISION
GLAZING



2 WEST ELEVATION (TERTIARY)

WEST ELEVATION MATERIAL CALCULATIONS

TOTAL SQUARE FOOTAGE: 14,529 SF
STONE / MASONRY: 994 SF (7%)
CONCRETE: 10,941 SF
DOORS: 2,300 SF
STOREFRONT: 203 SF
STUCCO: 64 SF



1 EAST ELEVATION (SECONDARY)

EAST ELEVATION MATERIAL CALCULATIONS

TOTAL SQUARE FOOTAGE: 15,519 SF
STONE / MASONRY: 2,600 SF (17%)
CONCRETE: 11,014 SF
DOORS: 49 SF
STOREFRONT: 945 SF
STUCCO: 422 SF
STANDING SEAM METAL AWNING: 489 SF

OVERALL BUILDING LENGTH: 378' - 0"
OVERALL CANOPY LENGTH: 195' - 0" (52%)



Louisville Bennett 35 - Building 2

Bennett St & Yates Ln

Lovett Industrial

PRELIMINARY
FOR INTERIM REVIEW ONLY










THESE DOCUMENTS ARE FOR INTERIM REVIEW
AND NOT INTENDED FOR REGULATORY
APPROVAL, PERMIT, BIDDING OR
CONSTRUCTION PURPOSES. THEY WERE
PREPARED BY OR UNDER THE SUPERVISION OF:

ARCHITECT: Whys Chds
ARCH. REG. NO.: XXXXXX
DATE: MAY 23, 2025

REVISIONS

NO. DATE DESCRIPTION

INTERIOR ELEVATION MATERIALS LEGEND

PAINT		FORMLINER		STONE VENEER		STUCCO PARAPET CAP		CURTAINWALL / STOREFRONT		EXTERIOR GLAZING			
	P-1 - WHITE		P-4 - DARK GRAY		FL-1 - STACKED WOOD FORMLINER (PAINT P-3)		SV-1 - STACKED TEXAS STONE VENEER (LIGHT & MEDIUM GRAY) ALT: CONCRETE STONE FORMLINER		ST-1 - FRAMED STUCCO PARAPET CAP (PAINT P-4)		SF-1 - ANODIZED FINISH - MATTE BLACK		GL-1 - EXTERIOR VISION GLAZING
	P-2 - LIGHT GRAY												
	P-3 - MEDIUM GRAY												

