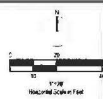


Note: Initial Location of a second automobile repair use overlapped with a automobile sales and leasing use is shown in yellow below.

LOT 10  
FAIRWAY BUSINESS PARK  
CASE W. 25.0X1.905  
PARCEL NO. 215219  
BRAZOS ELECTRIC POWER  
CONSUMERS INC.  
INSTRUMENT NO. 99-082271  
DISTRICT  
ZONING LI



BUILDING DATA					
BUILDING NO.	DEPTH (FT)	WIDTH (FT)	# OF STORIES	# OF COLUMNS	SECTORS
206	1	1	1	1	1

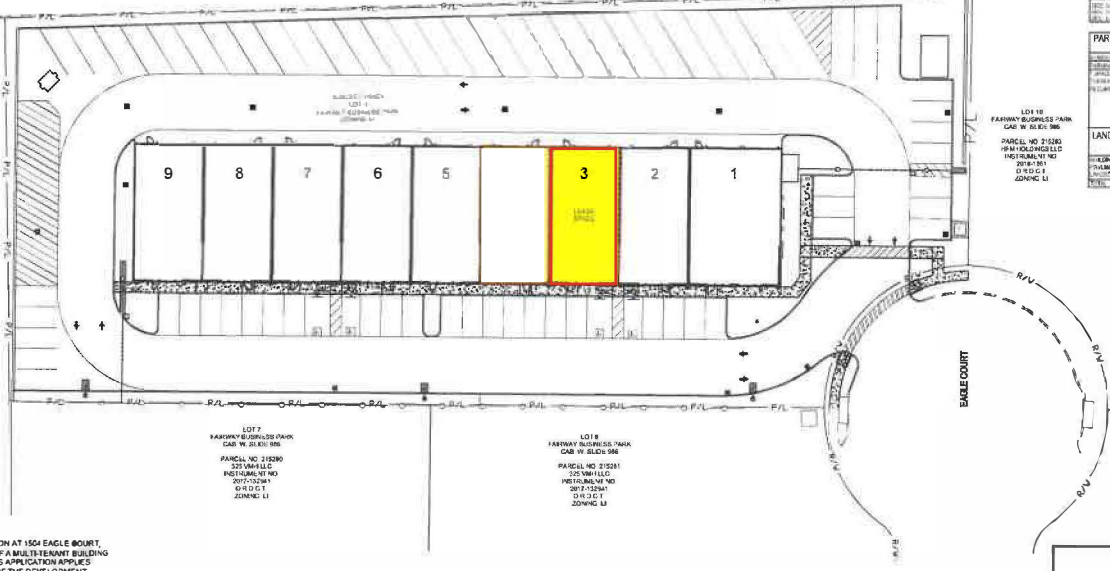
BUILDING SETBACKS	
TYPE	SETBACK (FEET)
FRONT YARD COURTYARD	5.0
FRONT YARD	5.0
REAR YARD	5.0
SIDE YARD	5.0
REAR COURTYARD	5.0

PARKING SETBACKS	
TYPE	SETBACK (FEET)
FRONT YARD	5.0
REAR YARD	5.0
SIDE YARD	5.0
REAR COURTYARD	5.0

LANDSCAPE SETBACKS	
TYPE	SETBACK (FEET)
FRONT YARD	5.0
REAR YARD	5.0
SIDE YARD	5.0
REAR COURTYARD	5.0

PARKING SPACES	
TYPE	NUMBER
STANDARD	10
COMPACT	10
TOTAL	20

LAND USE DATA	
TYPE	AREA (SQ. FT.)
RESIDENTIAL	10,000
COMMERCIAL	10,000
TOTAL	20,000



ALL TRADES INDUSTRIAL PROPERTIES  
1504 EAGLE COURT  
LOT 9, BLOCK A OF FAIRWAY BUSINESS PARK

**PROJECT DESCRIPTION**

THIS IS A SPECIAL USE PERMIT FOR A LOCATION AT 1504 EAGLE COURT, SUITE 9. THIS IS AN EXISTING DEVELOPMENT OF A MULTITENANT BUILDING BY ALL TRADES INDUSTRIAL PROPERTIES. THIS APPLICATION APPLIES ONLY TO THE INITIAL USAGE OF SUITE 3 & 4 OF THE DEVELOPMENT.

**PROPERTY OWNER**

APR EAGLE COURT, LLC  
1504 EAGLE COURT, SUITE 9  
LEWISVILLE, TX 75067  
CONTACT: TED REA (562.356.8723)

**LIBERTY HAIL ZONING PLAN SPECIAL USE PERMIT**

FAIRWAY BUSINESS PARK  
LOT 9, BLOCK A  
1.97 ACRES  
ZONING LI  
AUTOMOBILE REPAIR (MINOR)