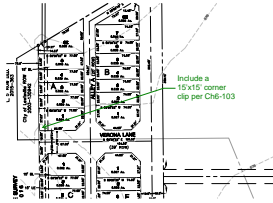


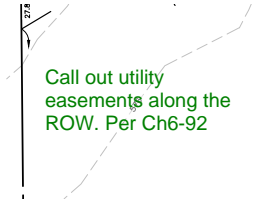
Lakeside Crossing 1st PP _ Summary

DRussell (18)



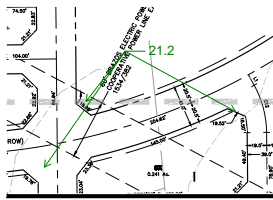
Author: DRussell

Include a 15'x15' corner clip per Ch6-103



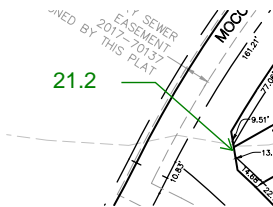
Author: DRussell

Call out utility easements along the ROW. Per Ch6-92



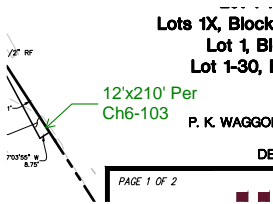
Author: DRussell

21.2



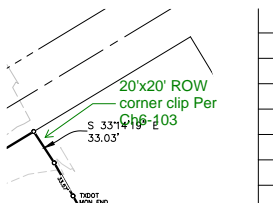
Author: DRussell

21.2



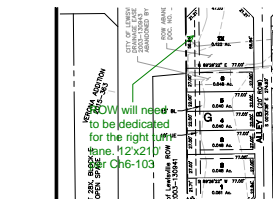
Author: DRussell

12'x210' Per Ch6-103



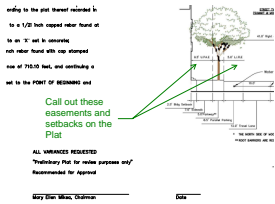
Author: DRussell

20'x20' ROW corner clip Per Ch6-103



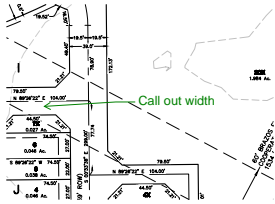
Author: DRussell

ROW will need to be dedicated for the right turn lane. 12'x210' per Ch6-103



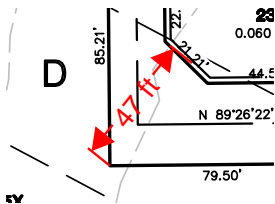
Author: DRussell

Call out these easements and setbacks on the Plat



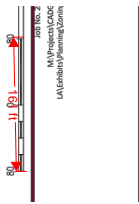
Author: DRussell

Call out width



Author: DRussell

47 ft



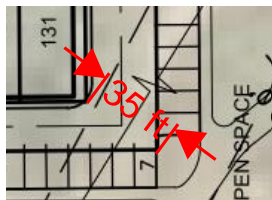
Author: DRussell

161 ft



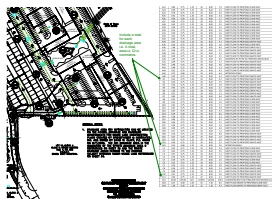
Author: DRussell

23 ft



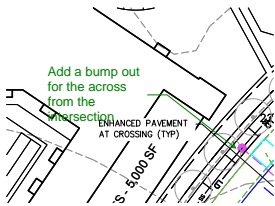
Author: DRussell

35 ft



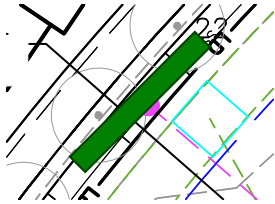
Author: DRussell

Include a total for each drainage area i.e. A total, area=x, Q=x, comments

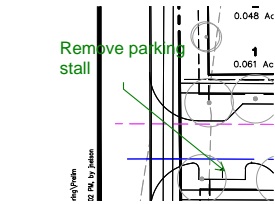


Author: DRussell

Add a bump out for the across from the intersection

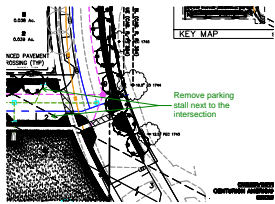


Author: DRussell



Author: DRussell

Remove parking stall



Author: DRussell

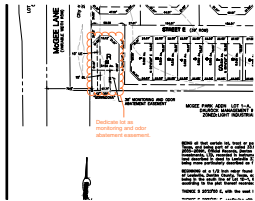
Remove parking stall next to the intersection

kchearon (3)

Author: kchearon

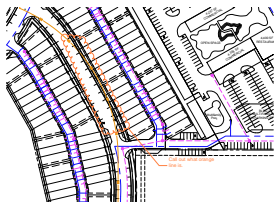
Will have additional comments on ESP.

Will have additional comments on ESP.



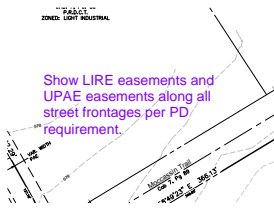
Author: kchearon

Dedicate lot as monitoring and odor abatement easement.



Author: kchearon

Call out what orange line is.



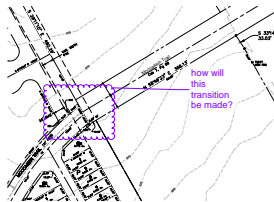
Author: mberry

Show LIRE easements and UPAE easements along all street frontages per PD requirement.



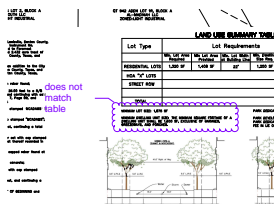
Author: mberry

label access easement



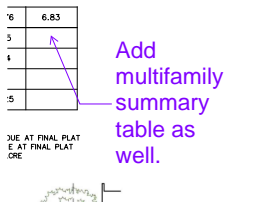
Author: mberry

how will this transition be made?



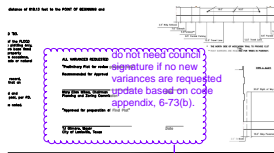
Author: mberry

does not match table



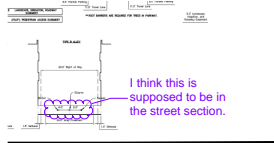
Author: mberry

Add multifamily summary table as well.



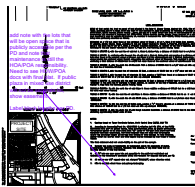
Author: mberry

do not need council signature if no new variances are requested update based on code appendix, 6-73(b).



Author: mberry

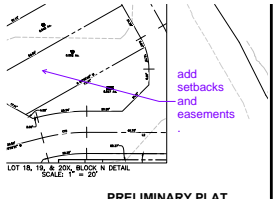
I think this is supposed to be in the street section.



Author: mberry

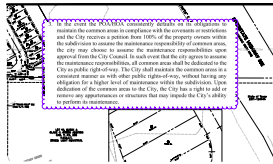
add note with the lots that will be open space that is publicly accessible per the PD and note that maintenance is still the HOA/POA responsibility. Need to see HOW/POA docs with final plat. If public plaza in mixed use district will not be separate lot, show easement.

Label block lengths per PD.

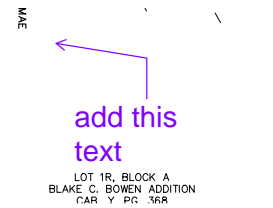


Author: mberry

add setbacks and easements.

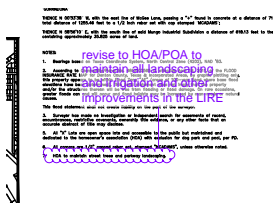


Author: mberry



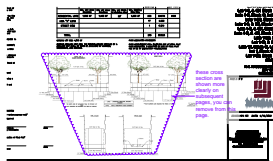
Author: mberry

add this text



Author: mberry

revise to HOA/POA to maintain all landscaping and irrigation and other improvements in the LIRE



Author: mberry

these cross section are shown more clearly on subsequent pages, you can remove from this page.



Author: mberry

delete page



Item	Notes	Rev	Yr	Stat
1	...	None	None	None
2	...	None	None	None
3	...	None	None	None
4	...	None	None	None
5	...	None	None	None
6	...	None	None	None
7	...	None	None	None
8	...	None	None	None
9	...	None	None	None
10	...	None	None	None

right of way dedication shall be allowed.
applicant within Lakeside Crossing shall comply
with all applicable regulations.

Author: mberry

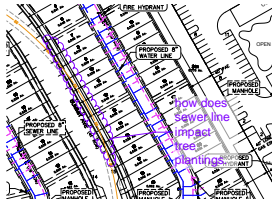
delete page

delete page



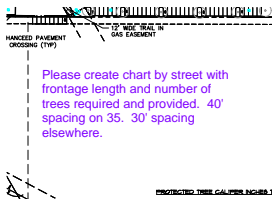
Author: mberry

remove, unnessecary



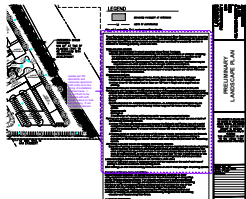
Author: mberry

how does sewer line impact tree plantings.



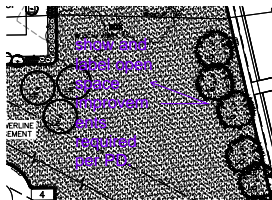
Author: mberry

Please create chart by street with frontage length and number of trees required and provided. 40' spacing on 35. 30' spacing elsewhere.



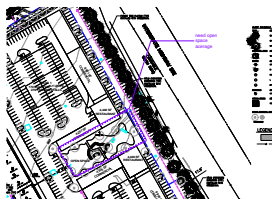
Author: mberry

update per PD standards and variances approved. Add notes as to the timing of installation of street trees. I expect them to be installed with streets based on final plat phasing. If not we need to discuss.



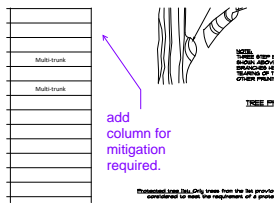
Author: mberry

show and label open space improvements required per PD.



Author: mberry

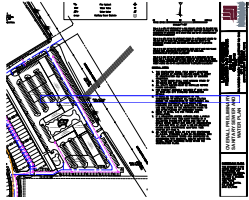
need open space acerage



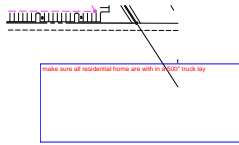
Author: mberry

add column for mitigation required.

treese (4)

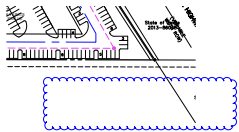


Author: treese

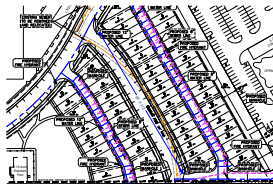


Author: treese

make sure all residential home are with in a 500" truck lay



Author: treese



Author: treese

59'-3 1/2"