

MEMORANDUM

TO: Claire Powell, City Manager

FROM: Stacie Anaya, Parks and Recreation Director

DATE: December 2, 2024

SUBJECT: **Approval of an Interlocal Cooperation Agreement with the Lewisville Independent School District for Open Access for Public School Yards as Parks; and Authorization for the City Manager, or Her Designee, to Execute the Agreement.**

BACKGROUND

On September 18, 2017, the City Council endorsed participation in the 10-Minute Walk to a Park Campaign - an initiative built by The Trust For Public Land (TPL) with the support of the National Recreation and Park Association (NRPA) and the Urban Land Institute (ULI) to celebrate communities that have made a commitment to creating an equitable, safe and healthy environment for their residents and visitors. In 2019, the City of Lewisville entered into an agreement with LISD to designate eight school yards located in Lewisville neighborhoods that were considered parks deserts as public parks during non-school hours and times.

Table 1 - School Yards in Current Agreement

School	# of residents with 10MWP	# of children < 20 with 10MWP
Rockbrook ES	1,094	192
Lakeland ES	4,203	1,355
Lewisville ES	4,335	1,285
Parkway ES	1,155	298
Degan ES	2,645	547
Central ES	1,645	454
Hedrick MS	1,240	433
Mill Street ES	1,835	460
Total	18,152	5,024

ANALYSIS

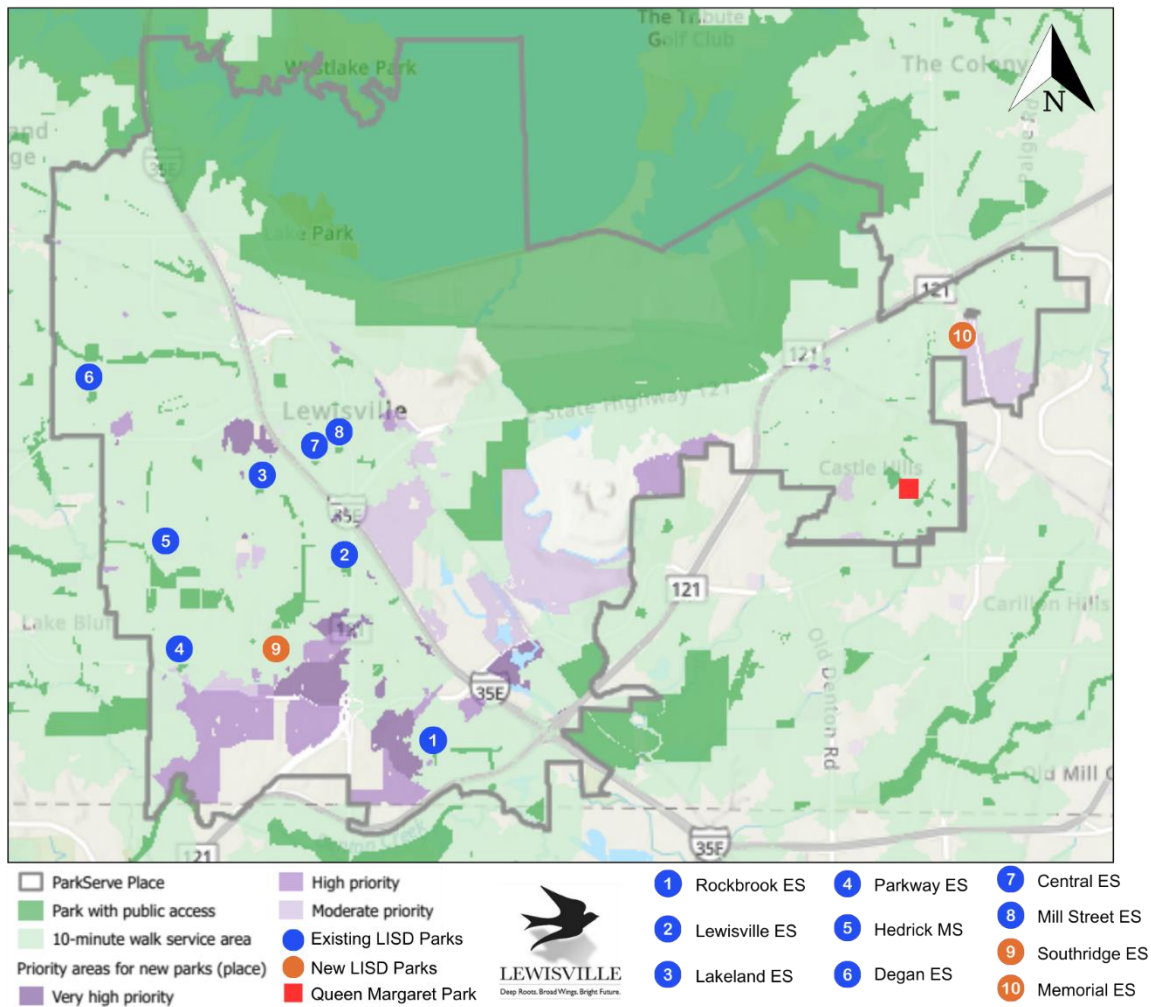
Currently, 83% of residents in Lewisville live within a 10 Minute Walk to a Park. Unfortunately, that means that over 22,000 residents do not enjoy the benefits of living near a park. The proposed agreement provides two additional school yards to be integrated into the agreement to bridge gaps in southern Lewisville and in the Castle Hills area. The agreement has also been expanded to include LISD’s use and defines maintenance responsibilities for Queen Margaret Park as a school yard for Castle Hills Elementary School. This park transferred from the Fresh Water District to the City upon annexation and has always been used by the school. The term of the agreement is extended to 2041 with additional five-year extensions or notice to terminate with 60 days’ notice.

Table 2 – School Yard Additions

School	Address
Memorial ES	1001 N. Josey Lane
Southridge ES	495 W. Corporate Drive
Queen Margaret Park*	1025 Holy Grail Drive

Below is TPL’s 10 Minute Walk to a Park map for Lewisville demonstrating where park deserts exist (purple areas) in Lewisville. The (blue dots) are existing LISD Schoolyard Parks, the (orange dots) are new LISD School Yard Parks and the (red square) is Queen Margaret Park.

Trust for Public Land 10-Minute Walk to a Park



Together with the original school yards, these properties will provide over 22,500 residents access to a park and open space within a 10-minute walk of where they live. The two schoolyard additions will increase the City’s ParkServe score from 83% to almost 85%.

School	# of residents with 10MWP	Projected increase # of children < 20 with 10MWP
Memorial ES	1,038	154
Southridge ES	3,419	909
Queen Margaret Park*	2,624*	893*
Total	4,457	1,063

**City Park; already counted in TPL’s ParkServe ratio*

The new agreement also commits LISD to build a playground and install other recreation equipment on the grounds of Hedrick Middle School as originally envisioned when the first agreement was executed. In turn, the City will replace the playground and make other improvements to Queen Margaret Park. Each entity has identified funds for the respective projects, will work together to ensure design meets the goals of each entity, and will complete the projects by December 2025.

Per the agreement, the City will continue to complement LISD’s maintenance efforts at each school yard by providing weekend trash and debris removal throughout the year, as well as mowing the school yards during summer break. In addition, the City Manager and Superintendent will be authorized to agree to minor improvements that can be made to each school yard. The LISD School Board approved the agreement at its November 12 regular board meeting.

CITY STAFF’S RECOMMENDATION

That the City Council approve the agreement and authorize the City Manager, or her designee, to execute the agreement as set forth in the caption above.