

C) To reduce the required minimum brick or stone facade requirements between the two buildings, representing an aggregate 22,033 square feet, to an aggregate 8,152 square feet, a 63% reduction.
D) To reduce required minimum length of facade coverage, a 5% reduction.

BUILDING 1 | FACADE MATERIAL CALCULATIONS

NORTH ELEVATION

MATERIAL	AREA (SF)	% OF NET FACADE AREA
GROSS FACADE AREA	14,382 SF	
DOORS, WINDOWS, & MECHANICAL	2,989 SF	
NET FACADE AREA	11,393 SF	
BRICK/STONE PROVIDED	0 SF	0%
BRICK/STONE REQUIRED	1,139 SF	10%
CONCRETE - TEXTURE PAINTED	11,393 SF	100%
CONCRETE - WITH REVEALS	0 SF	0%
METAL	0 SF	0%

SOUTH ELEVATION

MATERIAL	AREA (SF)	% OF NET FACADE AREA
GROSS FACADE AREA	15,633 SF	
DOORS, WINDOWS, & MECHANICAL	4,006 SF	
NET FACADE AREA	11,627 SF	
BRICK/STONE PROVIDED	3,267 SF	28.1%
BRICK/STONE REQUIRED	1,744 SF	15%
CONCRETE - TEXTURE PAINTED	4,259 SF	36.6%
CONCRETE - WITH REVEALS	3,898 SF	33.6%
METAL	203 SF	1.7%

CANOPY LENGTH - 203'-4" (TOTAL) FACADE LENGTH - 428'-0" RATIO - 47.5%

EAST ELEVATION

MATERIAL	AREA (SF)	% OF NET FACADE AREA
GROSS FACADE AREA	5,838 SF	
DOORS, WINDOWS, & MECHANICAL	972 SF	
NET FACADE AREA	4,866 SF	
BRICK/STONE PROVIDED	794 SF	15.9%
BRICK/STONE REQUIRED	498 SF	10%
CONCRETE - TEXTURE PAINTED	3,440 SF	69.1%
CONCRETE - WITH REVEALS	702 SF	14.1%
METAL	44 SF	.9%

CANOPY LENGTH - 44'-0" (TOTAL) FACADE LENGTH - 158'-0" RATIO - 27.8%

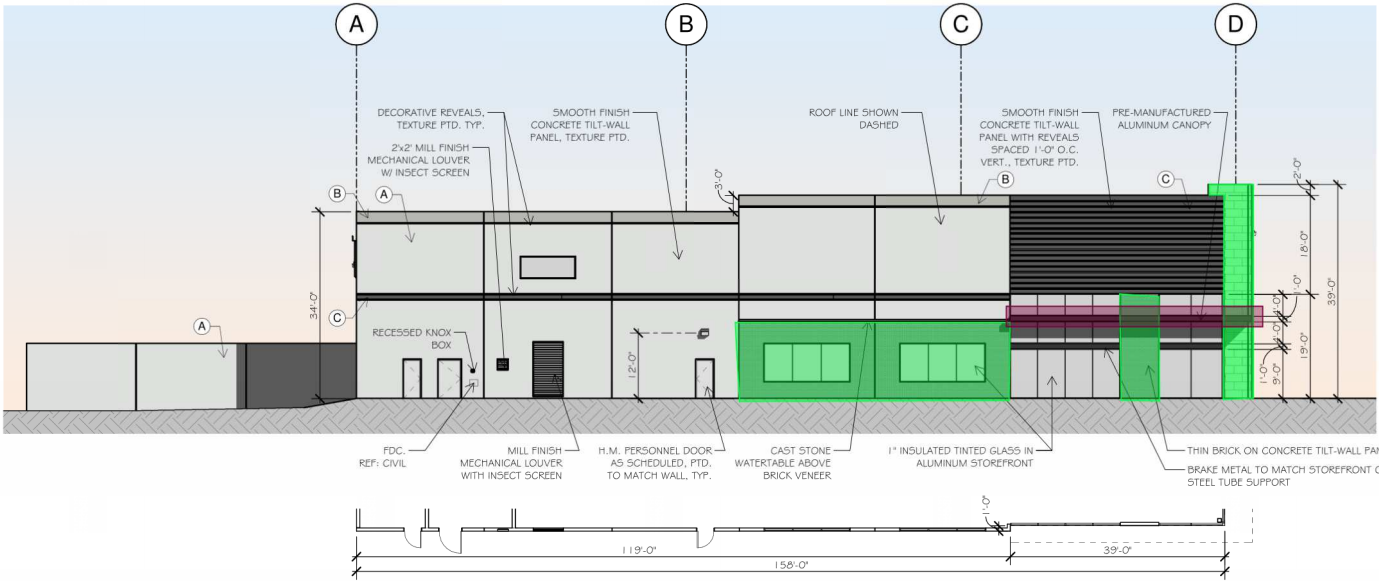
WEST ELEVATION

MATERIAL	AREA (SF)	% OF NET FACADE AREA
GROSS FACADE AREA	5,838 SF	
DOORS, WINDOWS, & MECHANICAL	972 SF	
NET FACADE AREA	4,866 SF	
BRICK/STONE PROVIDED	794 SF	16.3%
BRICK/STONE REQUIRED	487 SF	10%
CONCRETE - TEXTURE PAINTED	3,326 SF	68.4%
CONCRETE - WITH REVEALS	702 SF	14.4%
METAL	44 SF	.9%

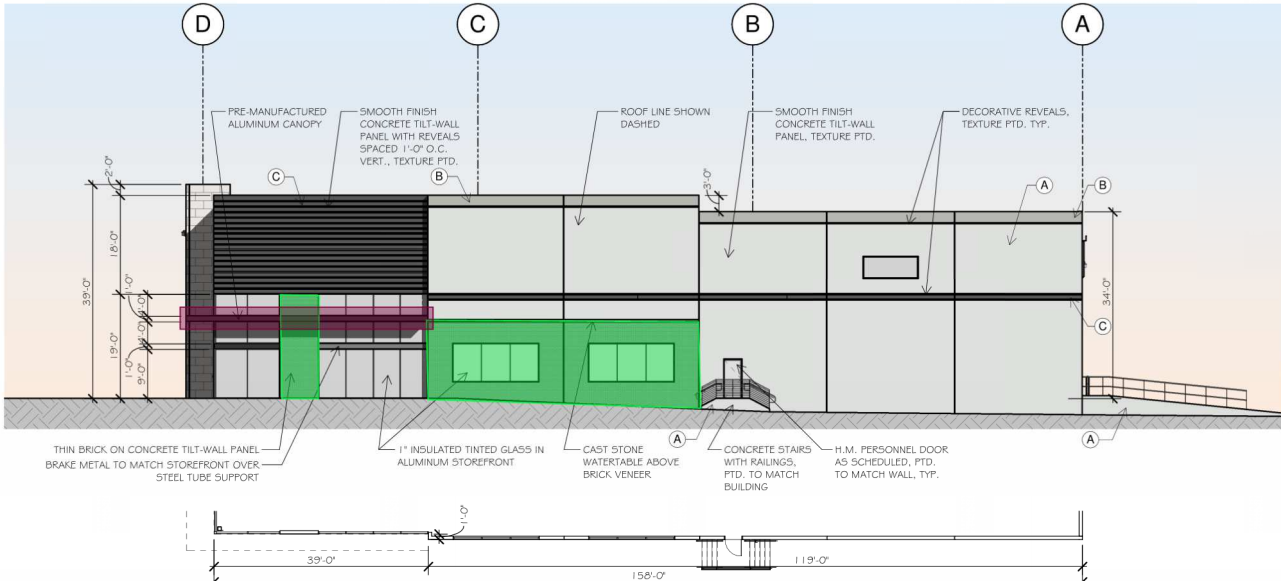
CANOPY LENGTH - 44'-0" (TOTAL) FACADE LENGTH - 158'-0" RATIO - 27.8%

PAINT SCHEDULE

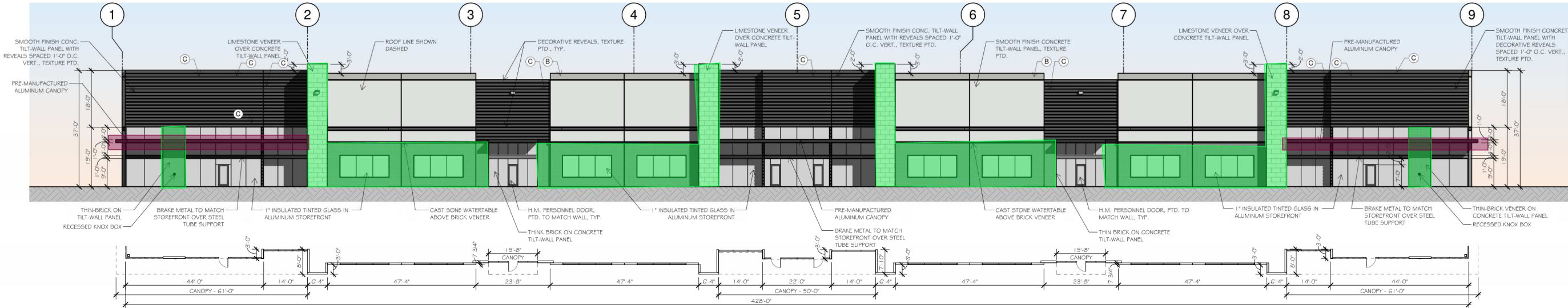
(A)	BASE PAINT COLOR - SW 7656 RHINESTONE
(B)	ACCENT PAINT COLOR - SW 7658 GRAY CLOUDS
(C)	ACCENT PAINT COLOR - SW 7674 PEPPERCORN



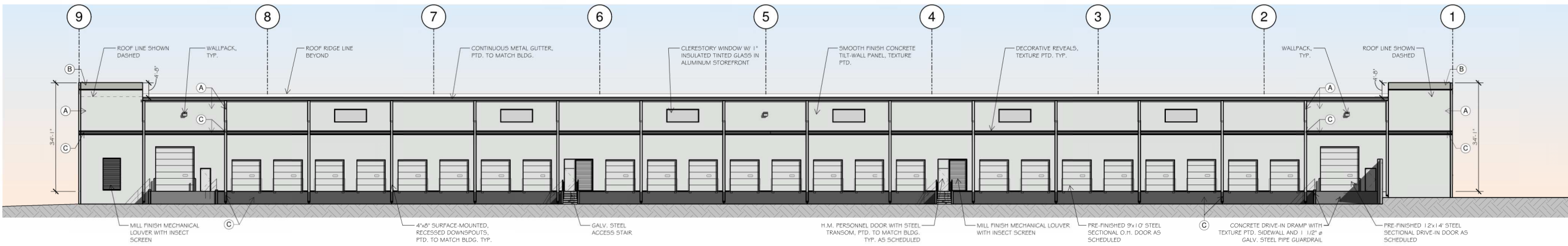
4 WEST ELEVATION - BUILDING 1
SCALE: 1/16" = 1'-0"



3 EAST ELEVATION - BUILDING 1
SCALE: 1/16" = 1'-0"



2 SOUTH ELEVATION - BUILDING 1
SCALE: 1/16" = 1'-0"



1 NORTH ELEVATION - BUILDING 1
SCALE: 1/16" = 1'-0"

BUILDING 2 | FACADE MATERIAL CALCULATIONS

NORTH ELEVATION
WATER: 8,282 SF
GROSS FACADE AREA
DOORS, WINDOWS, & MECHANICAL: 1,669 SF
NET FACADE AREA
BRICK/STONE PROVIDED: 0 SF
BRICK/STONE REQUIRED: 5,290 SF
CONCRETE - TEXTURE PAINTED: 6,613 SF
CONCRETE - WITH REVEALS: 9 SF
METAL: 0 SF

% OF NET FACADE AREA
0%
80%
100%
0%
0%

SOUTH ELEVATION
WATER: 9,005 SF
GROSS FACADE AREA
DOORS, WINDOWS, & MECHANICAL: 2,471 SF
NET FACADE AREA
BRICK/STONE PROVIDED: 1,743 SF
BRICK/STONE REQUIRED: 5,227 SF
CONCRETE - TEXTURE PAINTED: 2,117 SF
CONCRETE - WITH REVEALS: 2,536 SF
METAL: 138 SF

% OF NET FACADE AREA
26.7%
80%
32.4%
38.8%
2.1%

CANOPY LENGTH - 137'-9" (TOTAL) FACADE LENGTH - 245'-0" RATIO - 56.2%

EAST ELEVATION
WATER: 5,668 SF
GROSS FACADE AREA
DOORS, WINDOWS, & MECHANICAL: 917 SF
NET FACADE AREA
BRICK/STONE PROVIDED: 794 SF
BRICK/STONE REQUIRED: 3,800 SF
CONCRETE - TEXTURE PAINTED: 3,211 SF
CONCRETE - WITH REVEALS: 702 SF
METAL: 44 SF

% OF NET FACADE AREA
16.7%
80%
67.6%
14.8%
9%

CANOPY LENGTH - 44'-0" (TOTAL) FACADE LENGTH - 153'-0" RATIO - 28.8%

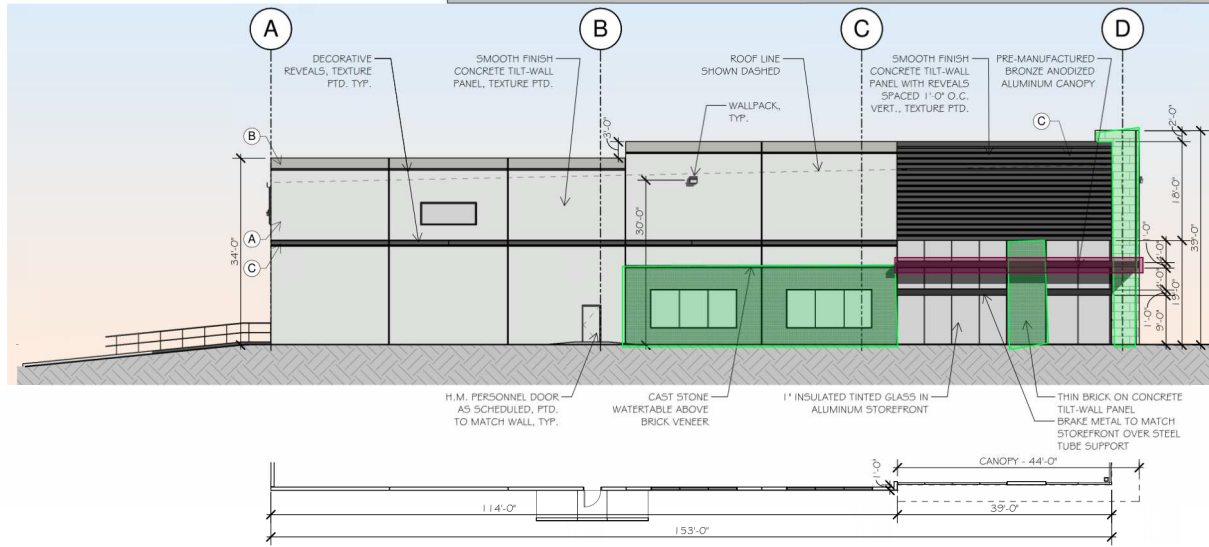
WEST ELEVATION
WATER: 5,668 SF
GROSS FACADE AREA
DOORS, WINDOWS, & MECHANICAL: 858 SF
NET FACADE AREA
BRICK/STONE PROVIDED: 793 SF
BRICK/STONE REQUIRED: 3,848 SF
CONCRETE - TEXTURE PAINTED: 3,271 SF
CONCRETE - WITH REVEALS: 702 SF
METAL: 44 SF

% OF NET FACADE AREA
16.5%
80%
68%
14.6%
9%

CANOPY LENGTH - 44'-0" (TOTAL) FACADE LENGTH - 153'-0" RATIO - 28.8%

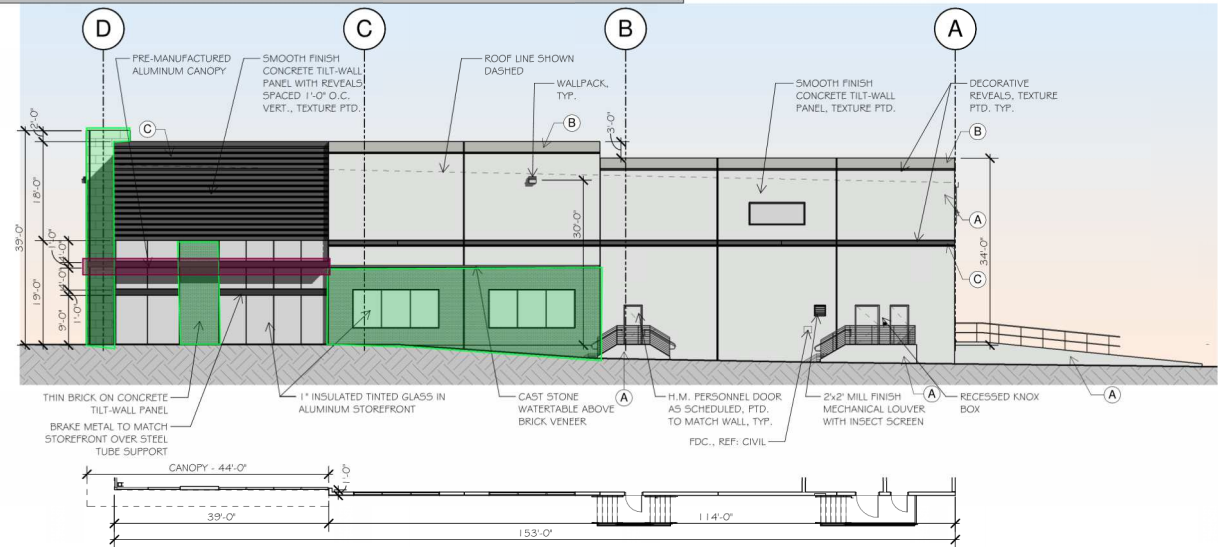
PAINT SCHEDULE

(A)	BASE PAINT COLOR - SW 7656 RHINESTONE
(B)	ACCENT PAINT COLOR - SW 7658 GRAY CLOUDS
(C)	ACCENT PAINT COLOR - SW 7674 PEPPERCORN



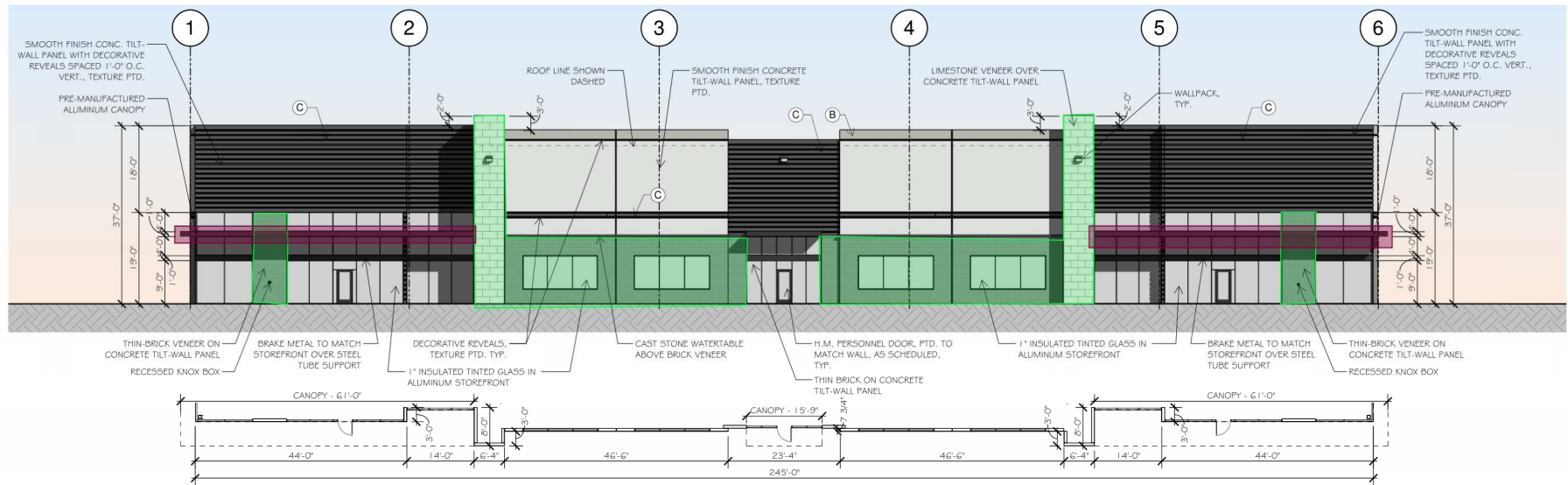
4 WEST ELEVATION - BUILDING 2

SCALE: 1/16" = 1'-0"



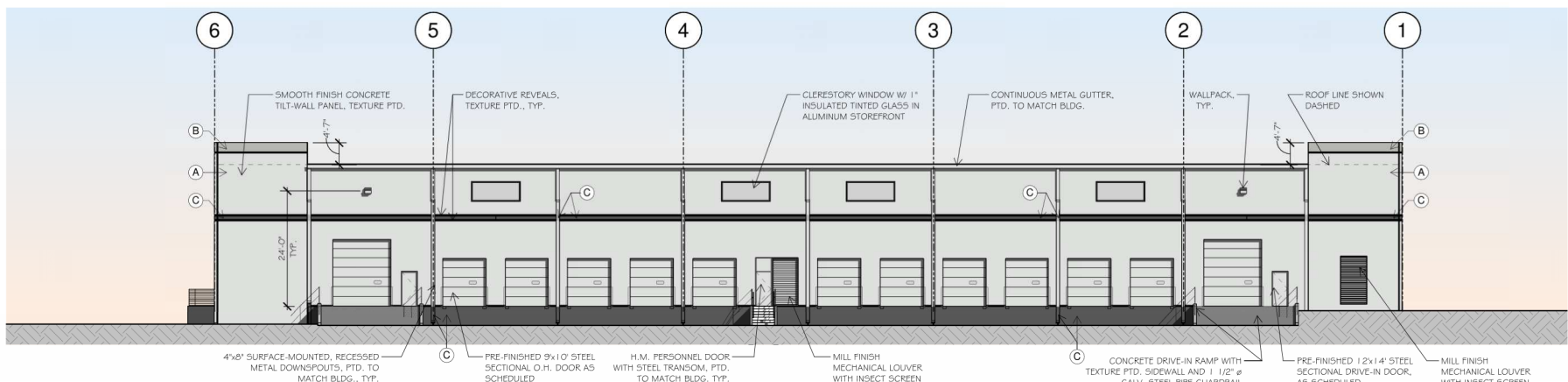
3 EAST ELEVATION - BUILDING 2

SCALE: 1/16" = 1'-0"



2 SOUTH ELEVATION - BUILDING 2

SCALE: 1/16" = 1'-0"



1 NORTH ELEVATION - BUILDING 2

SCALE: 1/16" = 1'-0"

drawn: SF
checked: ROBERT PROSS
date: 11/18/2024

DESCRIPTION

DATE



11/18/2024

CH REALTY X-GAP
DFW, OAKBEND, L.P.



pross design group, incorporated
5310 Harvest Hill Road, Suite 180, Dallas, Texas 75250-9727/509-1400

OAKBEND INDUSTRIAL
420 OAKBEND DR
LEWISVILLE, TEXAS

job no
2422
sheet

A3.1