

## MEMORANDUM

**TO:** Donna Barron, City Manager

**FROM:** David Salmon, P.E., City Engineer

**VIA** Eric Ferris, Deputy City Manager

**DATE:** July 19, 2021

**SUBJECT:** **Consideration of an Ordinance Amending the Lewisville City Code, Section 15-36, Maximum Speed Limits Near Schools; Establishing School Zone Speed Limit on Josey Lane, from 500 Feet North of the Memorial Elementary School North Driveway to 500 Feet South of Lake Falls Terrace of 35 Miles Per Hour.**

### **BACKGROUND**

Lewisville Independent School District (LISD) plans to open the new Memorial Elementary School on the west side of Josey Lane for the upcoming 2021-2022 school year. The proposed speed limit on Josey Lane is 50 mph. A 35-mph school speed zone is proposed on Josey Lane for the new Elementary School extending 500 feet on either side of the school boundary.

### **ANALYSIS**

Memorial Elementary School is currently under construction on the west side of Josey Lane. Lewisville Independent School District plans to open the new school for the upcoming 2021 – 2022 school year. The new school necessitates the establishment of a school speed zone on Josey Lane.

State regulations only allow the school zone speed limit to be reduced by a 15-mile decrement from the posted speed limit. The proposed speed limit on Josey Lane is 50 mph. A 50-mph posted speed limit on the roadway would allow a school zone speed limit of 35 mph.

A similar 35 mph school speed zone currently exists on F.M. 544, where the posted speed limit is 50 mph as well.

School Zone Limits:

Subject: Memorial Elementary School Zone  
 Page 2

The higher 50 mph speed limit on Josey Lane necessitates a longer speed zone than typically established. The recommended school speed zone is summarized in the table below and illustrated in the figure below as well.

SCHOOL SPEED ZONE	PROPOSED LIMITS
Josey Lane	From 500 feet north of the north curb line of Memorial Elementary School north driveway to 500 feet south of Lake Falls Terrace.

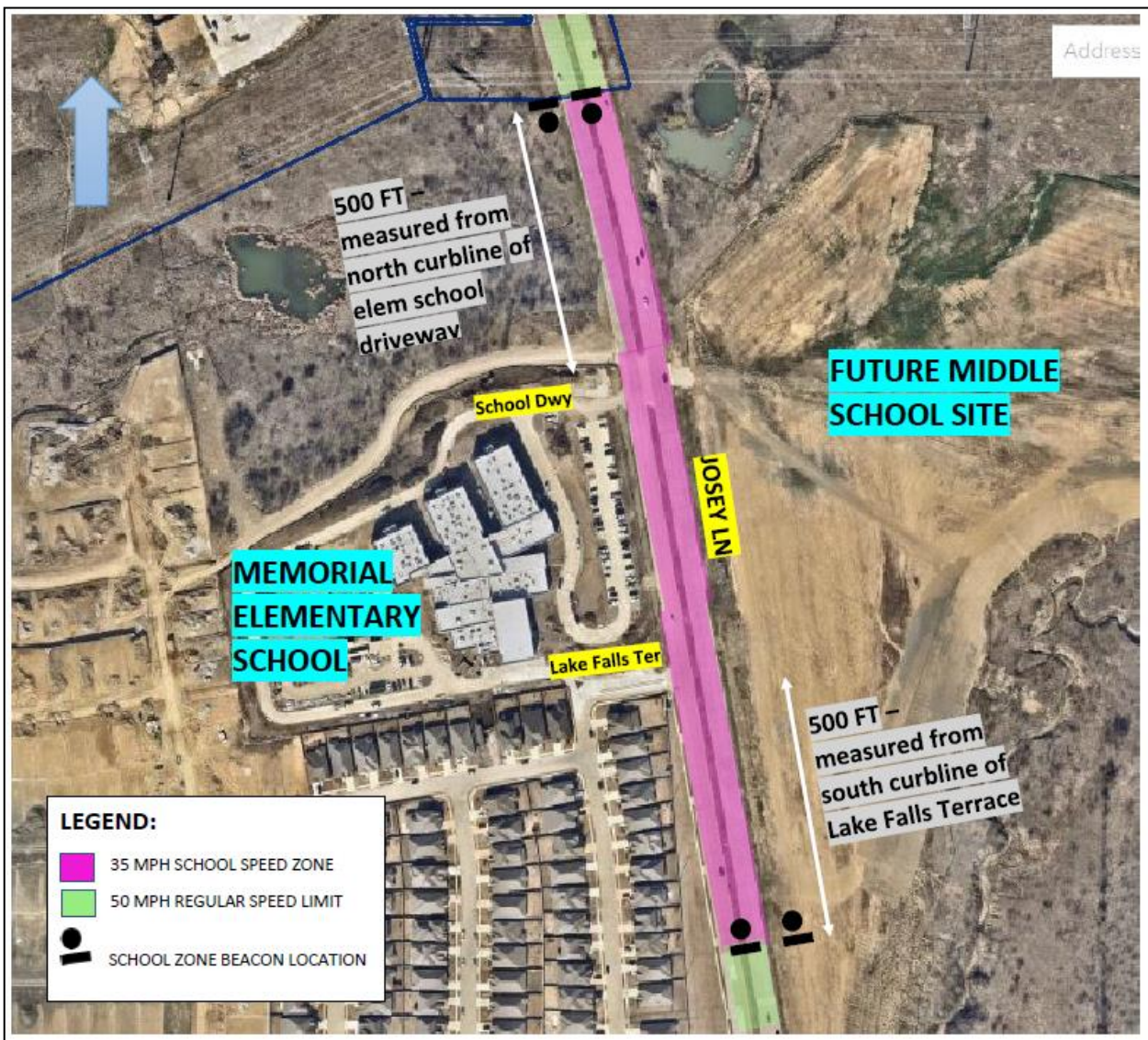


Figure 1: Proposed 35 mph School Speed Zone Extension on Josey Lane

Subject: Memorial Elementary School Zone  
Page 3

Flashing beacons and associated signage are proposed to be paid for and installed by the Lewisville ISD. The proposed cost for solar powered beacons is roughly \$15,000 - \$20,000. Staff is discussing details with the LISD.

Related signage will be paid for and installed by the City of Lewisville Public Services Department.

**RECOMMENDATION**

It is City Staff's recommendation that the City Council approve the ordinance as set forth in the caption above.