



T: 469.331.8566 | Firm: 11525 | W: triangle-engr.com | O: 1782 W McDermott Drive Allen, TX 75013

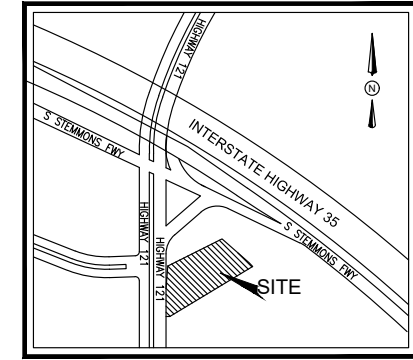
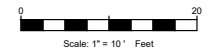
November 01, 2023
Overlay District Board
City Council
151 W. Church St.
Lewisville, TX 75057

Request for Alternative Standards for property at 1181 South Stemmons, Lewisville, TX (site area : 0.181 acres)

For your Consideration,

Triangle Engineering, on behalf of our client, is submitting this alternative standard request for site at 1181 South Stemmons, Lewisville, TX. The following variance are being requested for development of the site.

1. Article VI, chapter 8, subsection 1 (exhibit VI.8.1-7) The requested alternate standard is to allow 6 feet building setback instead of 10 feet from SH 121 business and I-35 right of way. *(Approved by the Overlay District Board on November 7, 2023.)*
 - a) Article VI, chapter 8, Subsection B.2.a.1 To allow the building façade to be placed perpendicular to public Street.
 - b) Article VI, chapter 8, Subsection B.4.6 To allow a parking lot along the IH-35E Frontage Road with a 10-foot landscape buffer in lieu of the required 20-foot buffer.
 - c) Article VI, Chapter 8, Subsection B.3.c.1 to allow the building facades to be 48% brick or stone on the north side, 75% on the west side and 70% on the south side in lieu of the required 80%.



VICINITY MAP
N.T.S.

SITE GENERAL NOTES

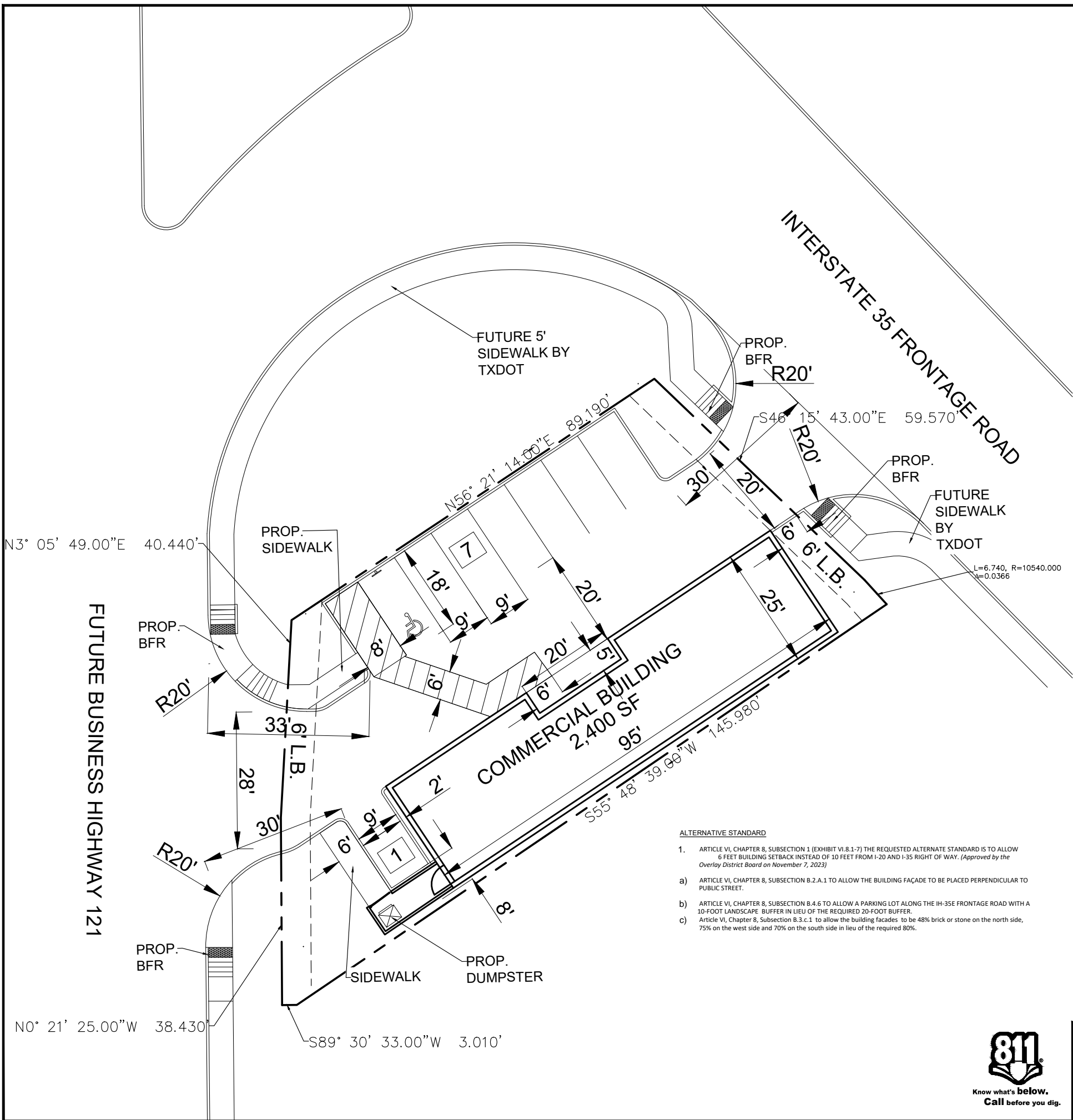
- ALL CONSTRUCTION SHALL BE IN STRICT ACCORDANCE WITH THE CITY OR LOCAL JURISDICTION STANDARDS.
- THE LOCATION OF UNDERGROUND UTILITIES INDICATED ON THE PLANS IS TAKEN FROM AS-BUILTS, UTILITY PLANS OR SURVEY. IT IS THE CONTRACTOR'S RESPONSIBILITY TO MAKE ARRANGEMENTS WITH THE OWNERS OF SUCH UNDERGROUND UTILITIES PRIOR TO WORKING IN THE AREA TO CONFIRM THEIR EXACT LOCATION AND TO DETERMINE WHETHER ANY ADDITIONAL UTILITIES OTHER THAN THOSE SHOWN ON THE PLANS MAY BE PRESENT. THE CONTRACTOR SHALL PRESERVE AND PROTECT ALL UNDERGROUND UTILITIES. IF EXISTING UNDERGROUND UTILITIES ARE DAMAGED, THE CONTRACTOR WILL BE RESPONSIBLE FOR THE COST OF REPAIRING THE UTILITY.
- WHERE EXISTING UTILITIES OR SERVICE LINES ARE CUT, BROKEN OR DAMAGED, THE CONTRACTOR SHALL REPLACE OR REPAIR THE UTILITIES OR SERVICE LINES WITH THE SAME TYPE OF ORIGINAL MATERIAL AND CONSTRUCTION, OR BETTER, UNLESS OTHERWISE SHOWN OR NOTED ON THE PLANS, AT HIS OWN COST AND EXPENSE. THE CONTRACTOR SHALL IMMEDIATELY NOTIFY THE ENGINEER AT ONCE OF ANY CONFLICTS WITH UTILITIES.
- ALL EXCAVATIONS, TRENCHING AND SHORING OPERATIONS SHALL COMPLY WITH THE REQUIREMENTS OF THE U. S. DEPARTMENT OF LABOR, OSHA CONSTRUCTION SAFETY AND HEALTH REGULATIONS AND ANY AMENDMENTS THERETO.
- THE CONTRACTOR SHALL RESTORE ALL AREAS DISTURBED BY CONSTRUCTION TO ORIGINAL CONDITION OR BETTER. RESTORED AREAS INCLUDE, BUT ARE NOT LIMITED TO TRENCH BACKFILL, SIDE SLOPES, FENCES, DRAINAGE DITCHES, DRIVEWAYS, PRIVATE YARDS AND ROADWAYS.
- ANY CHANGES NEEDED AFTER CONSTRUCTION PLANS HAVE BEEN RELEASED, SHALL BE APPROVED BY THE CITY ENGINEER. THESE CHANGES MUST BE RECEIVED IN WRITING.
- THE CONTRACTOR SHALL PROVIDE "RED LINED" MARKED PRINTS TO THE ENGINEER PRIOR TO FINAL INSPECTION INDICATING ALL CONSTRUCTION WHICH DEVIATED FROM THE PLANS OR WAS CONSTRUCTED IN ADDITION TO THAT INDICATED ON THE PLANS.
- ALL CURB RADIUS TO BE 10' OR 2' UNLESS OTHERWISE NOTED ON THE SITE PLAN.

SITE DATA SUMMARY TABLE	
SITE ACREAGE:	0.181 ACRES (7,884.36 S.F.)
ZONING:	GENERAL BUSINESS
PROPOSED USE:	COMMERCIAL BUILDING
BUILDING AREA:	2,400 S.F.
NUMBER OF STORIES:	1
REGULAR PARKING REQUIRED: 1 SP PER 300 S.F.	8 SPACES
REGULAR PARKING PROVIDED:	7 SPACES
HANDICAP PARKING REQUIRED:	1 SPACE (1 VAN ACCESSIBLE)
HANDICAP PARKING PROVIDED:	1 SPACE (1 VAN ACCESSIBLE)
TOTAL PARKING PROVIDED:	8 SPACES

SITE LEGEND	
CONCRETE CURB	
STRIPING	
PARKING SPACES	
WHEEL STOPS	
HANDICAP LOGO	
HANDICAP SIGN	
RAMP	
FIRE HYDRANT	
DUMPSTER	

ALTERNATIVE STANDARD

- ARTICLE VI, CHAPTER 8, SUBSECTION 1 (EXHIBIT VI.8.1-7) THE REQUESTED ALTERNATE STANDARD IS TO ALLOW 6 FEET BUILDING SETBACK INSTEAD OF 10 FEET FROM I-20 AND I-35 RIGHT OF WAY. (Approved by the Overlay District Board on November 7, 2023)
- ARTICLE VI, CHAPTER 8, SUBSECTION B.2.A.1 TO ALLOW THE BUILDING FAÇADE TO BE PLACED PERPENDICULAR TO PUBLIC STREET.
- ARTICLE VI, CHAPTER 8, SUBSECTION B.4.6 TO ALLOW A PARKING LOT ALONG THE IH-35E FRONTAGE ROAD WITH A 10-FOOT LANDSCAPE BUFFER IN LIEU OF THE REQUIRED 20-FOOT BUFFER.
- ARTICLE VI, CHAPTER 8, SUBSECTION B.3.c.1 TO ALLOW THE BUILDING FACADES TO BE 48% BRICK OR STONE ON THE NORTH SIDE, 75% ON THE WEST SIDE AND 70% ON THE SOUTH SIDE IN LIEU OF THE REQUIRED 80%.



NO.	DATE	DESCRIPTION	BY
1	08/23/23	1st CITY SUBMITTAL	AY
.	.	.	.
.	.	.	.
.	.	.	.
.	.	.	.
.	.	.	.
.	.	.	.
.	.	.	.

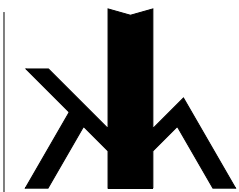
CONCEPTUAL SITE PLAN
COMMERCIAL PROJECT
 INTERSTATE 35 FRONTAGE RD
 CITY OF LEWISVILLE
 DENTON COUNTY, TEXAS 76057

T: 469.331.8566 | F: 469.213.7145 | E: info@triangle-engr.com
 W: triangle-engr.com | O: 1782 W. McDermott Drive, Allen, TX 75013

Planning | Civil Engineering | Construction Management

P.E.	DES.	DATE	SCALE	PROJECT NO.	SHEET NO.
AY	DK	08/22/23	SCALE BAR	XXX-23	C-3.0

TX. P.E. FIRM #11525



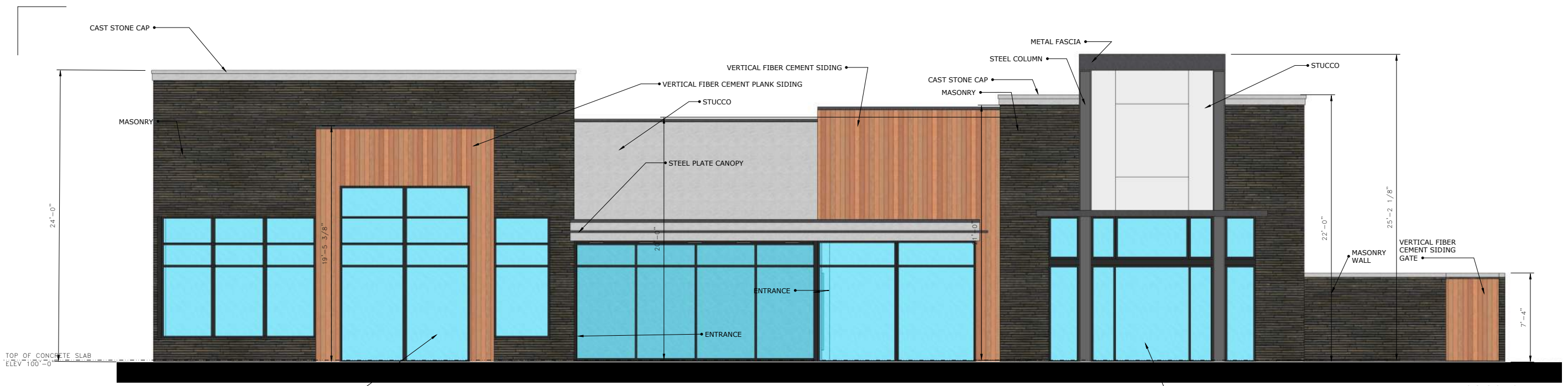
KH ARCHITECT
 627 DOVE COVE COURT
 MURPHY, TX 75094
 P. 214-395-6885
 F. MAIL: KENHALL@KHARCHITECT.COM

CONTRACTOR SHALL VERIFY ALL CONDITIONS AND DIMENSIONS AT THE JOB SITE AND NOTIFY THE ARCHITECTS OF ANY DIMENSIONAL ERRORS, OMISSIONS OR DISCREPANCIES BEFORE BEGINNING OR FABRICATING ANY WORK. DO NOT SCALE DRAWINGS.

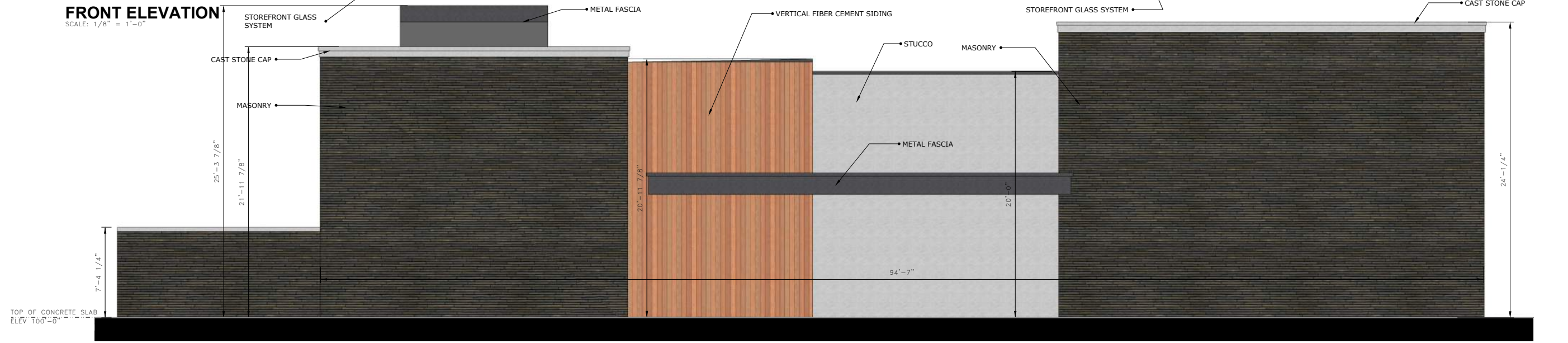
LEWISVILLE - RETAIL BUILDING
 PLANNING SUBMITTAL
 SW CORNER -
 S. TX 121 / S. STEMMONS FRWY
 LEWISVILLE, TX 75067

NO.	DATE	REVISIONS

KHA JOB NUMBER
2023.450
 SHEET NUMBER
A2.201
ELEVATION
EXHIBIT
 DATE OF ORIGINAL ISSUE
 17 AUGUST 2023
 DATE OF THIS PRINTING
 17 OCTOBER 2023



FRONT ELEVATION
 SCALE: 1/8" = 1'-0"



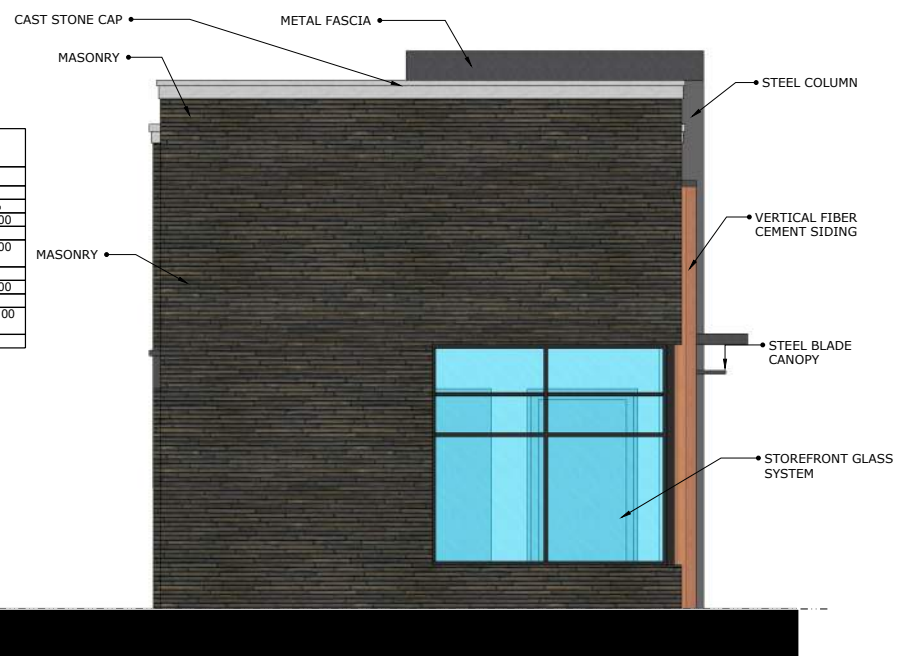
REAR (SOUTH) ELEVATION
 SCALE: 1/8" = 1'-0"

MATERIAL CALCULATION WALL LOCATION	EAST		WEST		NORTH		SOUTH	
	SF	%	SF	%	SF	%	SF	%
MASONRY	510.00	80.00	435.00	75.00	506.00	48.00	1220.00	70.00
VERTICAL FIBER CEMENT SIDING	0.00	-	29.00	5.00	408.00	38.00	226.00	13.00
STUCCO (PAINTED)	125.00	20.00	117.00	20.00	147.00	14.00	196.00	17.00
TOTAL SF / % OF QUALIFYING FACADE	635.00	100.00	581.00	100.00	1061.00	100.00	1742.00	100.00



RIGHT (WEST) ELEVATION
 SCALE: 1/8" = 1'-0"

STOREFRONT GLASS SYSTEM - ANODIZED DARK BRONZE OR BLACK ALUMINUM WITH LOW E, DOUBLE GLAZED GLASS - TYPICAL OF ALL STOREFRONT GLASS - NON-REFLECTIVE GLASS - 3" RECESS TYPICAL



LEFT (EAST) ELEVATION
 SCALE: 1/8" = 1'-0"



VIEW OF EAST ELEVATION



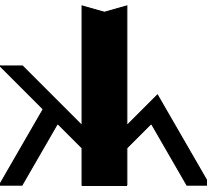
VIEW OF NORTH ELEVATION



VIEW OF SOUTH ELEVATION



VIEW OF WEST ELEVATION



KH ARCHITECT
627 DOVE COVE COURT
MURPHY, TX 75094

P. 214-295-6885
© 2023 KH ARCHITECT

CONTRACTOR SHALL VERIFY ALL
CONDITIONS AND DIMENSIONS
AT THE JOB SITE AND NOTIFY
THE ARCHITECTS OF ANY DIMEN-
SIONAL ERRORS, OMISSIONS OR
DISCREPANCIES BEFORE BEGIN-
NING OR FABRICATING ANY WORK
DO NOT SCALE DRAWINGS

LEWISVILLE - RETAIL BUILDING
PLANNING SUBMITTAL

SW CORNER -
S. TX 121 / S. STEMMONS FRWY
LEWISVILLE, TX 75067

NO.	DATE	REVISIONS

© KHA JOB NUMBER

2023.450

SHEET NUMBER

A2.200

ELEVATION

IMAGES

DATE OF ORIGINAL ISSUE

18 AUGUST 2023

DATE OF THIS PRINTING

17 OCTOBER 2023



EXTERIOR STUCCO

Portland Cement Stucco Finishes



Coverage

Approximately 8yd to 10yd per bag at 3/8" thick. Coverage may vary depending on the amount of sand and water used, along with various depth of lath. Surface porosity mixing and application methods can contribute to various yields.

Packaging

Moisture resistive, 90lb (40.8kg) bags

Storage

1. Protect bags from weather and other damage
2. Store bags in a cool, dry location
3. Store out of direct sunlight
4. Store away from direct contact with the ground and/or concrete

Shelf Life

1 Year

Color

White, grey, or factory-mixed custom color



SCAN FOR
 FULL LIST OF
 SPEC SHEETS

Product Description

Exterior Stucco is a premium, factory blended, cement-based, stucco finish manufactured from the highest-grade portland cement, hydrated lime, graded aggregates, and specific additives. Exterior Stucco comes in various aggregate combinations that allow design flexibility and a variety of finish textures. The following aggregate combinations are available, in order of aggregate size:

- Coarse: Used to create heavy laced texture, sand finish, or machine dash finish
- 16/20: Used to create traditional texture, sand finish, or machine dash finish
- 20/30: Used to create a fine texture or sand finish
- 30/30: Used to create a uniform fine sand finish

Exterior Stucco is available as a Base A (white) or Base B (grey) which may be colored in the field using the Superior Stucco Color Pack system. Alternatively, Exterior Stucco is offered as a factory mixed colored stucco. Minimum quantities may apply when ordering factory-blended products.

Features

Benefits

<i>Integral Color</i>	Lasting, uniform color that resists fading or discoloration; UV resistant
<i>Durable</i>	Long life-cycle with minimal maintenance
<i>Fire Resistant</i>	Does not burn
<i>Impact Resistant</i>	Resists impact damage
<i>Economical</i>	Lower cost product and easy to apply
<i>Insect Resistant</i>	Impervious to termites, rot, and fungus

Basic Uses

Exterior Stucco is intended for use as a decorative, low-cost, low-maintenance finish.

Area of Use

Exterior Stucco may be applied over the following products:

1. One coat stucco
2. Brown coat
3. Existing Stucco
4. CMU/poured-in-place and/or tilt-up concrete/masonry
5. Approved Superior Stucco base coats and/or cementitious finishes

NOTE: When Exterior Stucco is applied over polymer-modified base coats, the use of a bonding agent or acrylic admix is strongly recommended or may be required to ensure proper bond. See the applicable Superior Stucco system data sheet or base coat data sheet for additional information.

Optional Product Upgrades/Enhancements

Product	Benefit
Admix 2000 Ultra Tite 60 Acrylic Bonder	Liquid admixtures that reduce cracking and increase tensile, bond, and flexural strengths
Crack Guard Base	Supplementary system designed to mitigate surface cracking in new and existing plaster systems by integrating woven fiberglass mesh into the base coat prior to applying the finish

www.StuccoSupplyCo.com

1601 Little Orchard Street, Ste. E, San Jose, CA 95110

Surface Preparation

All surfaces to receive application must be clean and free of debris, dirt, dust, efflorescence, grease, oils, curing agents, and cleaning solutions. Ensure that all surfaces are smooth and free of any irregularities. Repair all cracks with the appropriate patching material for the existing substrate. Painted or glossy surfaces should be sandblasted to expose cementitious substrate and ensure a proper bond. The use of a bonder is recommend over cementitious substrates that are four or more months old. If a bonder is not used, just prior to application, dampen all surfaces that are to receive the Exterior Stucco with clean, potable water.

Mixing

1. Add 3.25 gallons (12L) of clean, potable water per bag to an appropriate mixing apparatus.
2. See the Superior Stucco Product Data Sheet for color mixing instructions. (Optional)
3. Turn mixer on and add Superior Stucco bags to the water.
4. Allow the material to mix for a minimum of 15 minutes.
5. Turn mixer off and allow the material to take its initial set.
6. Retemper the material, adding only enough water to reach the desired consistency.
7. Do not over mix.

Application

Exterior Stucco shall be applied to an approximate 1/8" thickness.

Hand Application Method

1. Using a hawk and trowel apply the material to the receiving surface, beginning at one corner and working to the next, in a single coat of uniform thickness.
2. To ensure consistent color, a uniform thickness of application must be maintained.
3. Following the initial applicator, another person should texture or float the applied material to achieve the desired textured appearance.

Machine Sprayed Method

1. Add desired amount of mixed material to sprayer.
2. Begin spraying material onto the receiving surface, starting at a corner and not stopping until the opposite corner is reached. Avoid puddling.
3. To ensure consistent color, a uniform thickness of application must be maintained. A true dash finish usually requires 2 to 3 coats.

Curing

Curing and/or drying time may vary due to climatic conditions. Drying should occur within 24 hours at an ambient and surface temperature of 70°F (21°C) and 55% R.H. When hot, dry, or windy conditions exist, light moist curing and/or protection should be provided. All freshly applied material must be protected from inclement weather until material has sufficient strength not to be damaged. Full curing strength typically occurs in approximately 28 days.

Limitations

- DO NOT** apply product when the ambient and surface temperature is below 40°F (4°C).* The ambient and surface temperature must maintain the above requirements until material has sufficient strength not to be damaged (See CURING). Material that is allowed to freeze may suffer irreparable damage.
- DO NOT** add any other materials to the mixture of the product without written approval from San Jose Stucco Supply.
- DO NOT** deviate in the mixing or application procedures contained in this, or any other Superior Stucco Data Sheets, without written approval from San Jose Stucco Supply.
- DO NOT** apply Exterior Stucco if there are contaminants on the receiving surface. Contaminates may include, but are not limited to, dust, debris, efflorescence, and/or oils.
- DO NOT** add any more water than prescribed.
- DO NOT** saturate the wall during preparation and/or wet curing.
- DO NOT** use excessive amounts of water when floating and/or troweling the texture.

NOTE: Failure to follow manufacturer's written specifications could result in the following, but not limited to spalling, cracking, peeling, chipping, delamination, discoloration, wash off, and overall system failure. Due to job conditions beyond the control of San Jose Stucco Supply, we make no warranty as to the acceptance of the final color. The actual integrally colored finish should be applied on a sample section of the project and verified for color accuracy prior to the actual application process. It is expressly understood and agreed that color, texture and pigment streaking variations are inherent in all integral colored products and these conditions are not considered defects.

Cleaning

Cleaning may be accomplished with water immediately after use.

Safety

Avoid contact with eyes or prolonged contact with skin. Wash thoroughly after handling. In case of eye contact, flush immediately with running water for at least 15 minutes. Consult a physician immediately. Do not take internally. Be sure to provide adequate ventilation in enclosed areas. Use of an approved respirator is recommended.

KEEP OUT OF REACH OF CHILDREN

www.StuccoSupplyCo.com

Disclaimer
Stucco Supply (Manufacturer) MAKES NO WARRANTY OF MERCHANTABILITY OR FITNESS FOR A PARTICULAR PURPOSE WITH RESPECT TO THE PRODUCT(S) SOLD HEREIN. The recommendations, suggestions, statements and technical data are based on the best knowledge available to Manufacturer and are given for informational purposes ONLY and without any responsibility for their use. It is expressly understood and agreed, as a condition of the use of this product, that the buyer's sole and exclusive remedy for any claimed defective product against Manufacturer shall be the replacement of products actually proven to be defective. Handling and use of the products

are beyond the control of Manufacturer; therefore, no warranty is made, expressed or implied, as to the results obtained from the use of the product or against any claims for infringement of patents resulting from use of the product. Under no circumstance shall Manufacturer be liable for incidental or consequential damages arising out of the use of the improper application of the product. Before applying the product, the user shall determine the suitability of the product for his/her independent use, assuming all risks and liability whatsoever in connection therewith. This writing constitutes a complete and exclusive statement of the understanding between Manufacturer and Buyer.

Claims
Any Claimant shall notify Manufacturer immediately in writing of any alleged defect in the material. Claimant will provide Manufacturer with a reasonable and exclusive opportunity to investigate and test for the alleged defect. For any claim that is not valid Claimant agrees to pay Stucco Supply's reasonable charges, including travel and labor associated with investigation of such claim.

Technical Assistance
Technical assistance and information is available by calling (408) 292-0454

Warranty
The following is made in lieu of all expressed and implied rights, warranties and conditions, statutory or otherwise. The manufacturer's only obligation shall be to replace such quantity of products proven to be defective within one year following the date of manufacture, provided that the alleged defective product is returned prepaid to the manufacturer's plant and is accompanied with proof of purchase and batch number.

Statement Collection® Products

It's your turn to let your home stand out with our Statement Collection® products. Curated by our design experts, this collection of Hardie® siding and trim products with ColorPlus® Technology finishes are unique to your home's region. This gorgeous selection is locally stocked in your area, making it easier than ever to find the exterior style of your dreams.

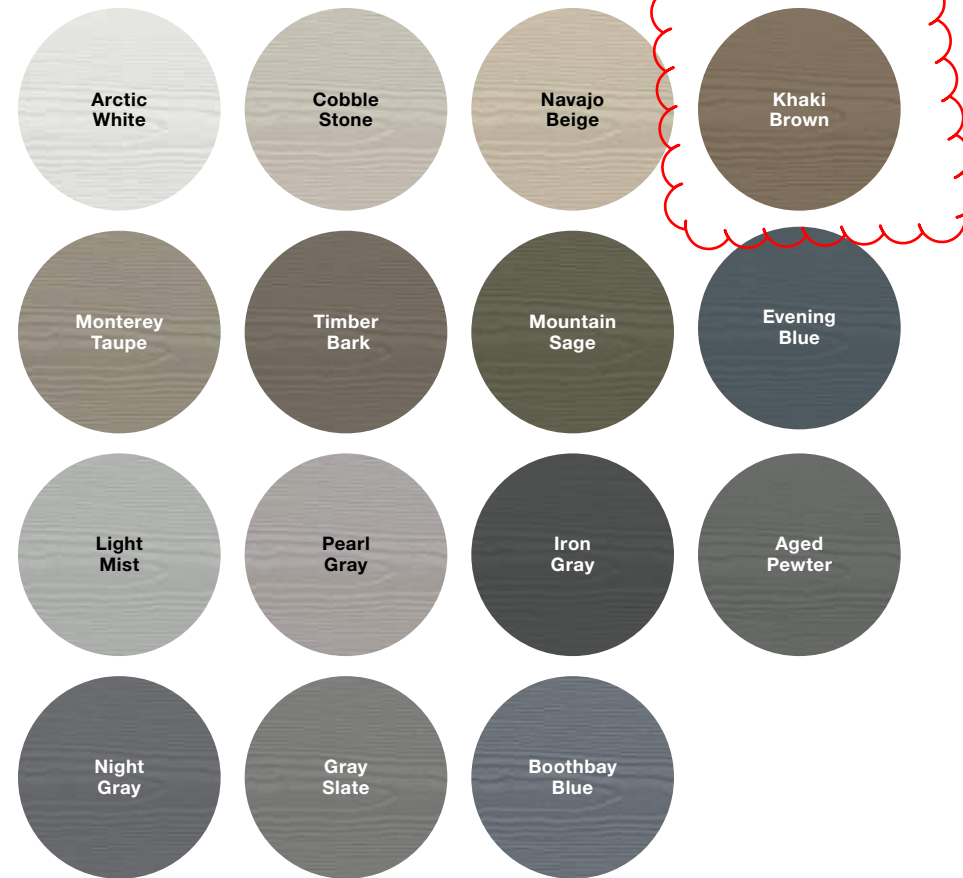
COLORPLUS® TECHNOLOGY

ColorPlus® Technology finishes combine distinct beauty and high performance in a way that no other finish does. They're the easiest way to choose a gorgeous pre-finished color for your house, and feel confident in its staying power.



Scan code to request a sample.

Hardie® Plank Color Offering



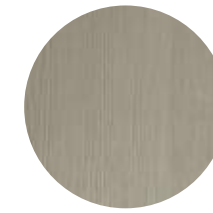
Hardie® Plank

Thickness 5/16 in
 Length 12 ft planks
 Select Cedarmill®
 Width 8.25 in
 Exposure 7 in



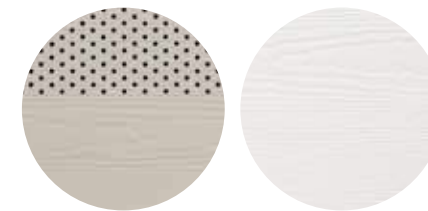
Hardie® Panel

Thickness 5/16 in
 Select Cedarmill®
 Size 4 ft x 10 ft



Hardie® Soffit

Thickness 1/4 in
 Vented and Non-Vented Select Cedarmill®
 Width 16 in
 Length 12 ft



Hardie® Panel & Trim Batten Color Offering



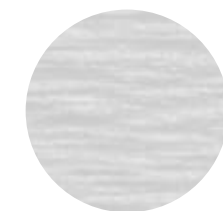
Hardie® Trim

Thickness .75 in
 4/4 Rustic Grain
 Width 3.5 in 5.5 in 7.25 in
 Length 12 ft



Batten Boards

Rustic Grain
 Thickness .75 in
 Width 2.5 in
 Length 12 ft

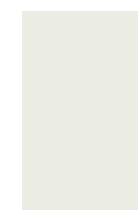


Hardie® Trim Color Offering



Arctic White Cobble Stone Timber Bark

Hardie® Soffit Color Offering



Arctic White

Colors shown are as accurate as printing methods will permit. Please see actual product sample for true color.



KING
KLINKER

King Klinker - America LLC

Shane Calmes (608) 406-9723
shane@kingklinker-america.com

Andrea Calmes (608) 518-8513
andrea@kingklinker-america.com

www.kingklinker-america.com

KING
KLINKER
THIN BRICK

Black Beauty - Imperial Size

ULTRA PREMIUM COLLECTION

The Ultra Premium collection is vertically extruded featuring quasi glazing in some colors and manufactured in Modular, Norman, King, Meridian, European Imperial and American Imperial sizes.

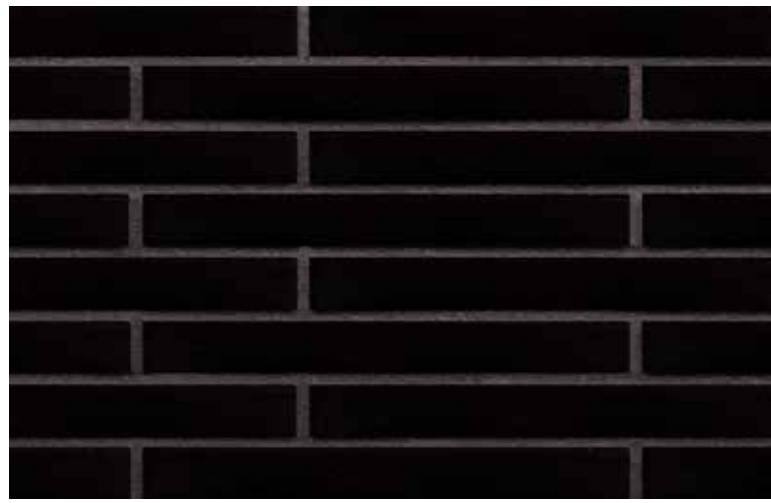


Black Beauty - US Express Ship



ULTRA PREMIUM COLLECTION

Refer to the website for stock information. www.kingklinker-america.com



Super Black - US Express Ship



Volcanic Black - US Express Ship



Black River



Black Diamond



Black Beauty - US Express Ship



Manganese - US Express Ship



Black Pearl



Ice Power



Obsidian Shadow - US Express Ship



Brick Capital - US Express Ship



Misty Morning



Urban Blend - US Express Ship



Castle Rock



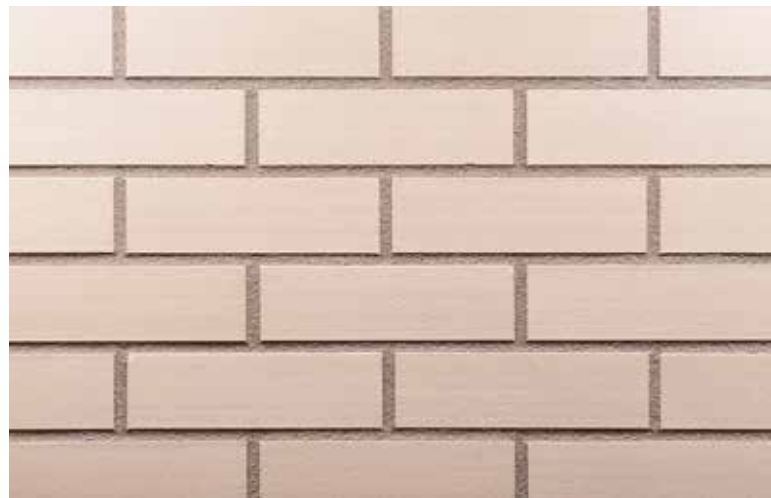
Argon Wall



Natural Brown



Pacific Pearl



Vanilla Sky



Valyria Stone - US Express Ship



Maghreb Fire



Red Zeppelin



Crimson Reflections



King Crimson



Tibetan Flame



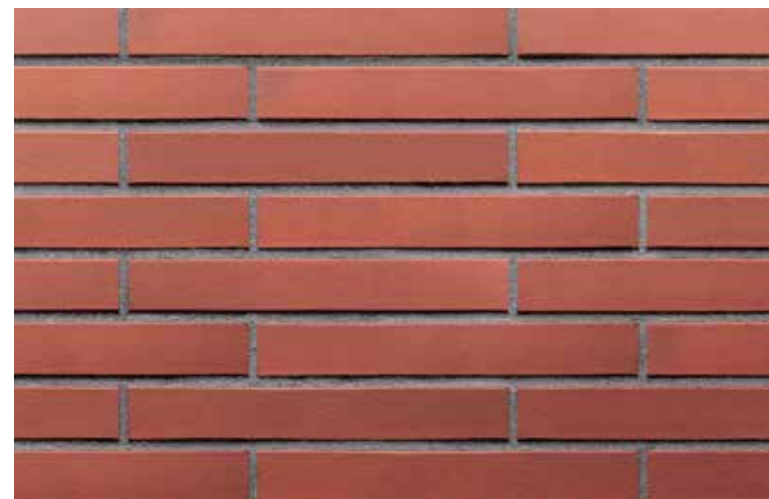
Old Amber - US Express Ship



Iron Clay



Castle Forge



Ruby Red



Wild Wine



Coral Star



Brick Republic



The Secret Garden

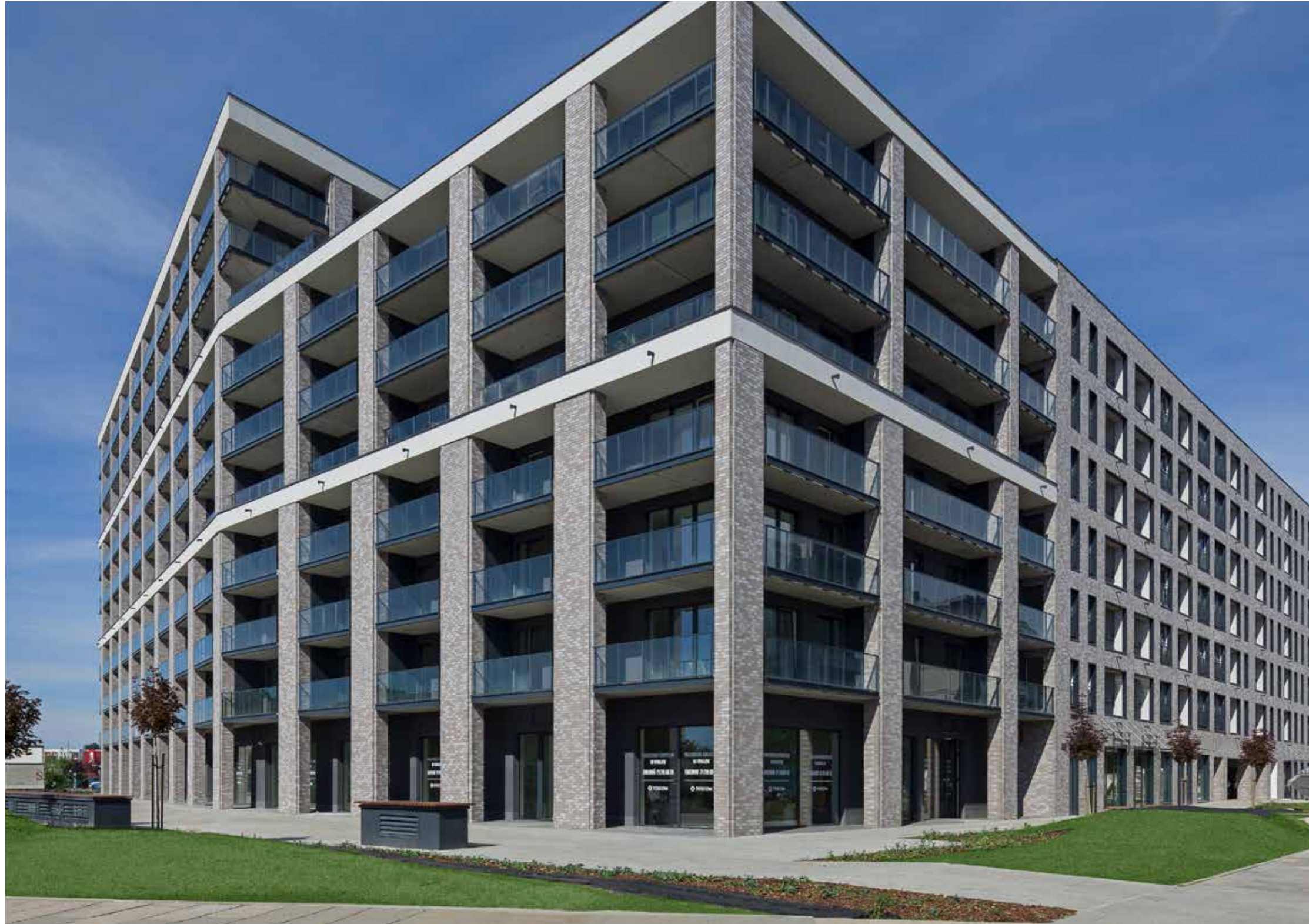


Sunny Shores

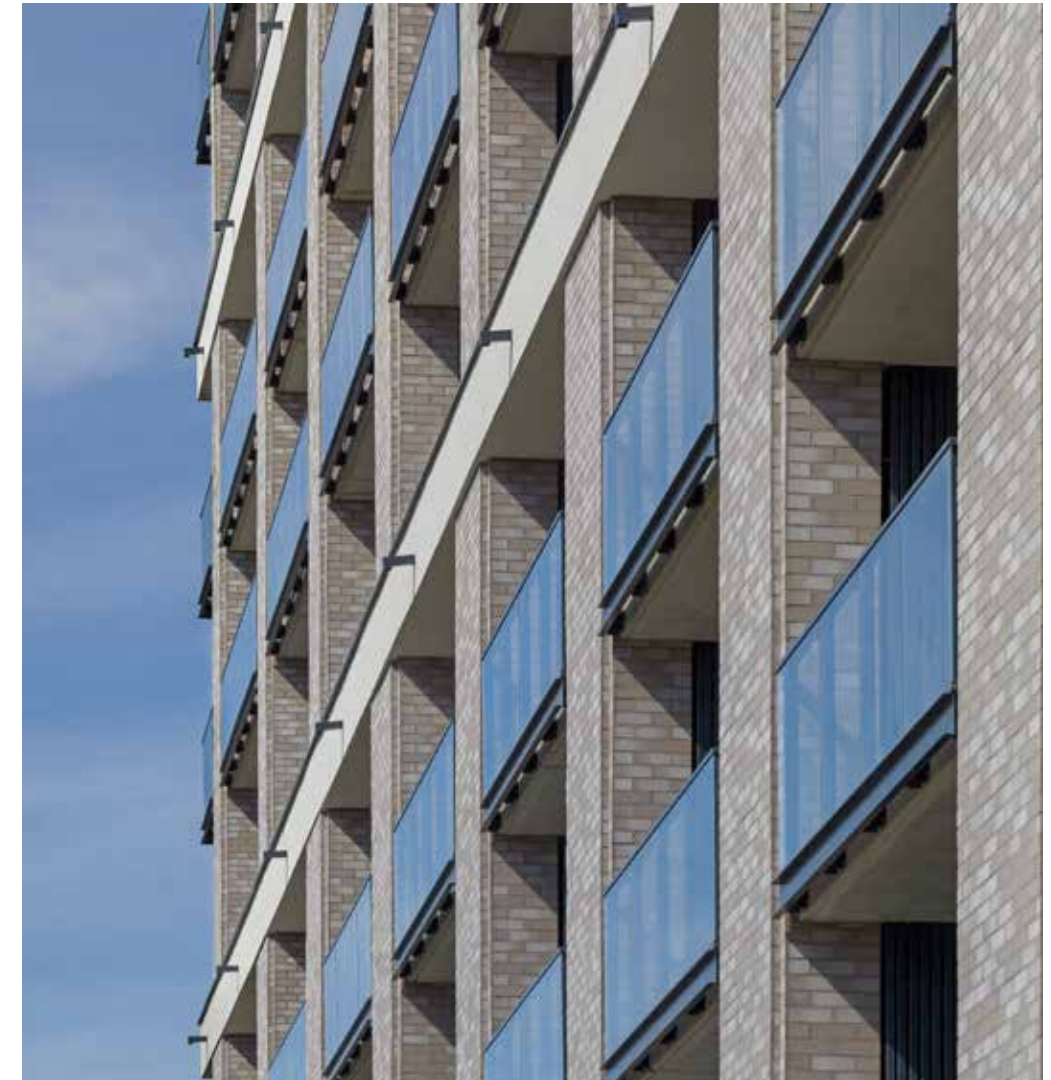


TRADITIONAL COLLECTION

The Traditional collection is horizontally extruded featuring multiple textures and engobes and manufactured in Modular and King sizes.



Winter Field - US Express Ship



TRADITIONAL COLLECTION

Refer to the website for stock information. www.kingklinker-america.com



Black Stone



Iron Rock



Platinum Skies



Roman Theatre



Night Sound



Earth Skin



Pearl Satin



Winter Field - US Express Ship



Silver Rose



Grey Satin



Glacier Cave



Snow Brick



White Night



Dance Umber



Silver Fox



Arctic Storm

TRADITIONAL COLLECTION



Vestero's Walls



Aztec Ghost



Summarian City



Sand Pepper



Dark Fortress



Mocha Blend



Desert Land



Kings Valley



Chocolate Tree



Dragon Hill



Industrial Revolution



Vintage Town



Blues Shadow



Brazilian Coffee



Irish Pub



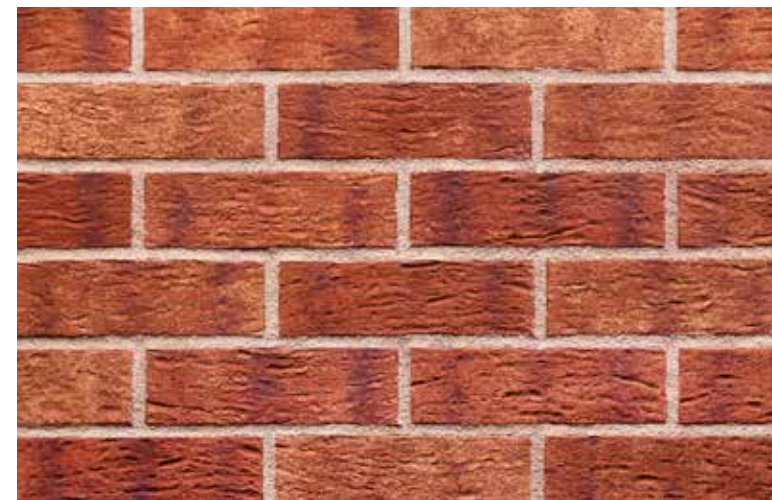
Street Life



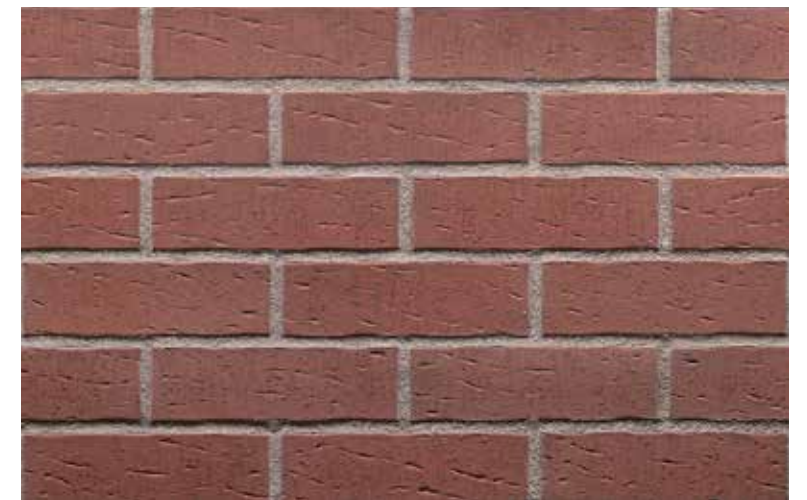
Rustic Rave - US Express Ship



Heart Brick



Purple Rain



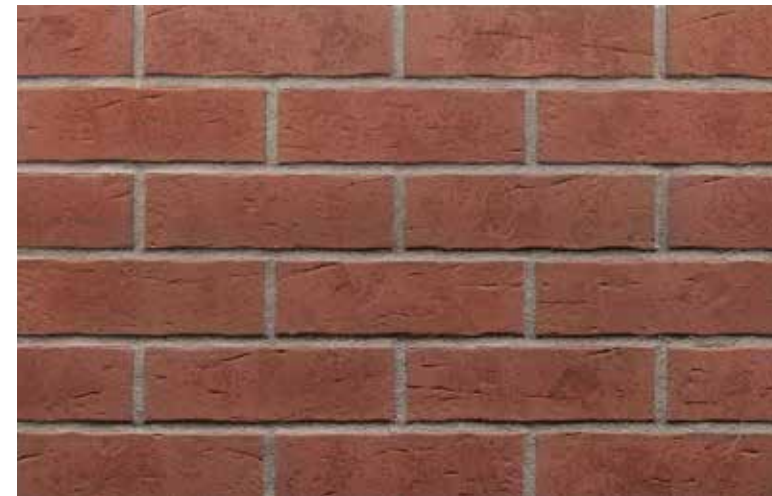
Brick Tower



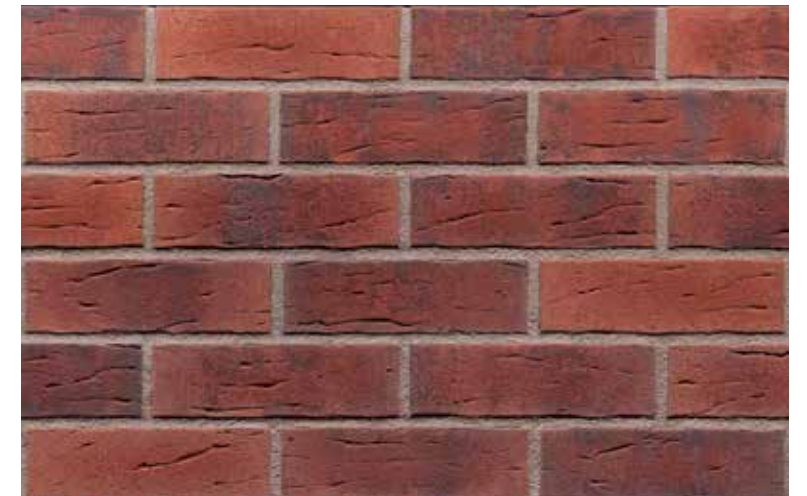
Red Square



Red Hot



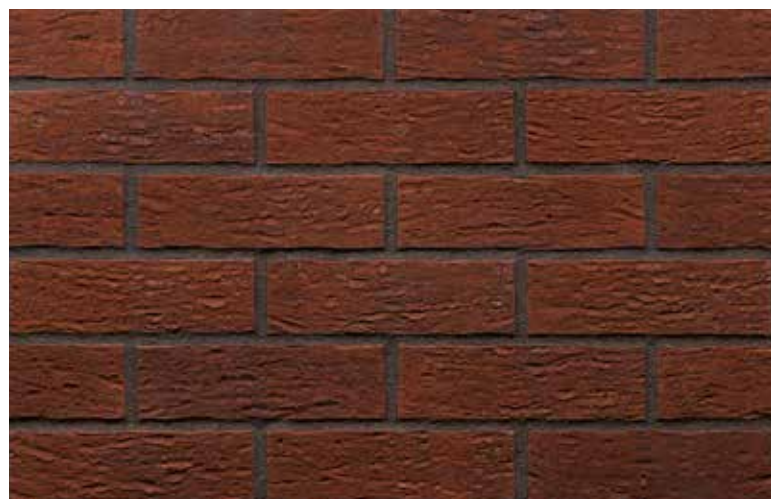
Bengali Sunrise



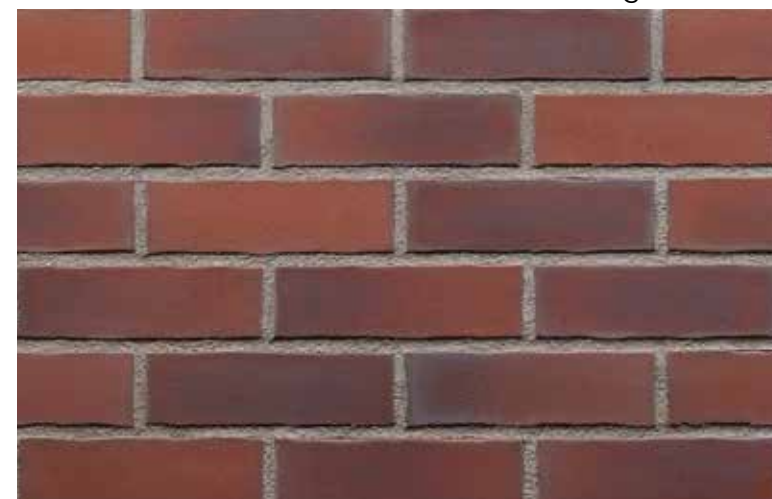
Aria Rustica



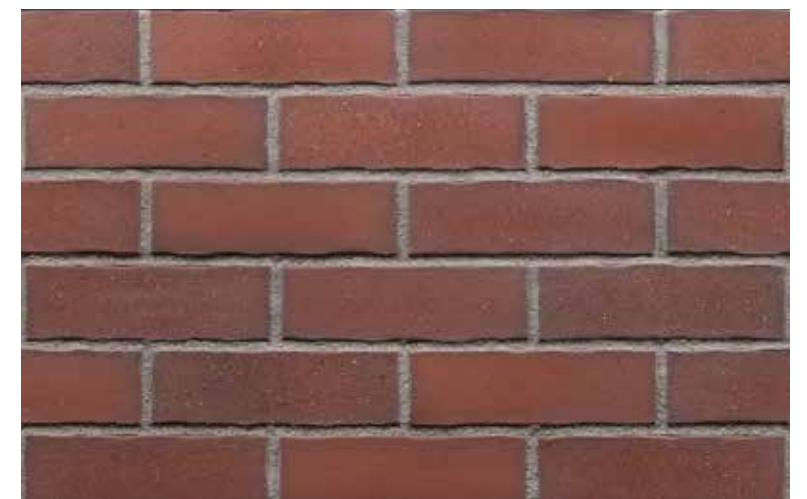
Old Factory - US Express Ship



Radiant Sunset



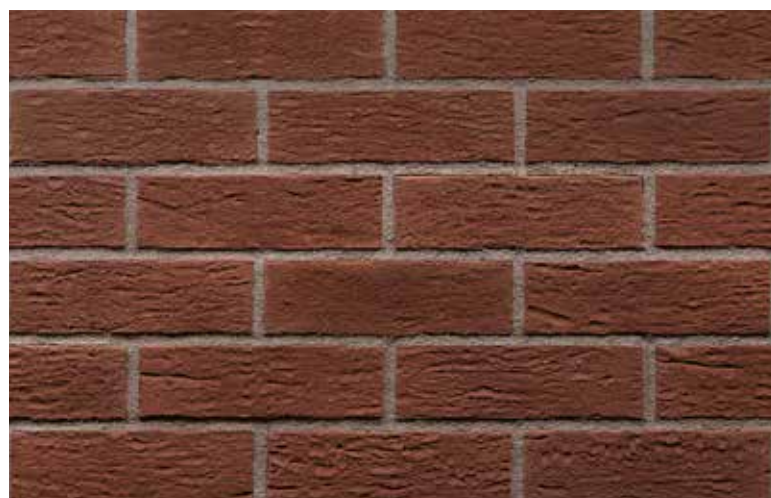
Gothic Smile



Clayland



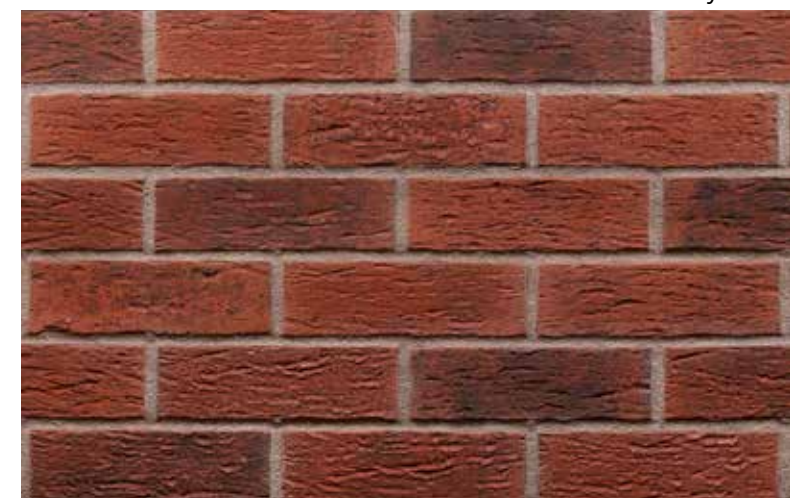
Brilliant Cedar



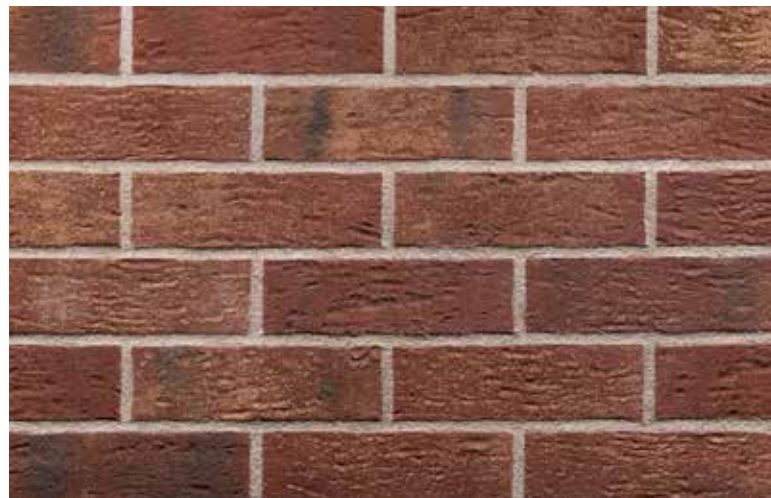
Manor House



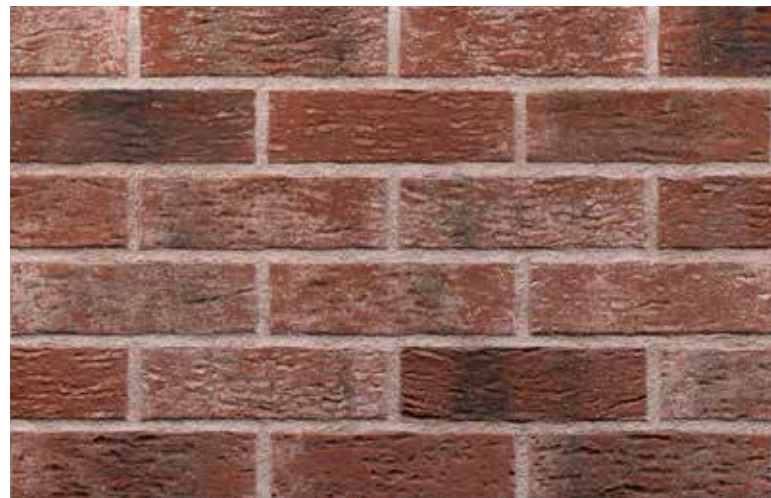
Wall Street



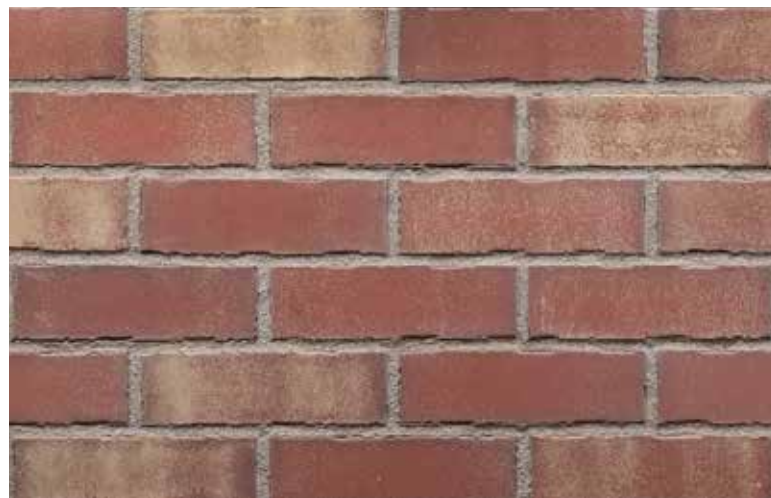
Bengali Night



Old House



Brick Street - US Express Ship



Neverland



Winter Palace



Alhambra Sun



Tower Bridge



TRADITIONAL COLLECTION



Old Factory - US Express Ship



ATAS International, Inc.

Sustainable Building Envelope Technology

PERIMETER EDGE & WATER CONTROL

Fascia • Water Control
Coping • Supplemental Edges

Wawa
Street, MD
Rapid-Lok Fascia in Brite Red
Box Gutter in Ascot White



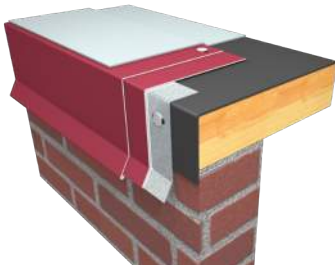
CONTENTS

Fascia	4
Coping	5
Water Control	6
Supplemental Edge Systems	7

ON THE COVER: Rapid-Lok Fascia | Slate Grey | Cetronia Ambulance

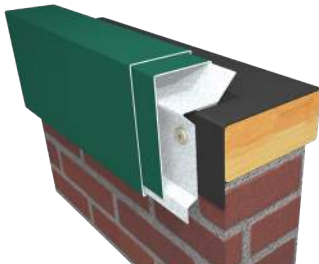
FASCIA

DRIP EDGE FASCIA



- Continuous 22 ga steel cleat with flange for easier installation and proper location
- Standard 90° roof flange or requested roof slope
- Four standard sizes - 3.25", 4.75", 6.25", 7.75"
(custom sizes available)

RAPID-LOK FASCIA



- ATAS' best fascia system that installs quickly on all single-ply membranes without strip-in plies or heat welding
- Continuous 20 ga retainer with snap-on cover
- Six standard sizes - 4", 5.5", 7", 8.5", 10", 11.5"
(custom sizes available)
- 30-year 150 mph windstorm warranty

EDGE-LOK 2 FASCIA



- Two-piece fascia system for EPDM, PVC and other flexible single-ply membranes
- Continuous 24 ga steel spring cleat with snap-on cover
- Five standard sizes - 5.75", 7.25", 8.75", 10.25", 11.75"
(custom sizes available)
- 20-year 120 mph windstorm warranty

GRAVEL STOP FASCIA



- Continuous 22 ga steel cleat with flange for easier installation and proper location
- Standard 0.75" cant or custom height as requested
- Four standard sizes - 4", 5.5", 7", 8.5"
(custom sizes available)

RAPID-LOK EXTRUDED FASCIA



- Performance and installation ease of Rapid-Lok with continuous extruded aluminum retainer
- Six standard sizes - 4", 5.5", 7", 8.5", 10", 11.5"
- Snap-on cover
- 30-year 150 mph windstorm warranty

EDGE-LOK 3 FASCIA



- Three-piece fascia system for Modified and BUR roof systems; also suited for heavy or stiff single-ply membrane systems
- Continuous 24 ga steel cant
- Continuous 22 ga steel cleat with snap-on cover accommodates thick roof membranes
- Five standard sizes - 6", 7.5", 9", 10.5", 12"
(custom sizes available)
- 20-year 120 mph windstorm warranty

COLOR CHART

Stock Colors | 70% PVDF Finish

Black (02)	Classic Bronze (01)	Medium Bronze (03)	Hartford Green (27)	Forest Green (11)	Teal (19)
Hemlock Green (30)	Patina Green (12)	Chocolate Brown (04)	Boysenberry (25)	Redwood (07)	Mission Red (08)
Sierra Tan (09)	Rawhide (15)	Concord Cream (05)	Almond (36)	Sandstone (06)	Regal Blue (18)
Slate Blue (21)	Siam Blue (14)	Rocky Grey (16)	Charcoal Grey (62)	Slate Grey (20)	Dove Grey (13)
		Oxide Series			
Ascot White (10)	Bone White (26)			Copper Brown (42)	Tarnished Red (47)

Premium Colors | 70% PVDF Finish

Antique Patina (24)	Brite Red (17)	Champagne (31)	Coppertone (23)	Silversmith (28)	Titanium (35)

Natural Metals

Clear Satin Anodized (70)	Dark Bronze Anodized (71)	55% Al-Zn Alloy Coated Steel with Acrylic Coating (97)	Copper (49)*	Classic Stainless Steel (40)*	Tin Matte Stainless Steel (41)*
Grey Zinc (50)*	Dark Zinc (51)*	Brown Zinc (89)*	Blue Zinc (94)*	Red Zinc (95)*	Green Zinc (96)*

Matte Colors

Matte Black (32)	Char Brown (29)	Thunder Grey (34)	Anchor Grey (37)	Ash Grey (33)	Almond (36)

For additional color offerings, visit www.atas.com/colors. For current SRI values and agency listings refer to our Color and Reference Guide: www.atas.com/sri.

*Special material. Pricing and availability dependent upon project specifics. Color chips available upon request.

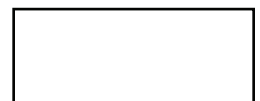
ATAS International, Inc.

Allentown, PA | Mesa, AZ | University Park, IL

www.atas.com | 800.468.1441

*Subject to minimum quantities and extended lead time. Inquire for material and panel width availability. Colors are as close to the actual colors as modern printing allows. Exact color chips on request; this is a requirement for all premium colors. If you have requirements or preference for colors or finishes other than shown, contact ATAS. Color availability varies by material, gauge and profile. ATAS is not responsible for colors selected from color chart. ATAS reserves the right to modify, eliminate and/or change its products without prior notification. Contact ATAS for more information. Every project is different. To the full extent permissible by law, ATAS disclaims all warranties, express or implied, including, but not limited to, implied warranties of merchantability and fitness for a particular purpose. A qualified engineer, architect or contractor should review suitability of use. Please visit www.atas.com for the most up-to-date information.

© 2021 ATAS International, Inc. LRD0921 LAT965





RIESLING (GOLDEN SKY AMV)



RIESLING



CRYSTAL WHITE



CRYSTAL WHITE (MANTEL + HEARTH)



TRACK SYSTEM

- ◆ Structural steel is not required.
- ◆ Track system is attached directly to studs.
- ◆ Allows for fine adjustment when positioning stone during installation.
- ◆ Engineered to carry wind loads and stand up under seismic conditions.

COLORS



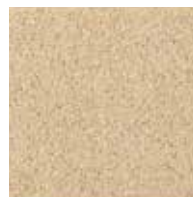
BUFFSTONE



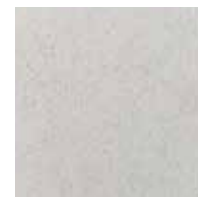
CHARLOTTE TAN



CLAY



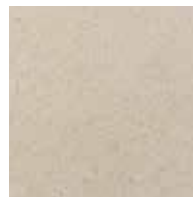
CREME BUFF



CRYSTAL WHITE



LIGHT GRAY



RIESLING



SMOKEHOUSE



STARBUCK



LIFETIME WARRANTY

All of our RockCast products go through the same rigorous product testing and are backed with warranties to support our guarantees for quality.