



# **I-35 E & Corporate Drive Updates**

---

# Corporate Drive Segments 2&3



# Corporate Drive Segments 2&3

---

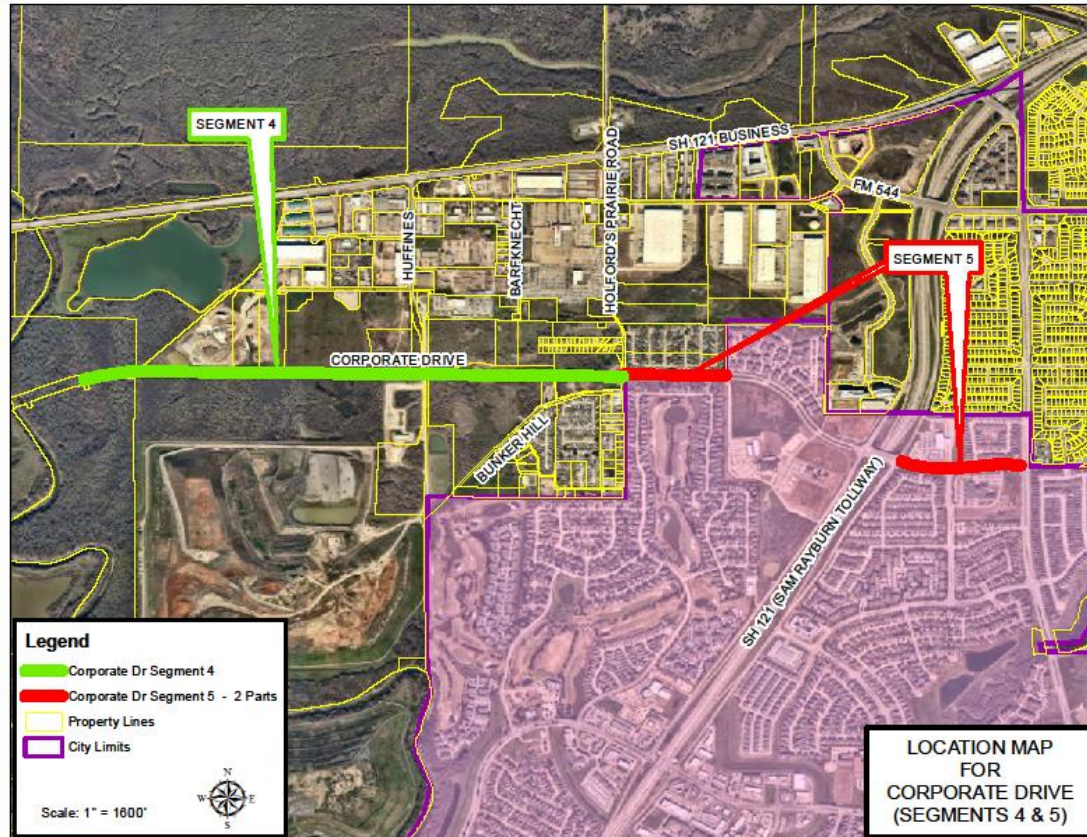
- **Cost:** \$43,059,500
- **Began Construction:** February 2024
- **Estimated Completion:** August 2026
- **Current Status:** Clearing and roadway fill/embankment is nearly complete. Water main is complete except the portion that will be connected to the Elm Fork bridge. Storm sewer is complete. Small bridge is complete except rails, currently working on the the Elm Fork Trinity River bridge.

# Corporate Drive Segments 2&3

---



# Corporate Drive Segments 4&5



# Corporate Drive Segments 4&5

---

- **Cost:** \$29,758,039
- **Began Construction:** June 2024
- **Estimated Completion:** December 2027
- **Current Status:** The contractor has cleared most of the right of way and are working on roadway fill & embankment. Currently installing storm drain and water main improvements.



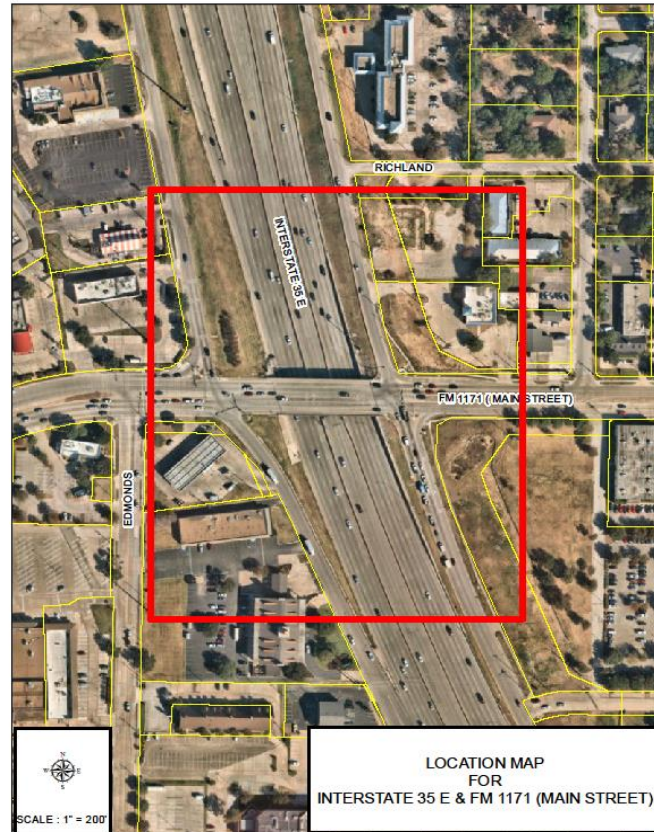
# Corporate Drive Segments 4&5

---



# I-35 @ Main Street

---



# I-35 @ Main Street

---

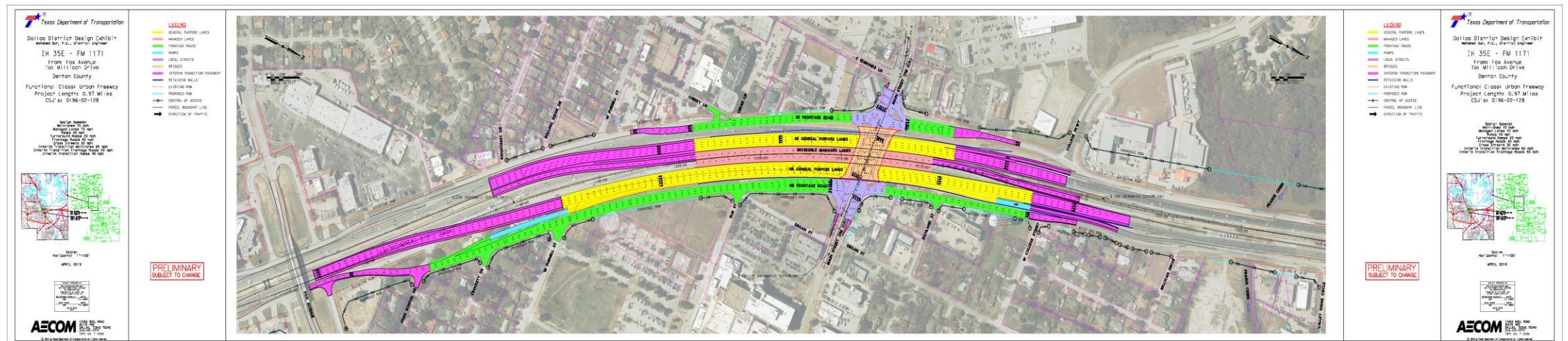
- Began Construction in June 2023
- Estimated Completion Date is November 2026
- The City has paid TxDOT for aesthetic improvements.
- Current work includes construction of retaining walls on the north side of the bridge, drill shafts for the new widened bridge and continued paving & drainage work on the frontage roads.

# I-35 at Main Street

---



## 11



# I-35 at Main Street

---



# I-35 at Main Street

---

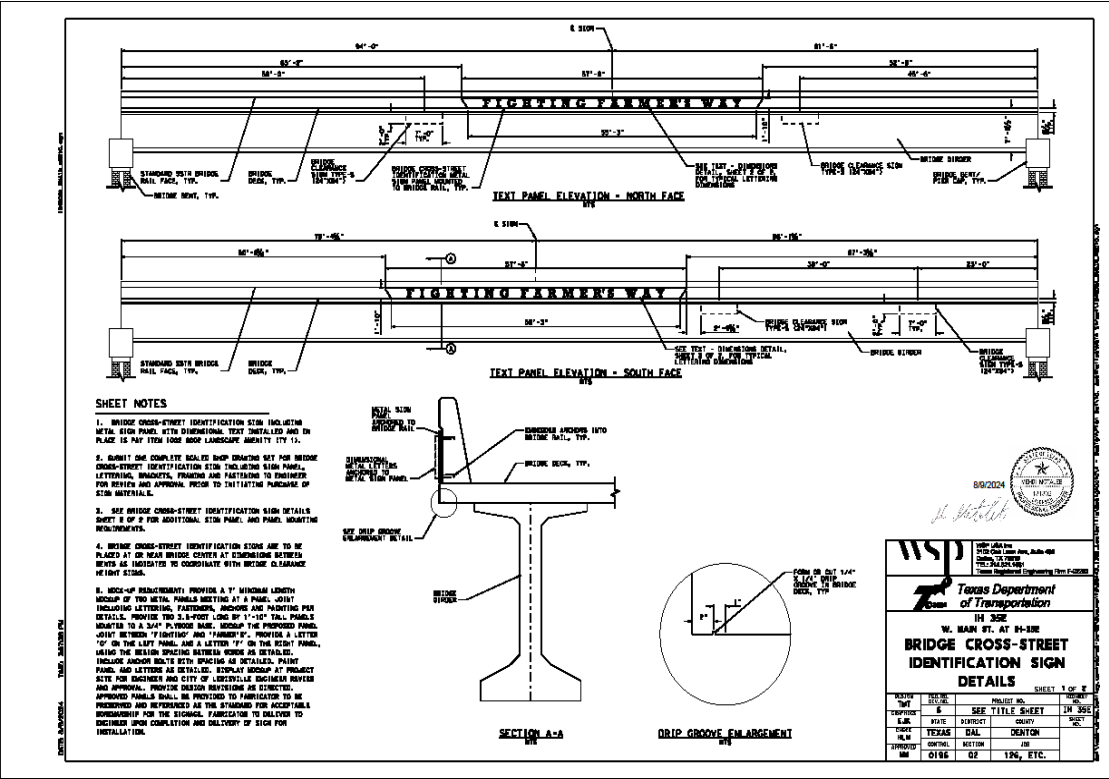


# I-35 at Main Street

---



# I-35 at Main Street – Fighting Farmers Way



# I-35 at Main Street

## Old Town Character Zone – West Main Street Overpass

Character Sketch

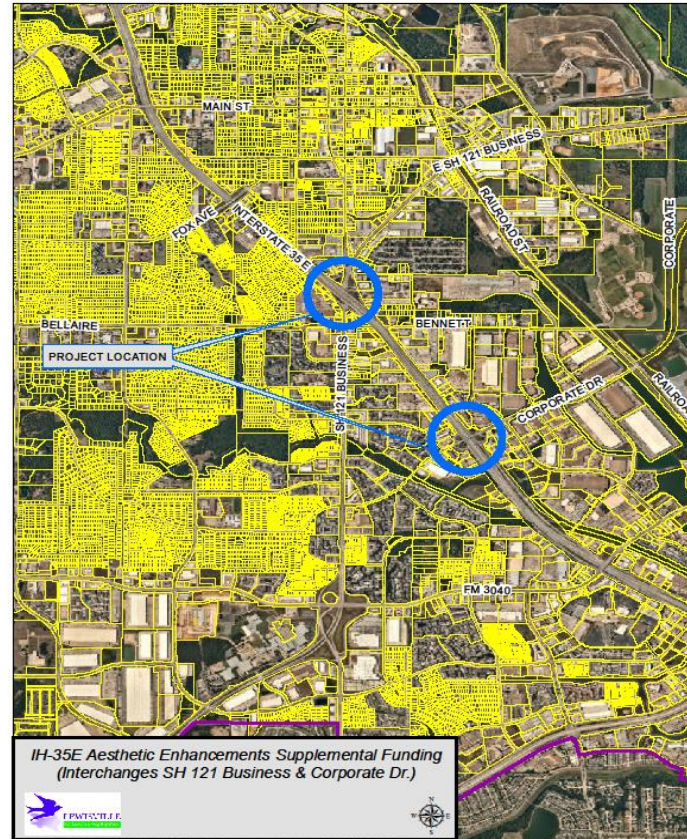
Application of the Old Town design elements to the walkway along West Main Street interchange - looking to the east



Application of the Old Town design elements to the walkway along West Main Street interchange - looking to the east

OLD TOWN

# I-35 @ Business 121 & Corporate Drive

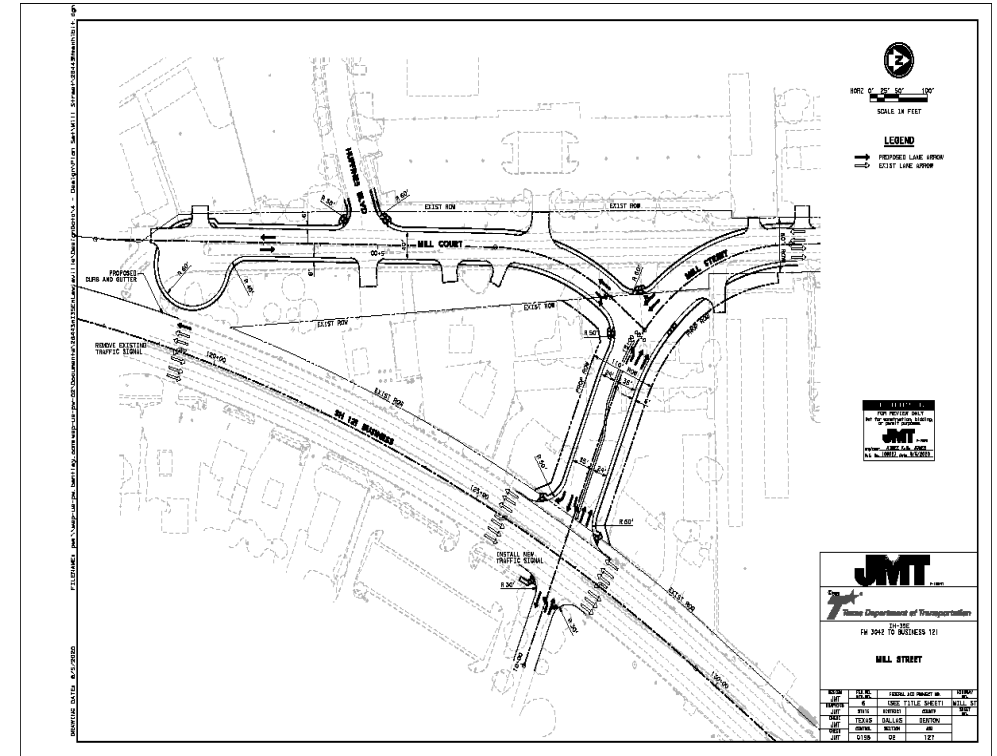
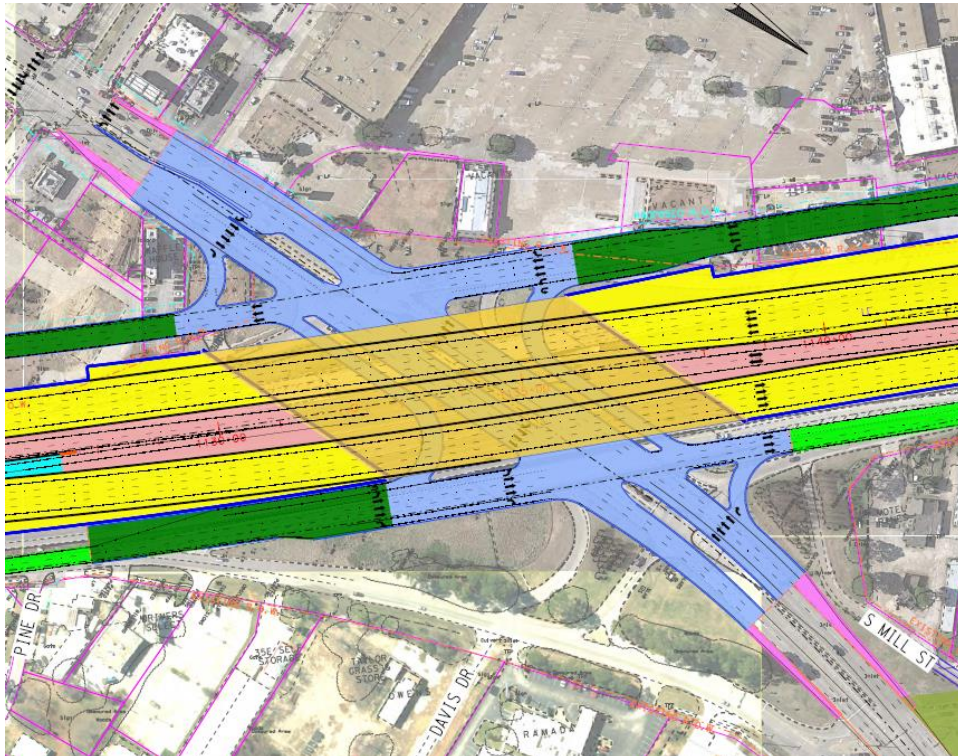


# I-35 @ Business 121 & Corporate Drive

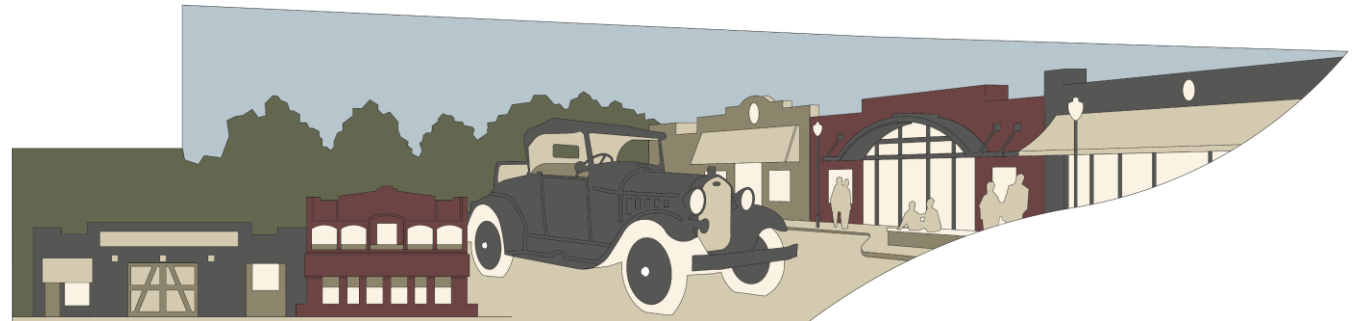
---

- Project to let in January 2025
- Estimated 4-year construction schedule. (Est. late 2029 completion)
- The City has paid TxDOT for aesthetic improvements.

# I-35 at Business 121

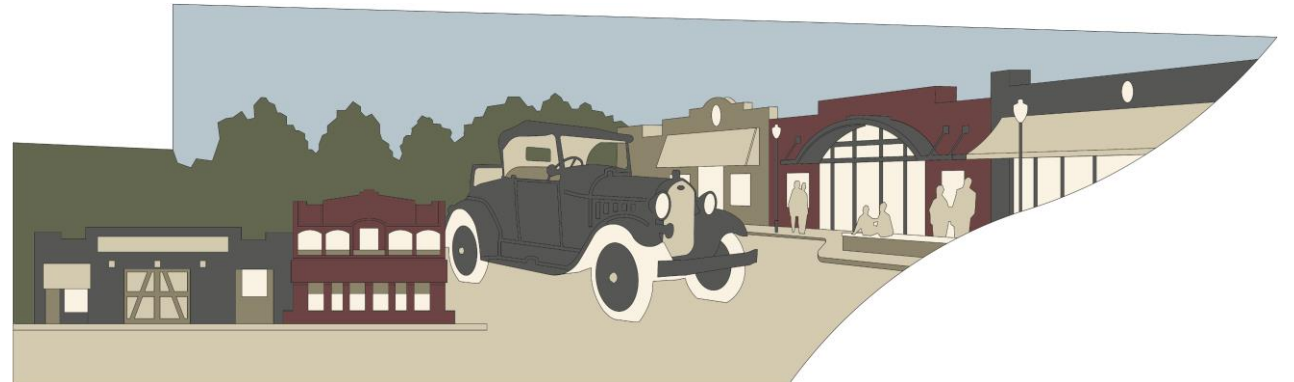


# I-35 at Business 121



# I-35 at Business 121

---



# I-35 at Business 121

## Old Town Character Zone – Business SH- 121 Underpass

### Character Sketch

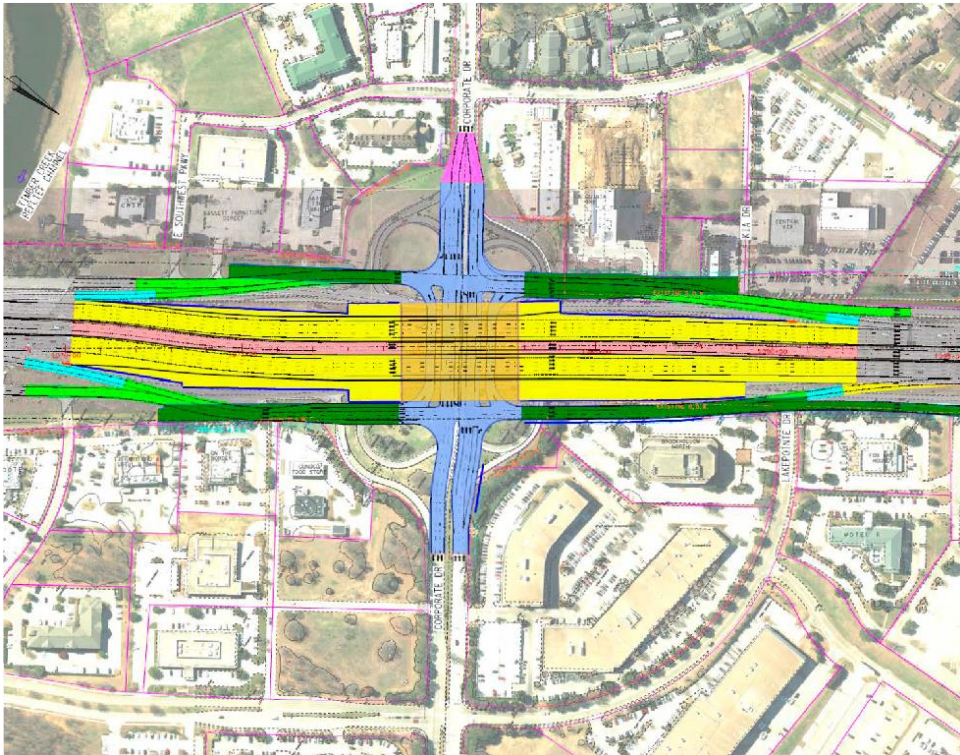
The following sketch illustrates application of the Old Town design elements to the east end of the Business SH-121 Interchange.



Parsons Brinckerhoff 33

OLD TOWN

# I-35 at Corporate Drive



## Parks Character Zone – East Corporate Drive

### Character Sketch

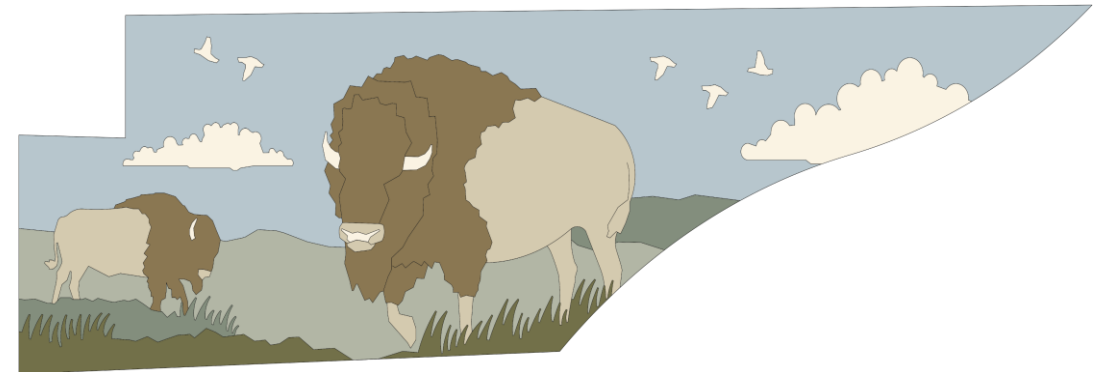
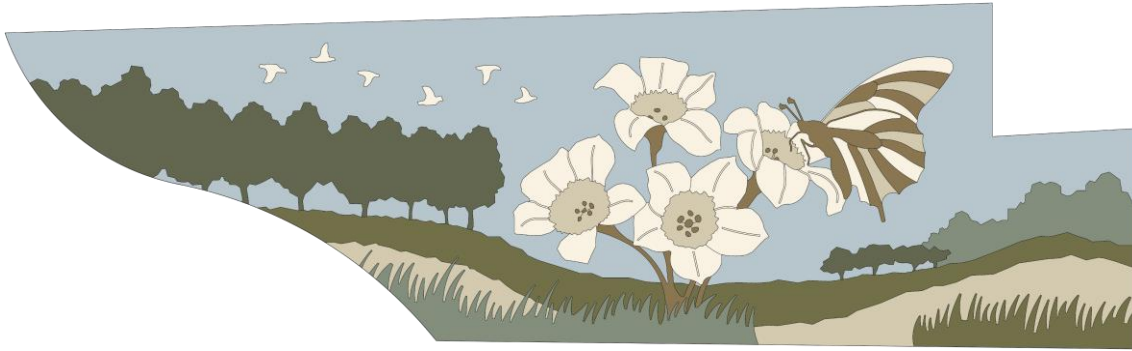
The following sketch provides general illustration of how the various elements of the Parks Character zone are intended to be used at East Corporate Parkway. View looking west.



Parsons Brinckerhoff 21

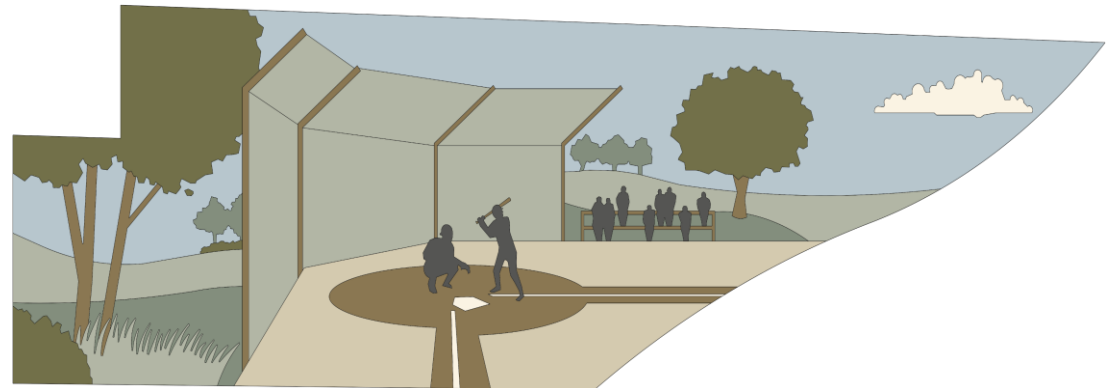
# I-35 at Corporate Drive

---



# I-35 at Corporate Drive

---



# Questions



---