

Item No. 4 – Consideration a Recommendation for an Amendment to Section 15-35, Maximum Speed Limits on Specific Streets, of the Lewisville City Code to Establish a Speed Limit of 50 mph on State Highway 121 Business from the Sam Rayburn Tollway to 370 feet south of Valley Ridge Boulevard and Make a Recommendation to the City Council Regarding the Amendment.

☒ Action

☐ Possible Action

☐ Informational Item

Presenter: Jason Walker

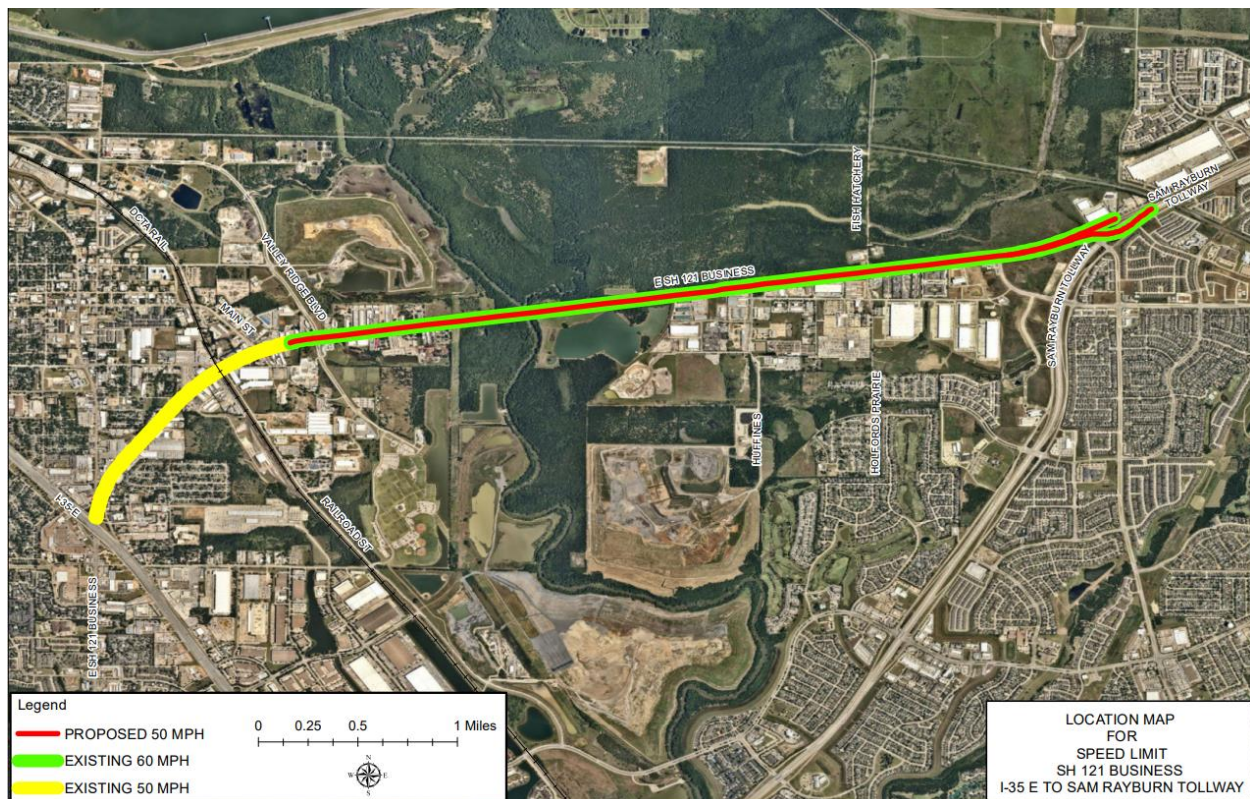
Background:

The Texas Department of Transportation conducted and submitted a speed study for Business 121 from the Sam Rayburn Tollway to I-35 E in Lewisville. The Study confirms that the existing speed limits from 370 feet south of Valley Ridge Boulevard to I-35 are appropriate. (See attached speed study) The study recommends altering the speed limit for State Highway 121 business from the Sam Rayburn Tollway to 370 feet south of Valley Ridge Boulevard from 60 MPH to 50 MPH. The City code requires amendment to reflect the new speed limits in order for the Lewisville Police Department to be able to enforce the revised speed on the State Highway 121 Business.

Analysis:

The Texas Department of Transportation (TxDOT) establishes the prima facie reasonable and prudent speed limits for on-system roadways. The Texas Transportation Code empowers the Texas Transportation Commission to alter those prima facie speed limits on any part of the state highway system as determined from the results of an engineering and traffic study.

TxDOT conducted a speed study on the State Highway 121 business from the Sam Rayburn Tollway to I-35. The speed limit for the entire stretch of State Highway 121 business recommend by the speed study is illustrated in the map below.



The current speed limit and the proposed speed limit in the segment of Business 121 between the Sam Rayburn Tollway and 370 feet south of Valley Ridge Boulevard per the study are as follows:

- Existing prevailing Speed Limit: 60 mph
- Proposed Speed Limit Recommended by the Traffic Study: 50 mph

Factors to determine posted speed limit:

TxDOT used 85th percentile speeds to determine the recommended speed limit. The TxDOT speed study is included as an attachment.

All signs will be furnished and installed by TXDOT.

Recommendation:

Staff requests the Transportation Board recommend to the City Council amending section 15-35 of the Lewisville City Code to establish a speed limit of 50 mph on State Highway 121 Business from the Sam Rayburn Tollway to 370 feet South of Valley Ridge Blvd.