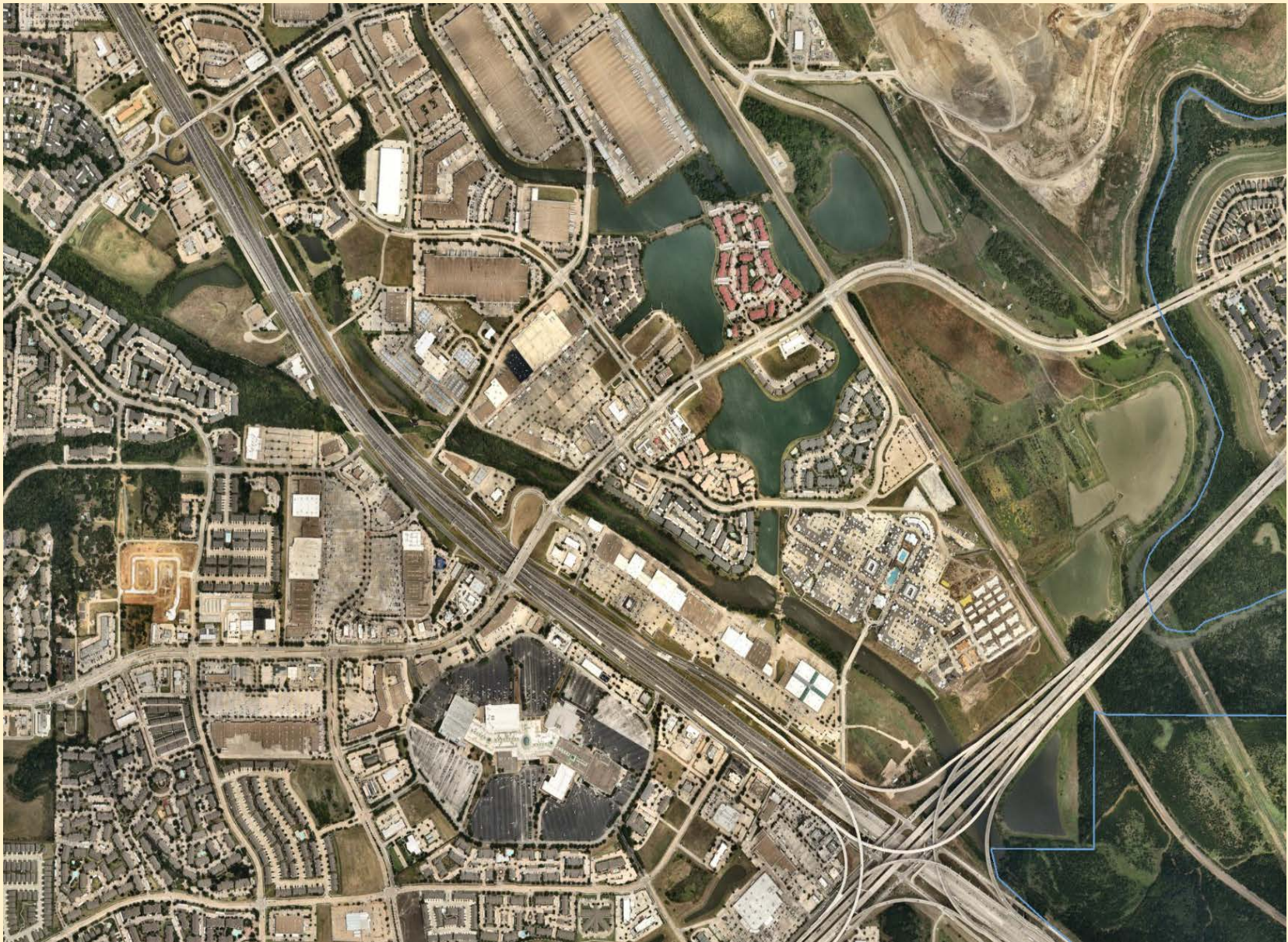




Future Ownership of Timber Creek Property

August 6, 2018
City Council Workshop



Aerial of Timber Creek





Hebron 121 Original Concepts for Timber
Creek Amenities and Improvements





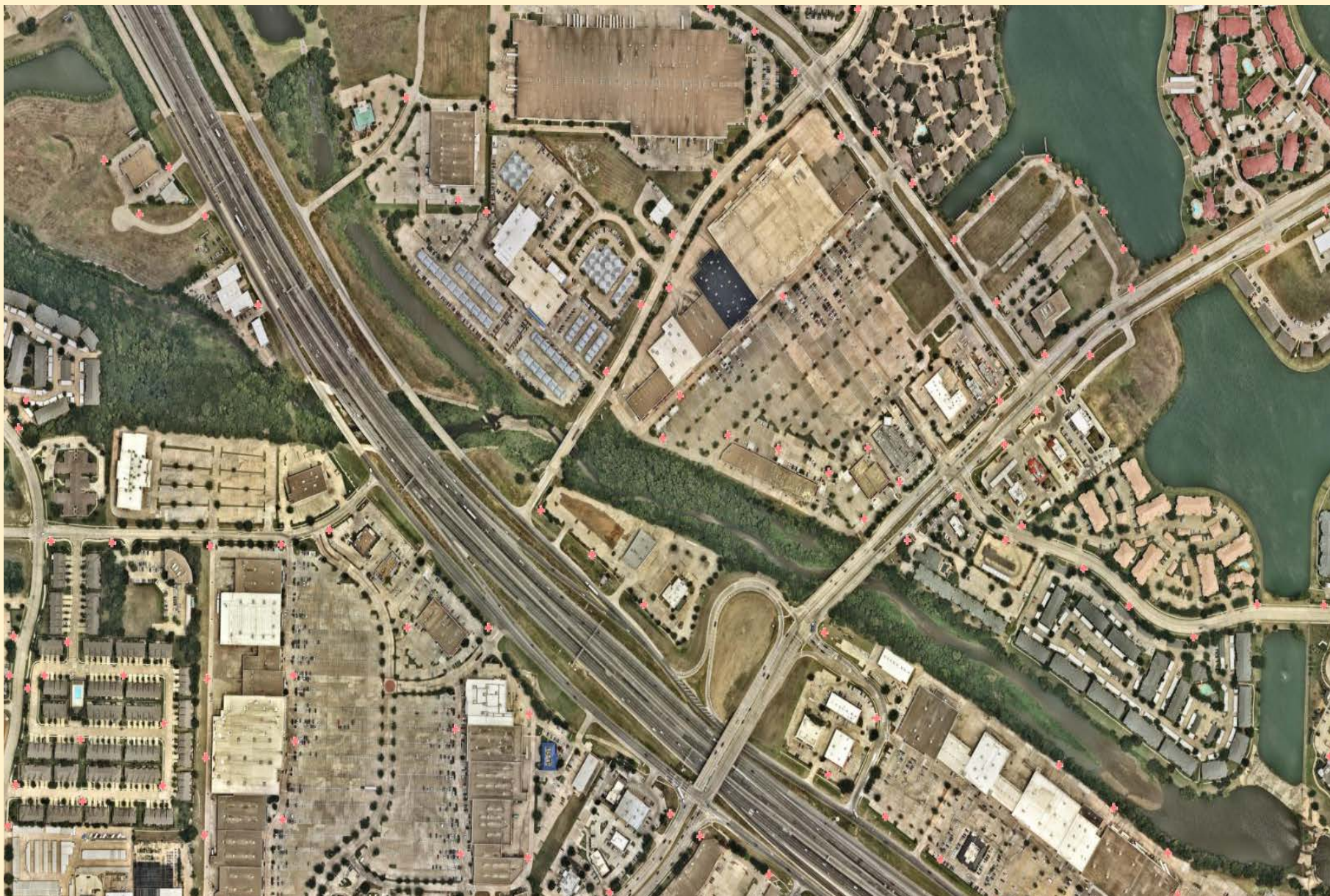
Hebron 121 Original Concepts for Timber
Creek Amenities and Improvements





TIRZ No. 2





Aerial Showing Trees & Silting





I-35 View of Target Center



I-35 View of Target Center





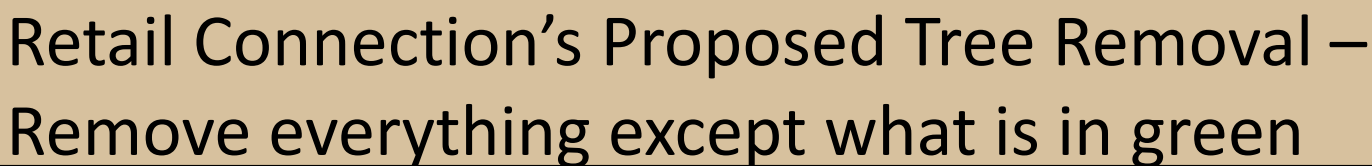
View of Target Center from Hebron

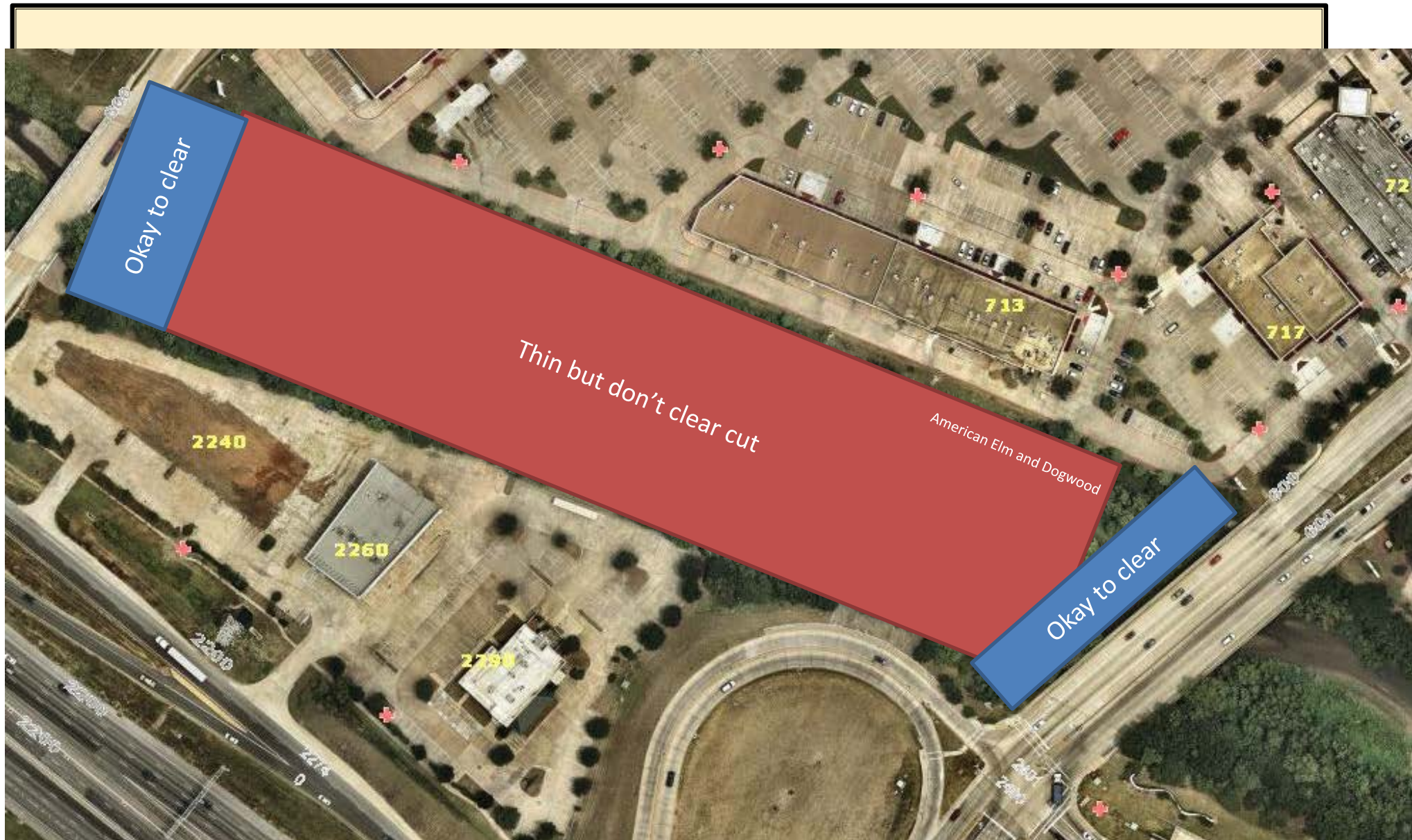




Area proposed to be cleared

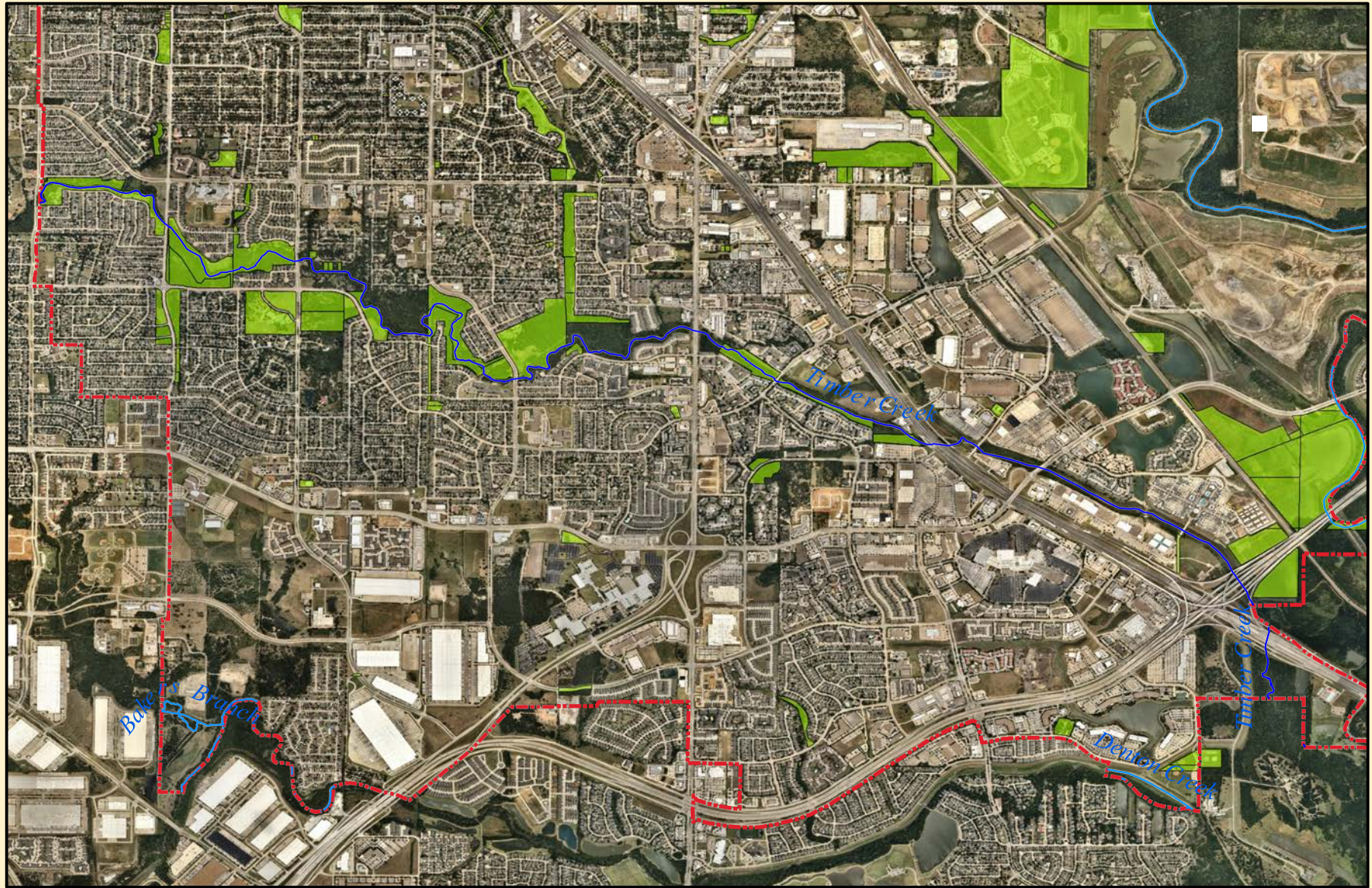






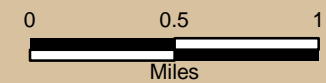
Proposed Plan if City Owns





City Owned Properties

Timber Creek

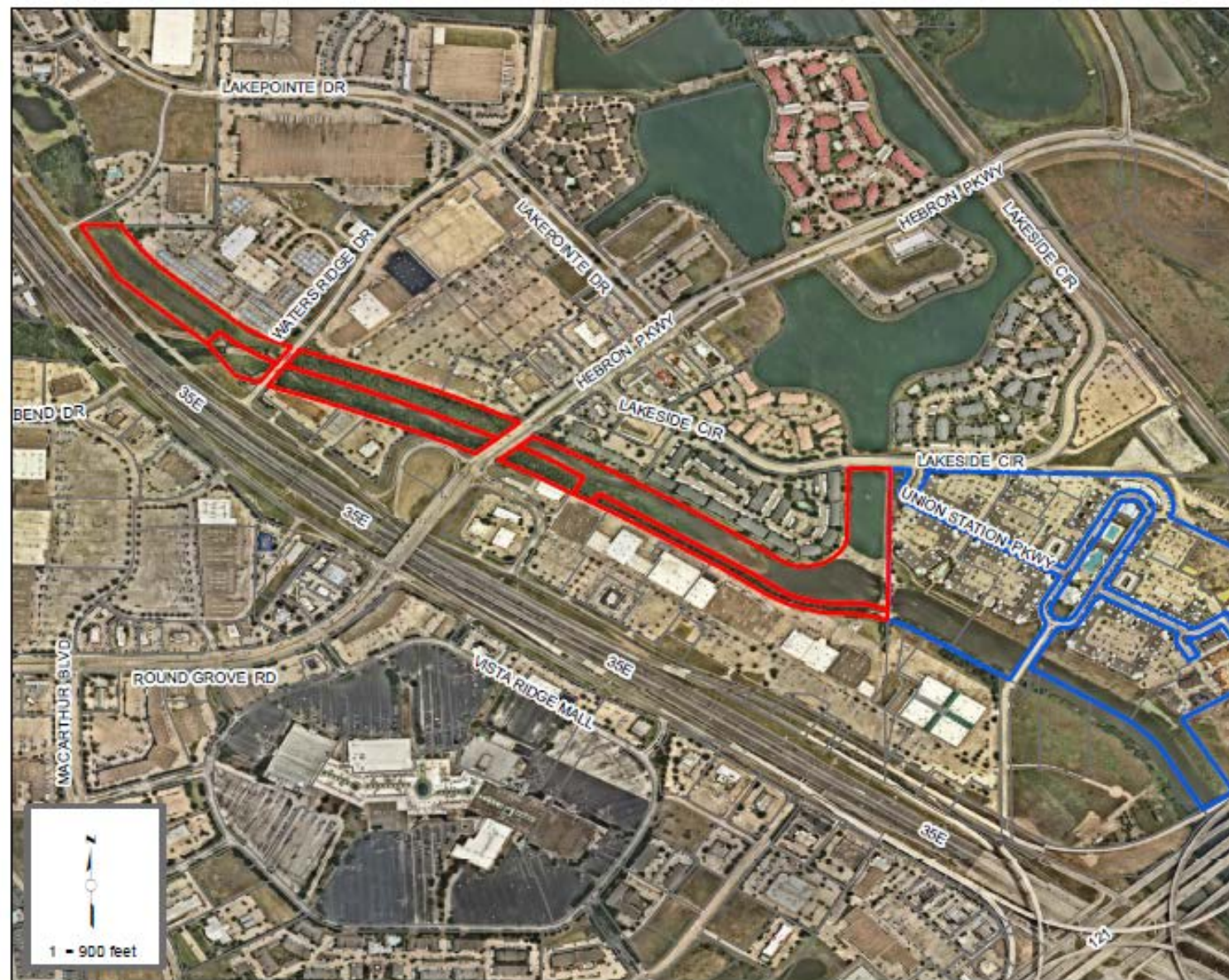


Existing Storm Water Utility 10-15 year plan

1. Timber Creek Acres Buy-out - City Match on Federal Grant (\$200,000)
2. Concrete Lined Channel Near Metro Park Circle Plus East Purnell Drainage Improvements (\$1,200,000, construction only, plans complete, bid ready)
3. Timber Creek Channel Improvements (Erosion) - Valley Parkway to Edmonds Lane (Private/Public) – (\$6,250,000)
4. Holford's Prairie Bridge and Channel Improvements, possible property buy-outs (\$2,000,000)
5. Fish Hatchery Road Bridge Repair (250,000)
6. High School Drive and Mill Street Improvements (Channel and Culvert Crossings) (\$500,000)
7. Lewisville Valley 2 - Juniper and Laramie Storm Sewer Capacity – (\$950,000)
8. Channel Improvements East of Mill Street to Sycamore Street (\$650,000)
9. McKenzie Street to Purnell Street and along Sycamore Street Channel Improvements (\$500,000)
10. Old Town Drainage - Phase III (b) Improvements – (\$2,500,000)
11. Timber Creek Channel Improvements (Erosion) - Edmonds Lane to SH 121 Bus. (Public/Private) - \$4,000,000
12. Valley Vista 1 - Camelot and Little Den Storm Sewer Capacity - \$650,000
13. Milestone Creek - Channel Improvements (Private) – (\$900,000)
14. Channel along KCS ROW - West of McGee Lane to I-35 – (\$650,000)
15. Bennett Lane Culvert Improvements (\$500,000)
16. Channel Improvements between DCTA Maint. Facility and Bennett Lane (Private) (\$1,000,000)**
17. **Timber Creek Channel Dredging East of I-35 (Private) – (\$7,000,000)**
18. **Timber Creek Channel Improvements (Erosion) - SH 121 Bus to I-35E (Public/Private) - \$4,000,000**

Storm Water Projects





Parcel Map

Recommendation & Discussion

