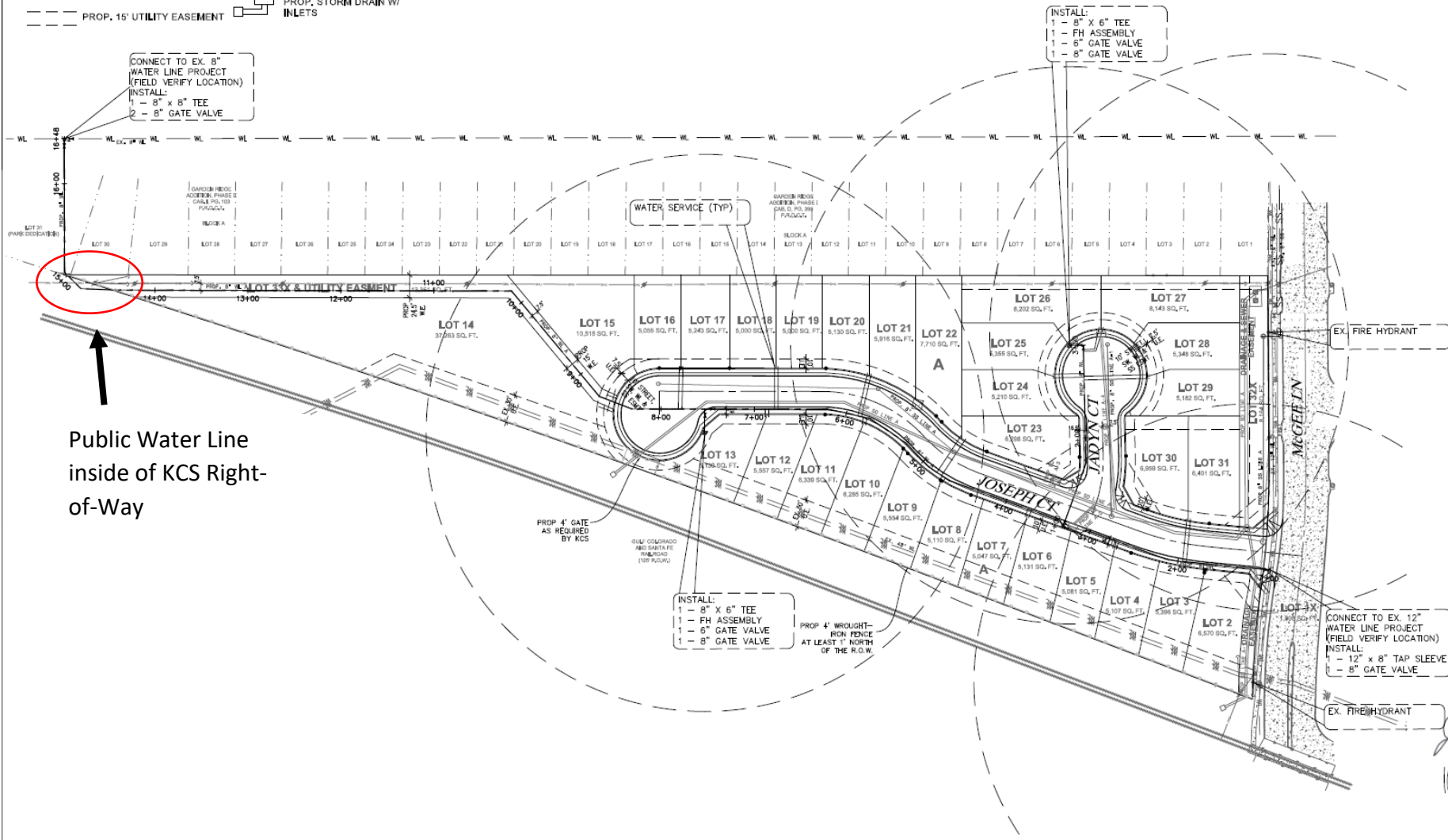
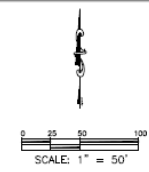


LEGEND

- PROP. WATER LINE W/
PROP. FIRE HYDRANT
- PROP. SAN. SEWER LINE W/
SEWER ACCESS MANHOLE
- PROP. GATE VALVE
- PROP. INDIV. WATER SERVICE
W/ 1" DOM. WATER METER
- PROP. 15' UTILITY EASEMENT
- EXISTING WATER LINE
W/ EX. FH & GATE VALVE
- EXISTING SANITARY
SEWER LINE
- EXISTING STORM DRAIN
LINE
- PROP. STORM DRAIN W/
INLETS

30 - 3" WATER SERVICES
30 - 4" SEWER SERVICES



Public Water Line
inside of KCS Right-
of-Way

3102 MAPLE AVE, STE. 400
DALLAS, TX 75201
972-554-1100 (Office)
1-866-682-8129 (Fax)
TXPE Firm #: 9723

CIVIL POINT
ENGINEERS

PROJECT NAME: **GREAT LAKES CROSSING**
LEWISVILLE, TEXAS

SHEET TITLE: **WATER PLAN - OVERALL**

DATE: 9-29-18
SCALE: 1" = 50'
SHEET: **3**
OF: **25**