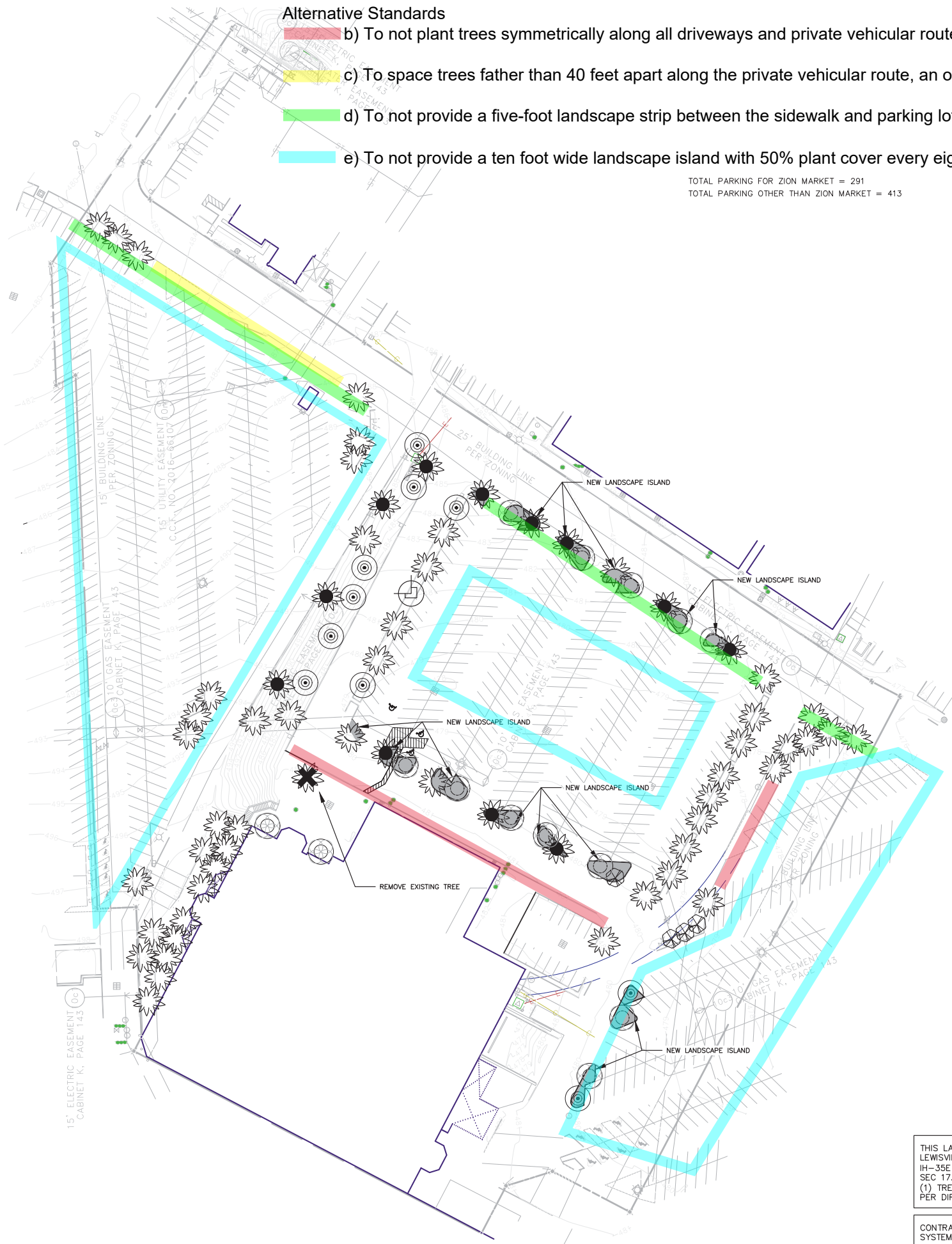


PROJECT MANAGER: CLAUDE FRIEDLANDER  
DESIGNER: JEFFREY L. ARCHER  
DATE: 2/14/2019 2:08 PM BY: JLM, RVN  
TITLED BOOK INFORMATION: LAYOUT - PLOTTED 2/14/2019 2:08 PM BY: JLM, RVN



Alternative Standards

- b) To not plant trees symmetrically along all driveways and private vehicular routes. [Section 17.5-4(d)(1)a.]
- c) To space trees father than 40 feet apart along the private vehicular route, an over 600% increase [Section 17.5-4(d)(1)d.]
- d) To not provide a five-foot landscape strip between the sidewalk and parking lot with shrub row [Section 17.5-4(d)(1)g.)
- e) To not provide a ten foot wide landscape island with 50% plant cover every eight spaces, a 74 percent decrease [Section 17.5-4(d)(1)h.]

TOTAL PARKING FOR ZION MARKET = 291  
TOTAL PARKING OTHER THAN ZION MARKET = 413

LANDSCAPE TABULATIONS		
LANDSCAPE FEATURE	REQUIRED	PROVIDED
CANOPY TREES.	AMENITY ZONE / PEDESTRIAN ALL OTHER STREET / MIN 2' / 40' SPACING MAX	PROVIDED
TREE PRESERVATION AND LANDSCAPE MAINTENANCE PER LDR	REQUIRED	COMPLY
PARKING LOT FRONTAGE ON IH-35E	NA	NA
PARKING LOT ALONG OTHER STREET	5' LANDSCAPE BUFFER OR 36" MASONRY WALL	LANDSCAPE BUFFER PARTIALLY PROVIDED
PARKING LOT ELEMENT	ONE CANOPY TREE / 8 PARKING	PARTIALLY PROVIDED
PARKING LOT / TREE RATIO	ONE CANOPY TREE / 8 PARKING	704 / 88 = 8 52 EXISTING + 36 PROPOSED = 88
36' LF ALONG RING ROAD	885 LF / 30 = 29.5 820 LF / 30 = 17.3 (FOR ZION MARKER FRONTAGE)	21 TREES PROVIDED 17 TREES PROVIDED (FOR ZION MARKER FRONTAGE)

LANDSCAPE LEGEND

- EXISTING OAK TREE
- EXISTING PINE TREE
- EXISTING CREPE TREE
- EXISTING PEAR TREE
- EXISTING BURFORD HOLLY
- NEW LANDSCAPE ISLAND ADDED
- NEW RED OAK TREE
- NEW SWEETGUM TREE
- NEW BOLD CYPRESS TREE

PLANT SCHEDULE

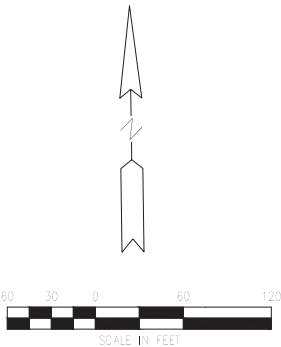
COMMON NAME	BOTANICAL NAME	QUANTITY	SIZE	SPACING	REMARKS
RED OAK	QUERCUS VIRGINIANA	12	3" CAL.	AS SHOWN	BALLED/BURLAP
BOLD CYPRESS	Toxodium distichum	10	3" CAL.	AS SHOWN	BALLED/BURLAP
SWEETGUM	Liquidambar styraciflua	14	3" CAL.	AS SHOWN	BALLED/BURLAP

THIS LANDSCAPE PLAN WILL ONLY COMPLY LEWISVILLE CODE OF ORDINANCE CHAPTER 17.5 - IH-35E CORRIDOR OVERLAY DISTRICT / SEC 17.5-4 - CORE SU-DISTRICT REGULATIONS (1) TREES AND PLANT MATERIALS PER DIRECTION OF THE CITY PLANNER

CONTRACTOR TO MODIFY THE EXISTING IRRIGATION SYSTEM



Know what's below.  
Call before you dig.



CAUTION !!!!

CALL TEXAS 811 & CITY OF LEWISVILLE 72 HOURS PRIOR TO START OF ANY CONSTRUCTION ACTIVITY.

IT IS CONTRACTOR'S RESPONSIBILITY TO PROTECT EXISTING UTILITIES AND OTHER CITY OR PUBLIC FACILITIES DURING CONSTRUCTION ACTIVITIES.

ZION MARKET  
2401 S. STIMMONS FREEWAY  
LEWISVILLE, TEXAS

LANDSCAPE PLAN

ISSUED FOR: DATE: BY:

JOB NO:  
DLA2001.02X

SHEET

L0.1

3015 Lone Star Circle, Suite 410  
Fort Worth, TX 76177  
www.wadeftrim.com



DESCRIPTION

DATE

REV#

BY