



FAÇADE DESIGN

LEWISVILLE, TX

PRESENTED BY

DL architecture+design

EXISTING PHOTO
Northeast Facade



PROPOSED DESIGN - PERSPECTIVE VIEW

Northeast Facade



PROPOSED DESIGN - AERIAL VIEW

Northeast Facade

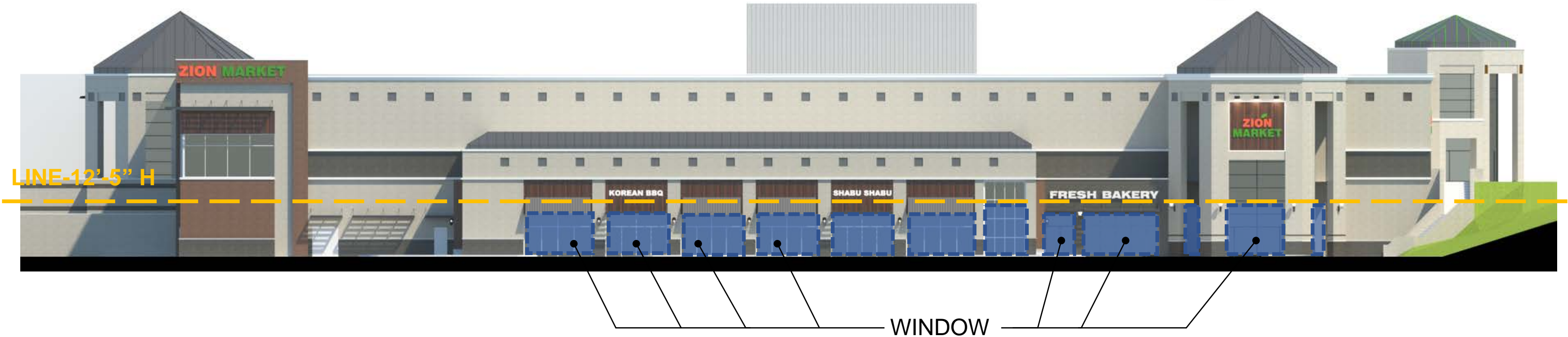
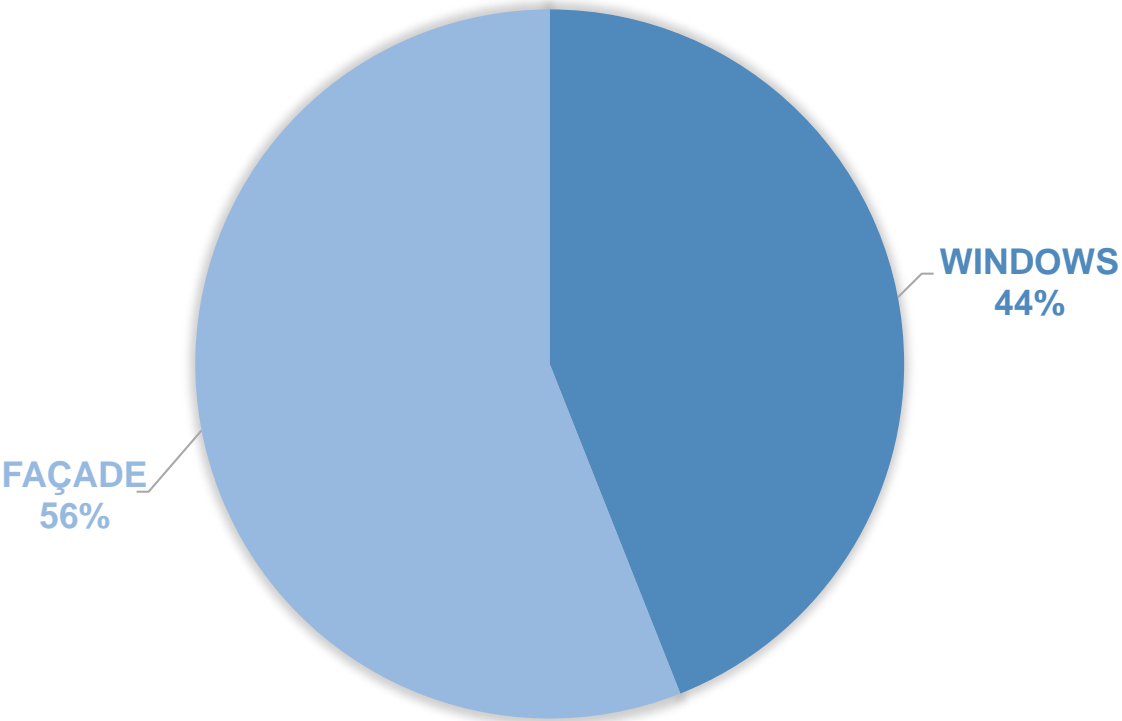


17.5-4.(c), (1), e, 1

WINDOWS [GROUND FLOOR] Northeast Facade:

WINDOWS ARE ADDED AS MUCH AS POSSIBLE TO WORK WITH INSIDE LAYOUT

TYPES	AREA (SQFT)	%
WINDOWS	1,549	44%
NON-WINDOW	1,972	56%
TOTAL	3,521	100%



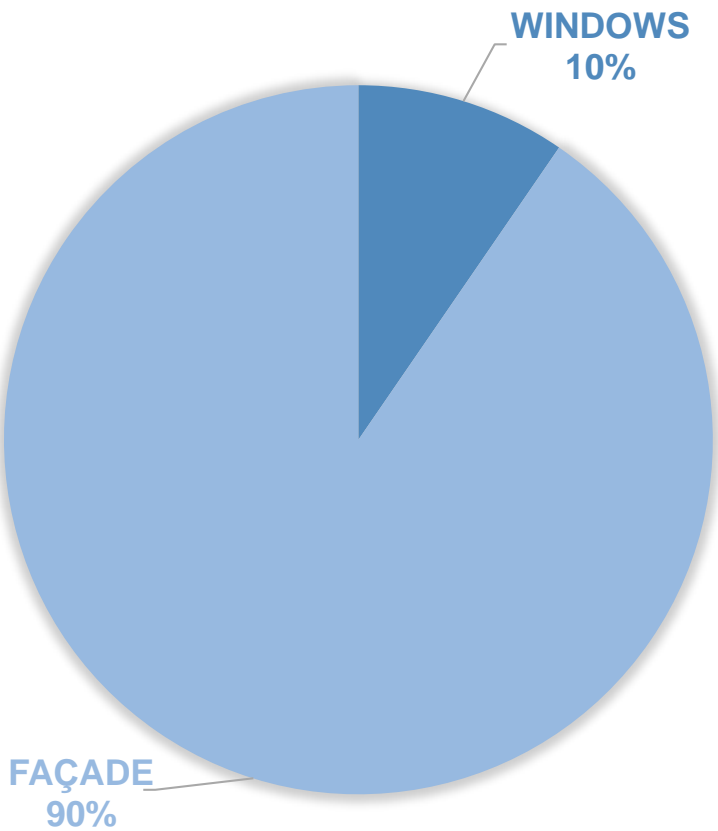
Alternative Standard Requiring Council Action

17.5-4.(c), (1), e, 3 a) To reduce the minimum required windows along the second floor from 25 percent to ten percent, a 60% decrease

WINDOWS [UPPER FLOOR] Northeast Facade:

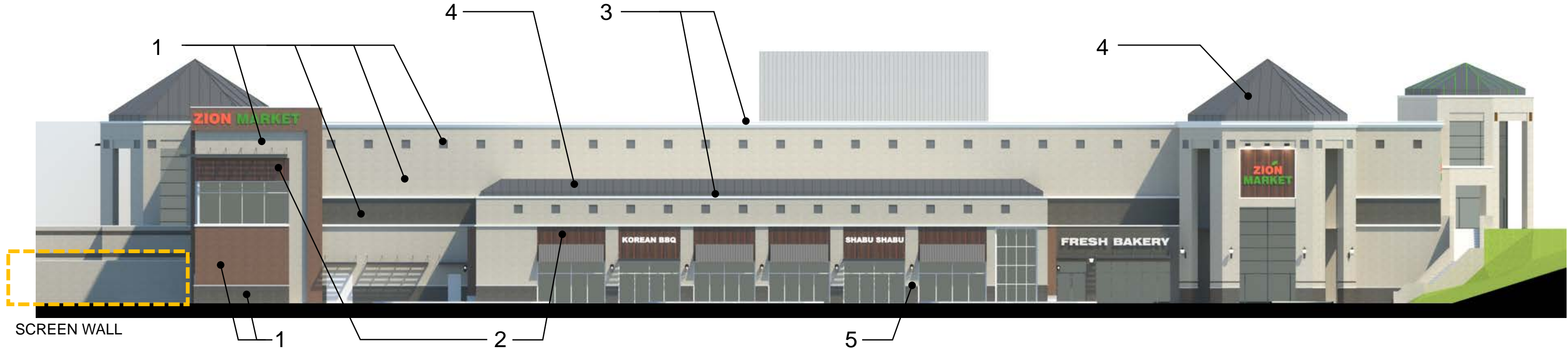
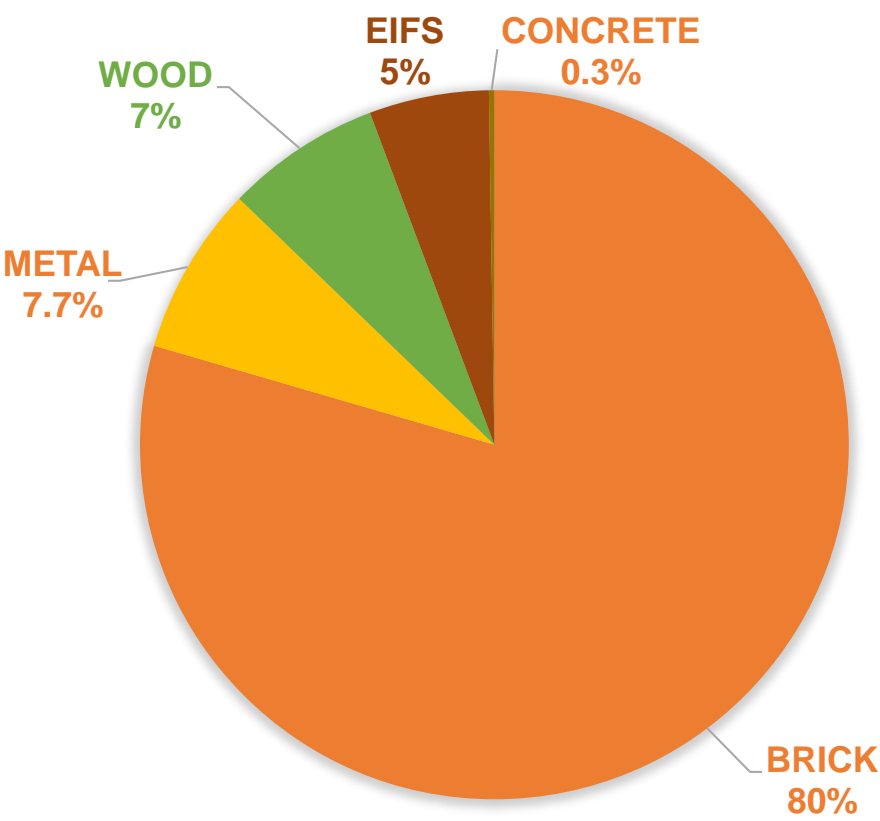
WINDOWS ARE ADDED AS MUCH AS POSSIBLE TO WORK WITH INSIDE LAYOUT

TYPES	AREA (SQFT)	%
WINDOWS	364	10%
NON WINDOW	3,226	90%
TOTAL	3,590	100%



17.5-4.(c), (3), a
FACADE MATERIALS Northeast Facade:

NO.	MATERIAL	AREA (SQFT)	%
1	BRICK	8,340	80%
2	WOOD	743	7%
3	EIFS	573	5%
4	METAL	808	7.7%
5	CONCRETE	26	0.3%
-	TOTAL	10,490	100%



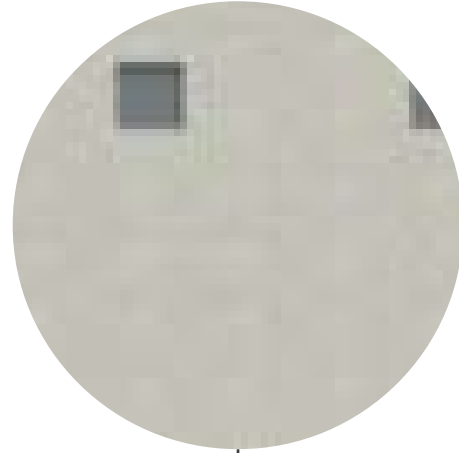
17.5-4.(c), (3), b

FACADE COLORS Northeast Facade:

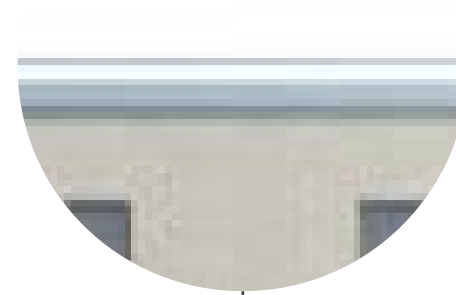
BROWN



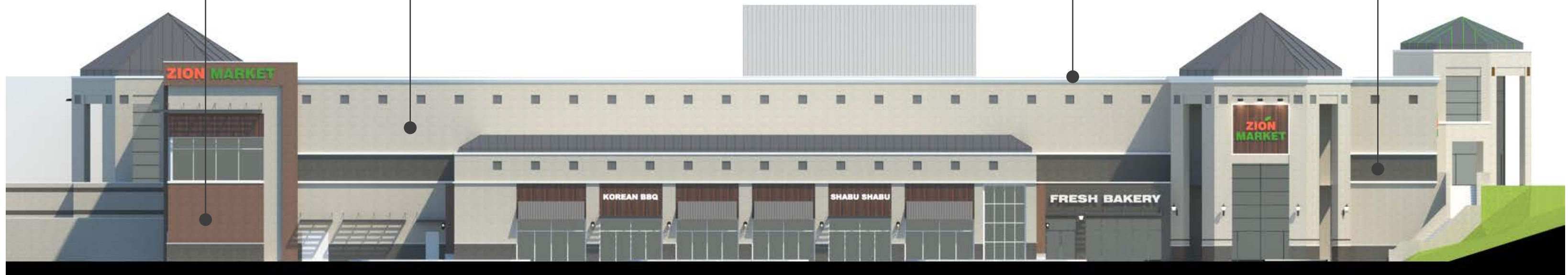
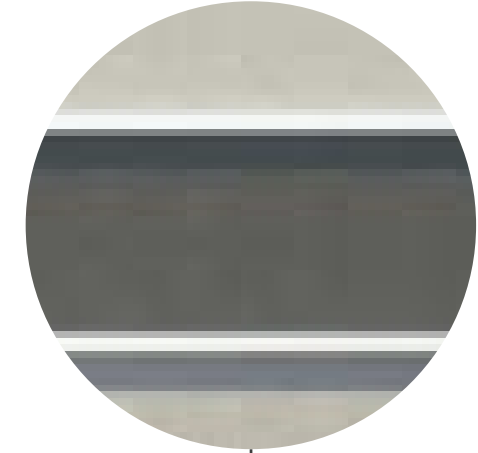
OFF-WHITE / CREAM



WHITE

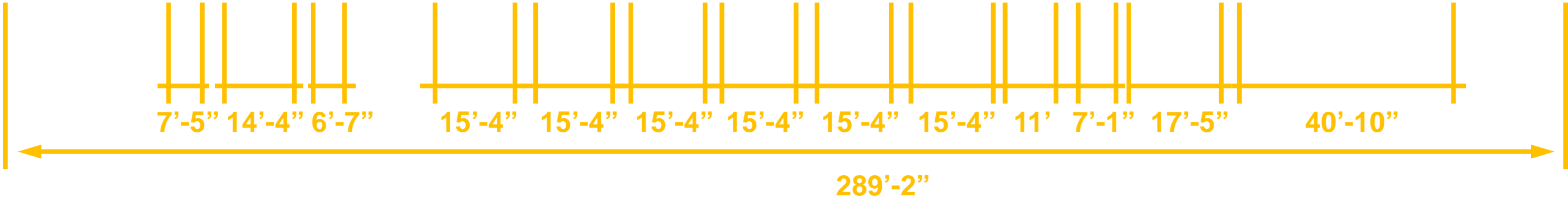
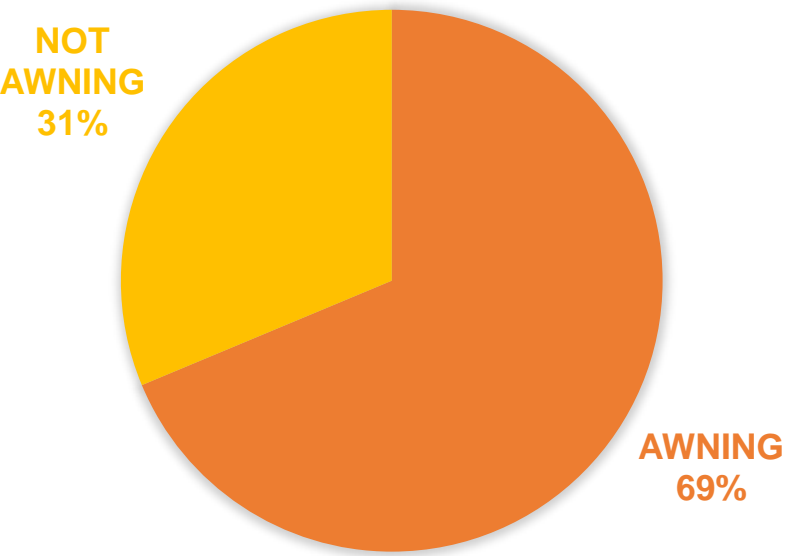


DARK GREY



17.5-4.(c), (4), a
AWNING & SIDEWALK Northeast Facade:

TYPES	LENGTH	%
AWNING	195'-11"	69%
TOTAL	289'-2"	100%



EXISTING PHOTO
Southeast facade



PROPOSED DESIGN - PERSPECTIVE VIEW

Southeast facade

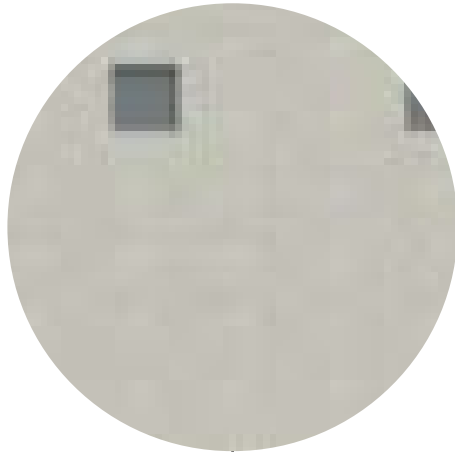


PROPOSED DESIGN - AERIAL VIEW
Southeast facade

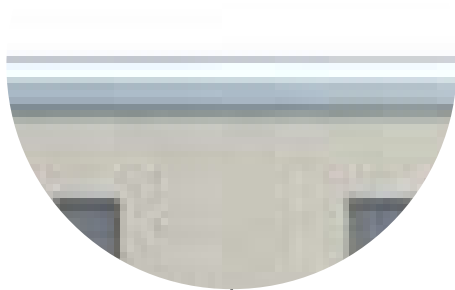


17.5-4.(c), (3), b
FACADE COLORS Southeast facade:

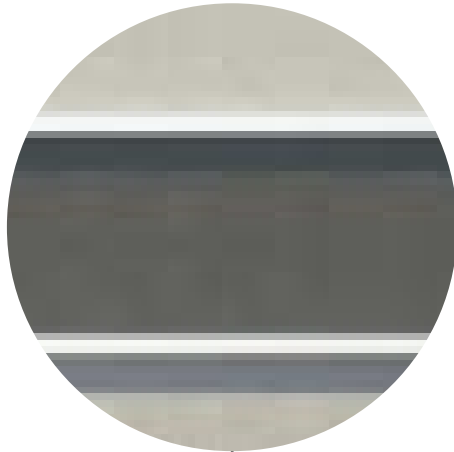
OFF-WHITE / CREAM



WHITE



DARK GREY



BROWN



17.5-4.(c), (4), a
AWNING & SIDEWALK Southeast facade:

TYPES	LENGTH	%
AWNING	184'-5"	69%
TOTAL	255'-7"	100%

