

## MEMORANDUM

**TO:** Donna Barron, City Manager

**FROM:** David Salmon, P.E., City Engineer

**VIA:** Eric Ferris, Assistant City Manager

**DATE:** August 19, 2019

**SUBJECT:** **Approval of an Amendment to the City Thoroughfare Plan to Change the Designation of a Segment of Railroad Street from Corporate Drive to SH 121 Business from a Residential Street to a Collector 2-Lane Undivided Roadway.**

### BACKGROUND

The City of Lewisville's Master Thoroughfare Plan currently indicates the segment of Railroad Street between SH 121 Business and Corporate Drive as a local street. However, this section of Railroad Street is a 37-foot wide roadway with 60-foot right-of-way that carries significant commercial truck traffic and serves as a collector street providing access to two major principal arterial roadways i.e. SH 121 Business and Corporate Drive. The abutting properties on the section of Railroad Street between SH 121 Business and Corporate Drive are commercial/industrial properties. The segments of Railroad Street to the north and south of this segment are classified as collector street (C2U- 60' ROW) and principal arterial street (P4D) respectively. Thus, staff recommends changing the designation of the segment of Railroad Street between SH 121 Business and Corporate Drive from a local/residential street to a Collector 2-lane divided (C2U) roadway.

### ANALYSIS

The City Thoroughfare Plan currently indicates the functional classification of Railroad Street between Main Street and Hebron Parkway as follows:

Railroad Street - from Main Street to SH 121 Business - Commercial 2-Lane Undivided (C2U)

Railroad Street - *from SH 121 Business to Corporate Drive - Residential/Local Street*

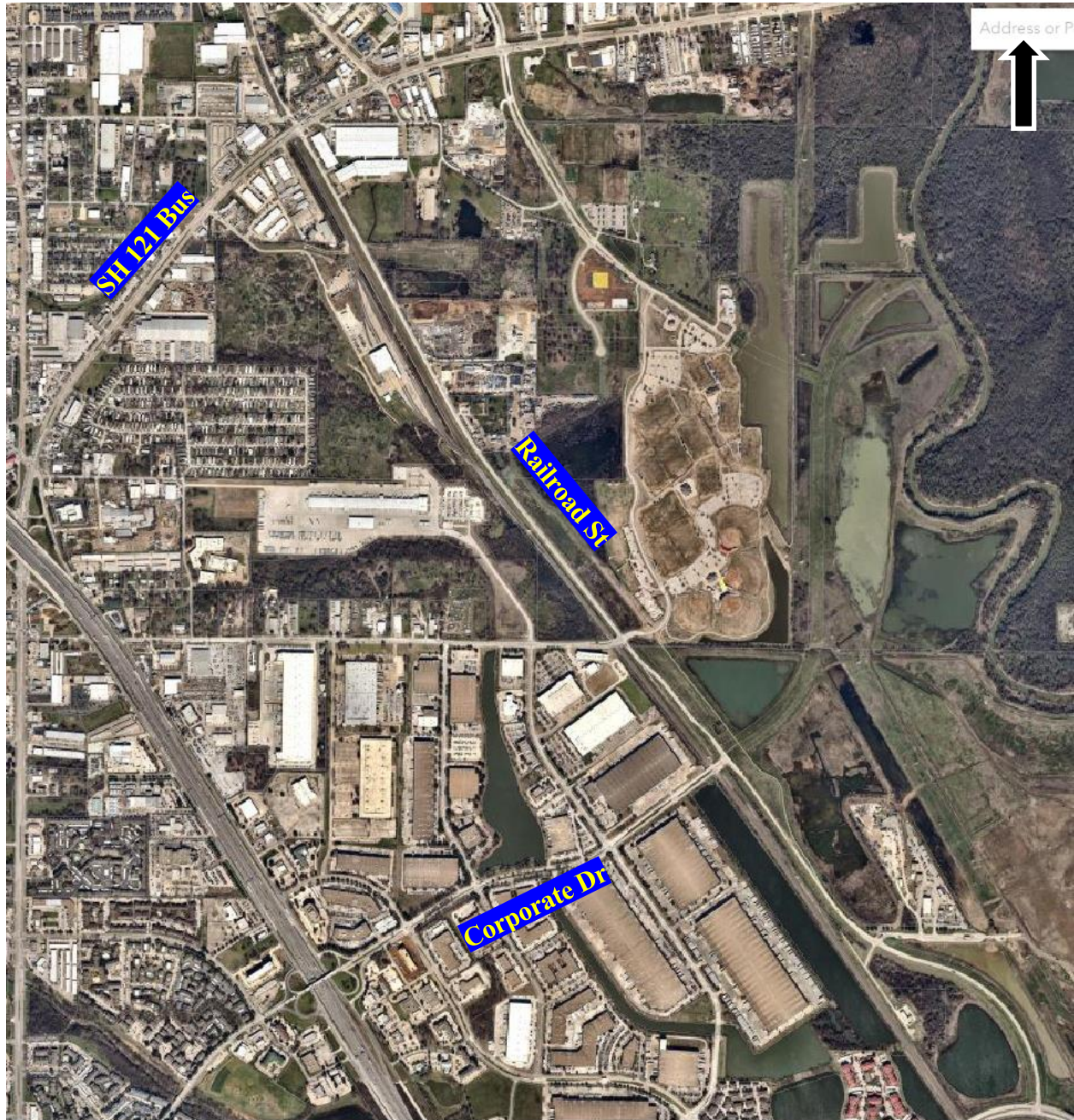
Railroad Street - from Corporate Drive to Hebron Pkwy - Principal 4-Lane Divided (P4D)

The segment of Railroad Street between SH 121 Business and Corporate Drive is classified as a local street. However, Railroad Street between SH 121 Business and Corporate Drive is a 37-foot wide, 60-foot ROW roadway. This section of Railroad Street serves the function of a collector street that connects to two major thoroughfares:

- SH 121 Business (a 6-lane divided state highway) at one end and
- Corporate Drive (a 4-lane divided principal arterial street) at the other end.

Also, the segment to the north of SH 121 Business is classified as a C2U roadway and the segment to the south of Corporate Drive is classified as a P4D roadway.

The aerial photo below shows that Railroad Street between SH 121 Business and Corporate Drive has commercial/industrial properties on both sides of street. There are no residential properties abutting Railroad St to justify the functional classification of a residential street/local street.



**Figure 1:** Aerial photo showing commercial properties only abutting Railroad Street between SH 121 Business and Corporate Drive

Staff recommends the designation of Railroad Street from SH 121 Business to Corporate Drive be changed from a residential/local street to a collector 2-lane undivided (C2U) roadway as it carries

Subject: Amend segment of Railroad St Designation on Thoroughfare Plan

August 19, 2019

Page 3 of 3

significant commercial truck traffic and connects two major roadways, which under full built-out condition will be two of the three major east-west corridors running through Lewisville.

The Transportation Board considered this item at the June 18, 2019, meeting and voted five to zero in favor of recommending the amendment to the Thoroughfare Plan to change the designation of the segment of Railroad Street from Corporate Drive to SH 121 Business from a local/residential street to a C2U roadway with 60-foot ROW.

### **RECOMMENDATION**

It is City staff's recommendation that the City Council approve the amendment as set forth in the caption above.