

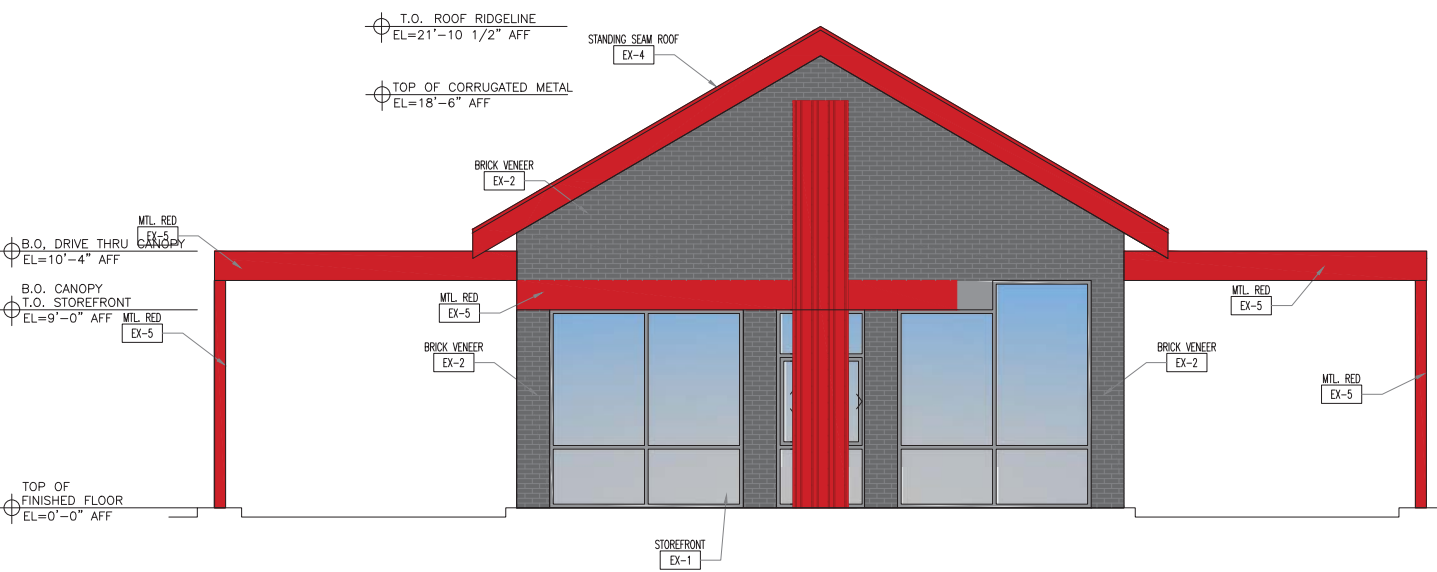
EXTERIOR FINISH TABLE (WEST):
TOTAL SQUARE FOOTAGE: 343.75 SF
(EXCLUDES METAL ROOF, AWNING, SIGN PILASTER)
MASONRY/BRICK=129.75 SF - 129.75/343.75 = 38%
GLASS STOREFRONT=111.8 SF - 211.8/343.75 = 62%

EXTERIOR MATERIALS SCHEDULE:
EX-1 CLEAR ANODIZED ALUMINUM STOREFRONT WITH INSULATED GLAZING
EX-2 MODULAR BRICK, ACME SMOOTH TEXTURE SLATE GRAY, PEP167 ITEM 106905
EX-3 CORRUGATED METAL SIDING, RED FINISH
EX-4 PRE-FINISHED STANDING SEAM METAL ROOF, RED FINISH
EX-5 PRE-FINISHED BRAKE METAL, RED FINISH
EX-6 6" DIAMETER ILLUMINATED SIGNAGE
EX-7 18" ILLUMINATED CHANNEL LETTERING

EXTERIOR FINISH TABLE (NORTH):
TOTAL SQUARE FOOTAGE: 319 SF
(EXCLUDES GABLE, ROOF, AWNING, SIGN PILASTER)
MASONRY: BRICK=107.4 SF - 107.4/319 = 31%
GLASS STOREFRONT: 200 SF - 200/319 = 63%



02 WEST ELEVATION
SCALE: 1/4" = 1'-0"

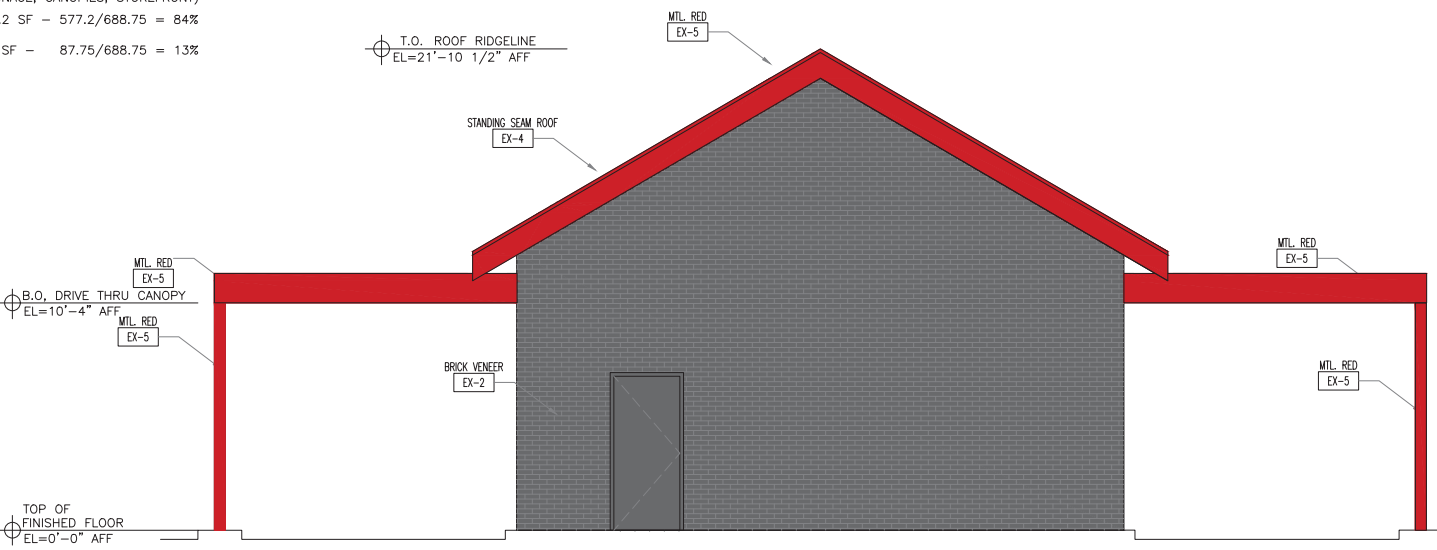


01 NORTH ELEVATION
(FACING MAIN STREET)
SCALE: 1/4" = 1'-0"



04 EAST ELEVATION
SCALE: 1/4" = 1'-0"

EXTERIOR FINISH TABLE (EAST, SOUTH ELEV):
TOTAL SQUARE FOOTAGE: 688.75
(EXCLUDES EAVES, SIGNAGE, CANOPIES, STOREFRONT)
MASONRY: BRICK=577.2 SF - 577.2/688.75 = 84%
STOREFRONT: 87.75 SF - 87.75/688.75 = 13%



03 SOUTH ELEVATION
SCALE: 1/4" = 1'-0"

151 COFFEE
AT VALLEY SQUARE
LOT 7, BLOCK A
LEWISVILLE, TEXAS



RICHMOND GROUP
architecture & planning
12200 STEMMONS FREEWAY, STE. 317, DALLAS, TEXAS 75234
PHONE: 972.484.5977 - FAX: 972.484.8641 - RG@RG-ARCH.COM

All drawings and written material herein constitute the original and unpublished work of the Architect, and the same may not be duplicated, used or disclosed without the written consent of the Architect.

08/30/2019
REVISION
PROJECT NUMBER
2838
DATE
08/30/2019
SHEET
EXTERIOR ELEVATIONS
A-200
DWG FILE
PLOT SCALE